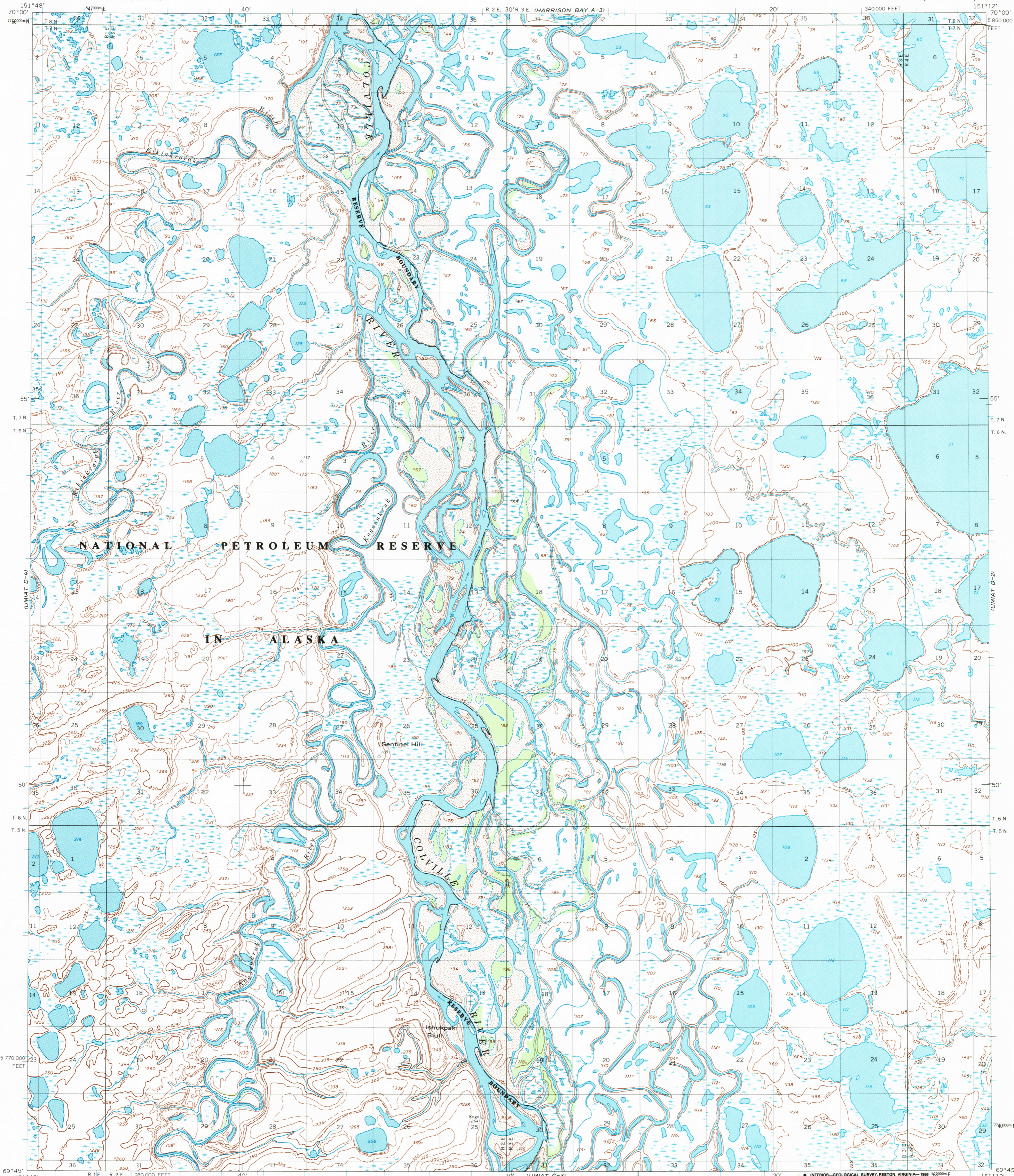


HARRISON BAY A-3

HARRISON BAY A-2

UNITED STATES
DEPARTMENT OF THE INTERIOR
GEOLOGICAL SURVEY

UMIAT (D-3) QUADRANGLE
ALASKA-NORTH SLOPE BOROUGH
1:63 360 SERIES (TOPOGRAPHIC)



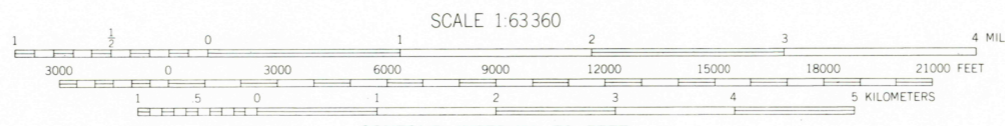
NATIONAL PETROLEUM RESERVE
IN ALASKA

Sentinel Hill

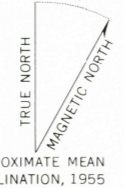
COLVILLE RIVER

Ishukpak Bluff

Map by the Defense Mapping Agency
Edited and published by the Geological Survey
Control by NOS/NOAA and USCE
Topography by photogrammetric methods from aerial photographs taken 1955, field annotated 1955. Map not field checked
Projection and 1000-meter grid ticks shown in blue:
Universal Transverse Mercator, zone 5
10,000-foot grid ticks based on Alaska coordinate system, zone 4, 1927 North American Datum
To place on the predicted North American Datum 1983 move the projection lines 42 meters north and 121 meters east
Land lines represent unsurveyed and unmarked locations predetermined by the Bureau of Land Management
Folio U-3, Umiat Meridian
Swamps, as portrayed, indicate only the wetter areas, usually of low relief, as interpreted from aerial photographs
There may be private inholdings within the boundaries of the National or State reservations shown on this map



SCALE 1:63360
CONTOUR INTERVAL 50 FEET
DASHED LINES REPRESENT 25-FOOT CONTOURS
NATIONAL GEODETIC VERTICAL DATUM OF 1929



APPROXIMATE MEAN DECLINATION, 1955



QUADRANGLE LOCATION

ROAD CLASSIFICATION
No roads or trails in this area

FOR SALE BY U. S. GEOLOGICAL SURVEY
FAIRBANKS, ALASKA 99701, DENVER, COLORADO 80225, OR RESTON, VIRGINIA 22092
A FOLDER DESCRIBING TOPOGRAPHIC MAPS AND SYMBOLS IS AVAILABLE ON REQUEST

UMIAT (D-3), ALASKA
N6945-W15112/15X36
1955
MINOR REVISION 1985

(UMIAT C-2)

(UMIAT C-3)

(UMIAT C-4)

(UMIAT C-5)

(UMIAT C-6)

(UMIAT C-7)

(UMIAT C-8)

RETURN TO:
USGS AND HISTORICAL MAP ARCHIVES