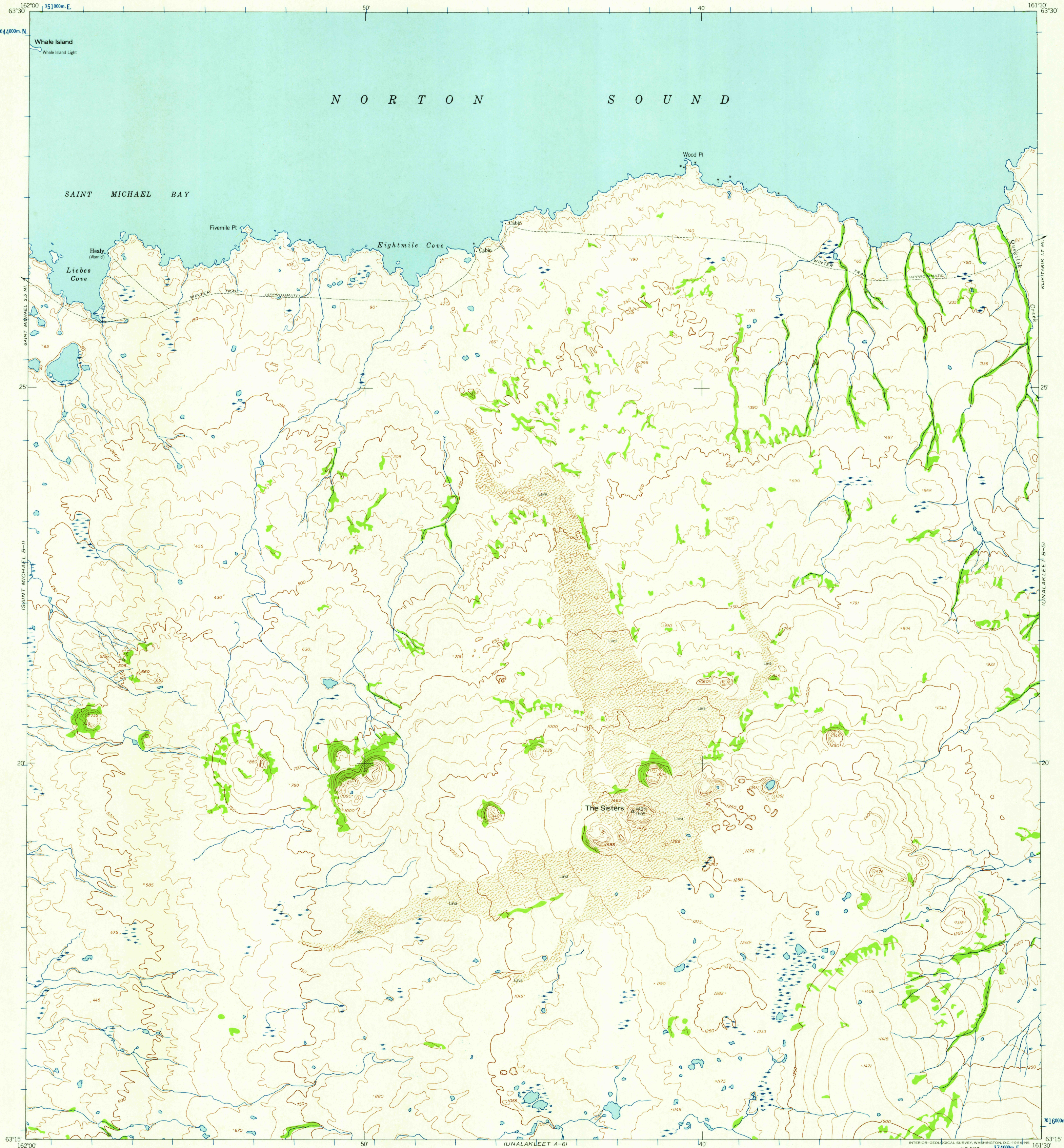
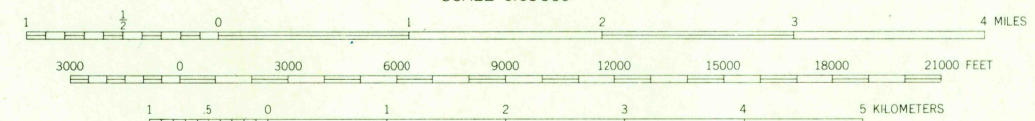
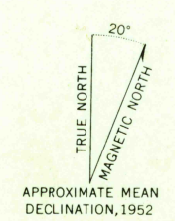


N O R T O N S O U N D



Mapped by the Army Map Service
Published for civil use by the Geological Survey
Control by USCGS and USCE
Topography from aerial photographs by photogrammetric methods
Aerial photographs taken 1951-1952. Photography field annotated 1952
Universal Transverse Mercator projection
1927 North American datum
1000 meter Universal Transverse Mercator grid ticks,
zone 4, shown in blue
Unchecked elevations are shown in brown



CONTOUR INTERVAL 50 FEET
DASHED LINES REPRESENT 25 FOOT CONTOURS
DATUM IS MEAN SEA LEVEL
SHORELINE SHOWN REPRESENTS THE APPROXIMATE LINE OF MEAN HIGH WATER
THE MEAN RANGE OF TIDE IS APPROXIMATELY 4 FEET

USCS
Historical File
Topographic Division



U.S.G.S.
FILE COPY
TOPOGRAPHIC DIVISION

ROAD CLASSIFICATION
Trails

UNALAKLEET (B-6), ALASKA
N6315—W16130/15X30

1952

FOR SALE BY U.S. GEOLOGICAL SURVEY
FAIRBANKS, ALASKA DENVER 2, COLORADO WASHINGTON 25, D.C.
A FOLDER DESCRIBING TOPOGRAPHIC MAPS AND SYMBOLS IS AVAILABLE ON REQUEST

MAR 25 1959

1845