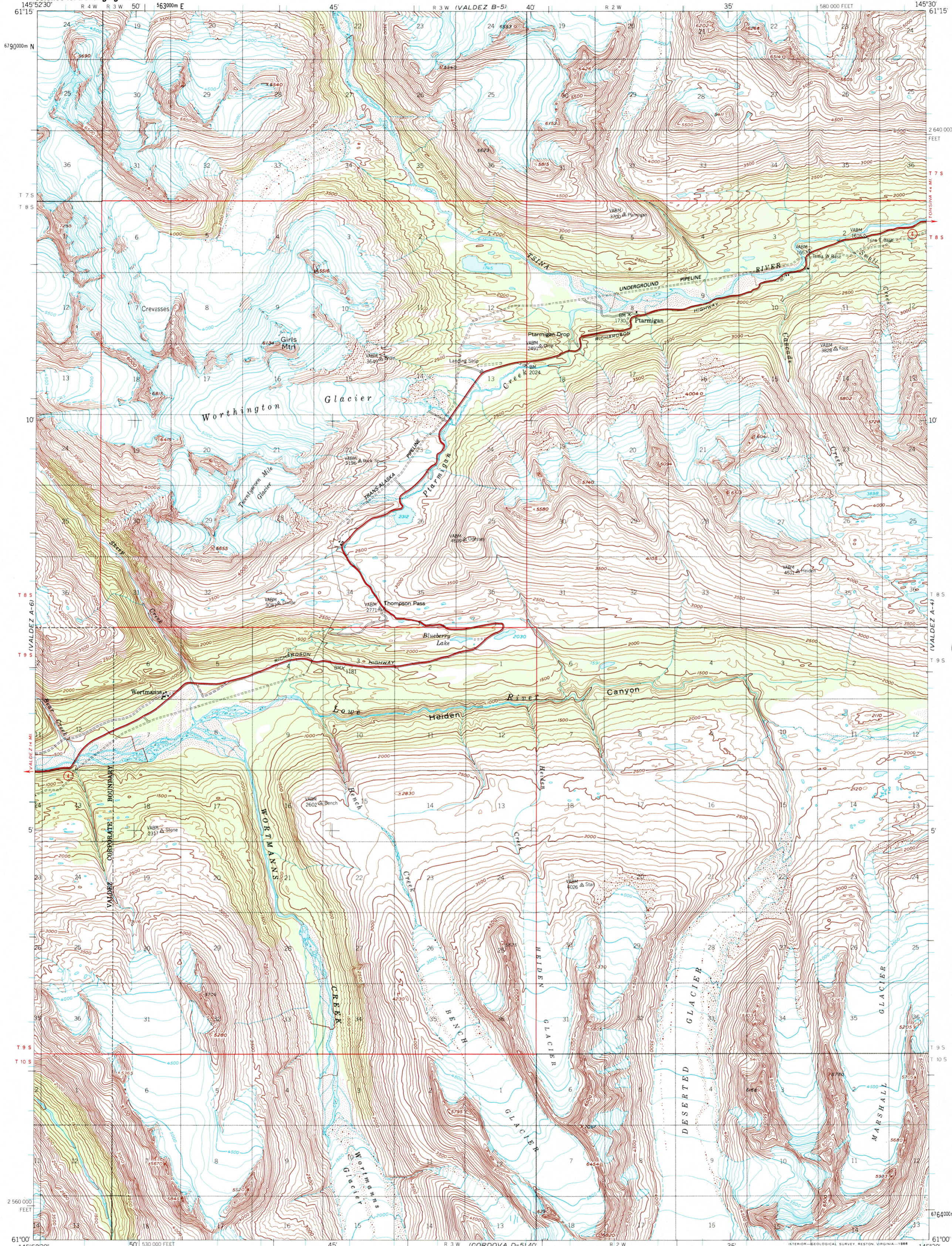


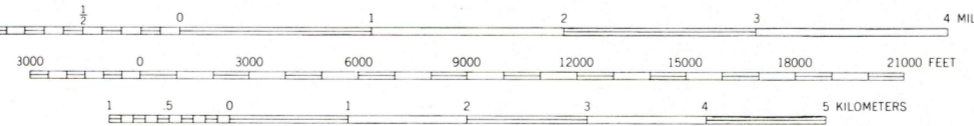
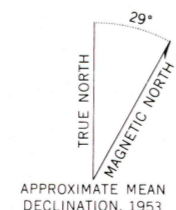


U.S. DEPARTMENT OF THE INTERIOR
U.S. GEOLOGICAL SURVEY

VALDEZ (A-5) QUADRANGLE
ALASKA
1:63 360 SERIES (TOPOGRAPHIC)



Mapped, edited, and published by the Geological Survey
Control by USGS and NOS/NOAA
Topography by photogrammetric methods from aerial photographs taken 1950, field annotated 1953. Map not field checked
Projection and 1000-meter grid ticks shown in blue:
Universal Transverse Mercator, zone 6
10,000-foot grid ticks based on Alaska coordinate system, zone 3, 1927 North American Datum
To place on the predicted North American Datum 1983 move the projection lines 59 meters north and 112 meters east
Gray land lines represent unsurveyed and unmarked locations determined by the Bureau of Land Management
Folio CR-5, Cooper River Meridian



FOR SALE BY U.S. GEOLOGICAL SURVEY, P.O. BOX 25286, DENVER, COLORADO 80225
A FOLDER DESCRIBING TOPOGRAPHIC MAPS AND SYMBOLS IS AVAILABLE ON REQUEST

VALDEZ (A-5), ALASKA
61145-A5-TF-063
1953
MINOR REVISION 1983



U.S. GEOLOGICAL SURVEY LIBRARY
JAN 28 2002
RESTON, VA

