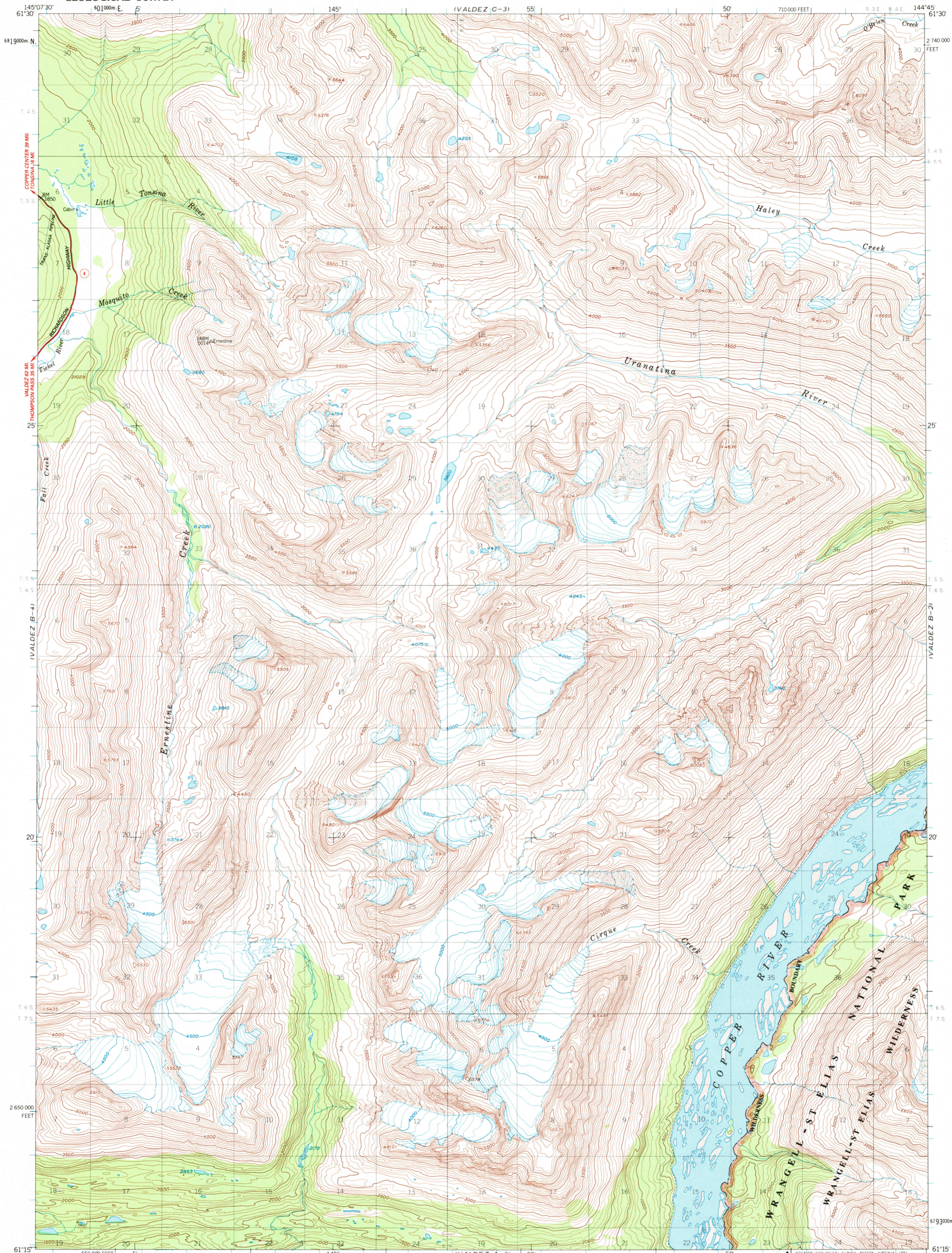
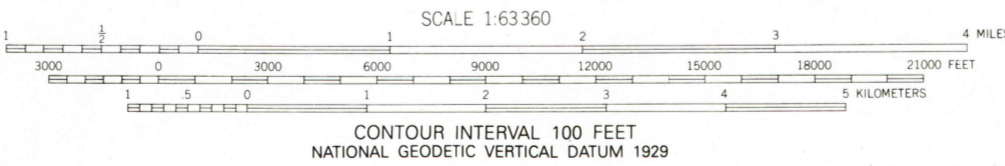
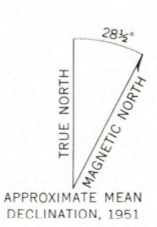


UNITED STATES
DEPARTMENT OF THE INTERIOR
GEOLOGICAL SURVEY

VALDEZ (B-3) QUADRANGLE
ALASKA
1:63 360 SERIES (TOPOGRAPHIC)



Produced by the United States Geological Survey
Control by USGS and NOS/NOAA
Compiled from aerial photographs taken 1950 and 1957,
field annotated 1951. Map not field checked
North American Datum of 1927 (NAD 27). Projection and
10,000-foot grid ticks: Alaska coordinate system, zone 3 (transverse Mercator)
1000-meter Universal Transverse Mercator grid ticks, zone 6,
shown in blue
The difference between 1927 North American Datum and North
American Datum of 1983 (NAD 83) for 7.5 minute intersections
is given in USGS Bulletin 1875
Land lines represent unsurveyed and unmarked locations
predetermined by the Bureau of Land Management
Folio CR-8, Copper River Meridian
Federal reservation boundaries established by the Alaska National
Interest Lands Conservation Act, PL96-487, Dec. 2, 1980, are
shown as compiled by the administering agencies
There may be private inholdings within the boundaries of
the National or State reservations shown on this map



CONTOUR INTERVAL 100 FEET
NATIONAL GEODETIC VERTICAL DATUM 1929
FOR SALE BY U. S. GEOLOGICAL SURVEY
FAIRBANKS, ALASKA 99701, DENVER, COLORADO 80225, OR RESTON, VIRGINIA 22092
A FOLDER DESCRIBING TOPOGRAPHIC MAPS AND SYMBOLS IS AVAILABLE ON REQUEST



ROAD CLASSIFICATION
Heavy-duty
State Route

VALDEZ (B-3), ALASKA
61144C7-TF-063
1951
MINOR REVISION 1966

USGS AND HISTORICAL MAP ARCHIVES