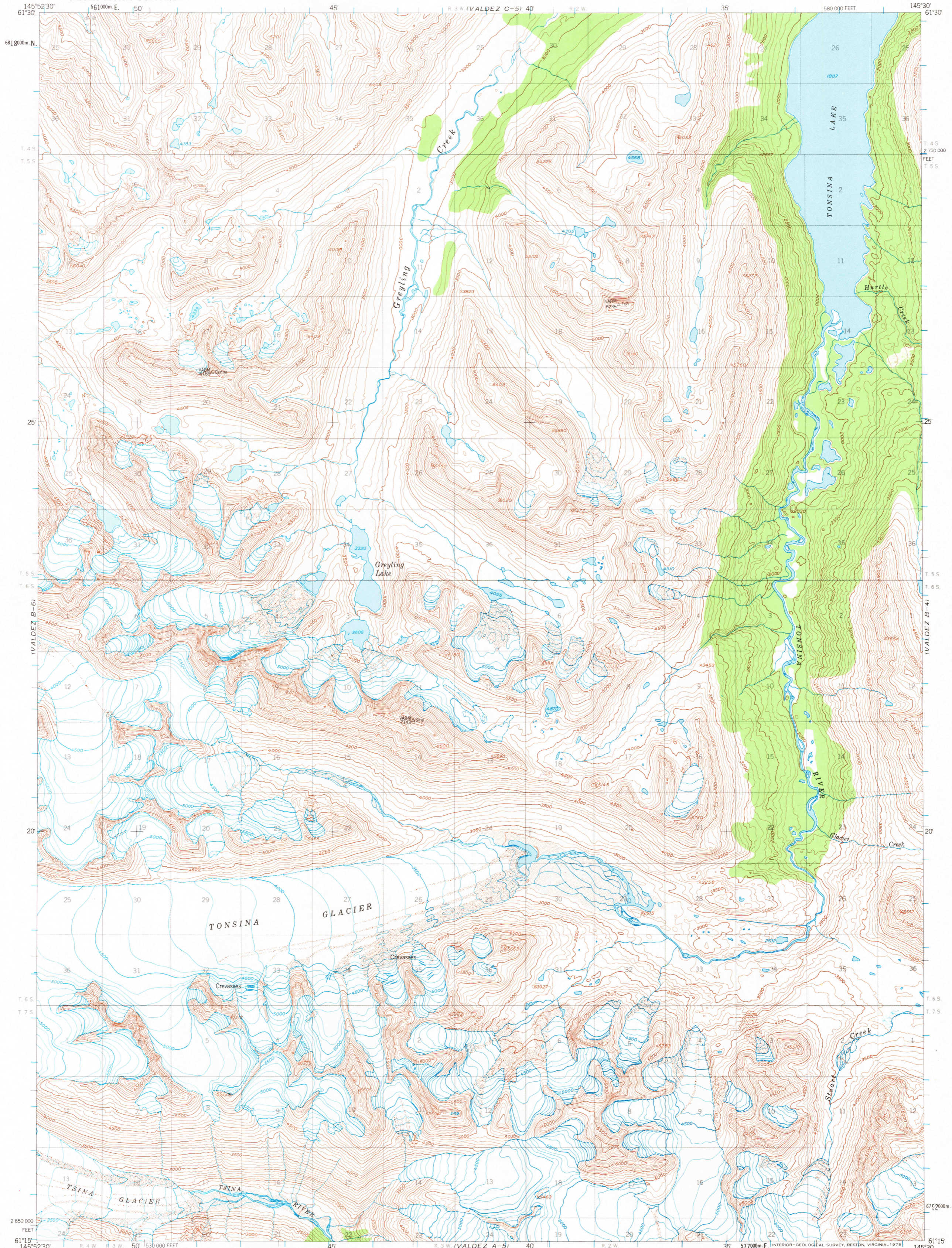


IVALDEZ C-6)

UNITED STATES
DEPARTMENT OF THE INTERIOR
GEOLOGICAL SURVEY

VALDEZ (B-5) QUADRANGLE
ALASKA
1:63 360 SERIES (TOPOGRAPHIC)

IVALDEZ C-4)



IVALDEZ A-6)

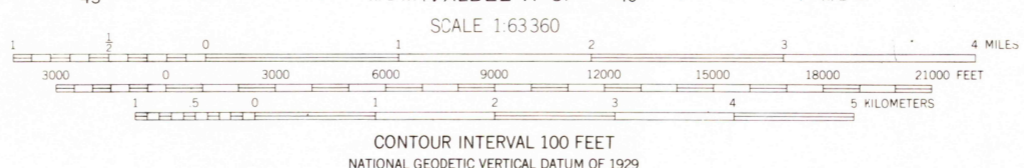
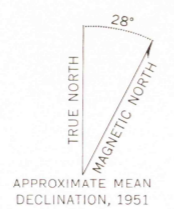
Mapped, edited, and published by the Geological Survey
Control by USGS

Topography by photogrammetric methods from aerial photographs taken 1950 and 1957, field annotated 1951. Map not field checked

Universal Transverse Mercator projection; 1927 North American datum
10,000-foot grid based on Alaska coordinate system, zone 3
1000-meter Universal Transverse Mercator grid ticks, zone 6, shown in blue

Land lines represent unsurveyed and unmarked locations predetermined by the Bureau of Land Management
Folio CR-5, Copper River Meridian

Swamps, as portrayed, indicate only the wetter areas, usually of low relief, as interpreted from aerial photographs



ROAD CLASSIFICATION
No roads or trails in this area

FOR SALE BY U. S. GEOLOGICAL SURVEY
FAIRBANKS, ALASKA 99701, DENVER, COLORADO 80225, OR RESTON, VIRGINIA 22092
A FOLDER DESCRIBING TOPOGRAPHIC MAPS AND SYMBOLS IS AVAILABLE ON REQUEST

VALDEZ (B-5), ALASKA
N6115-W14530/15X22.5
1951
MINOR REVISIONS 1973

USGS WMD HISTORICAL MAP ARCHIVES