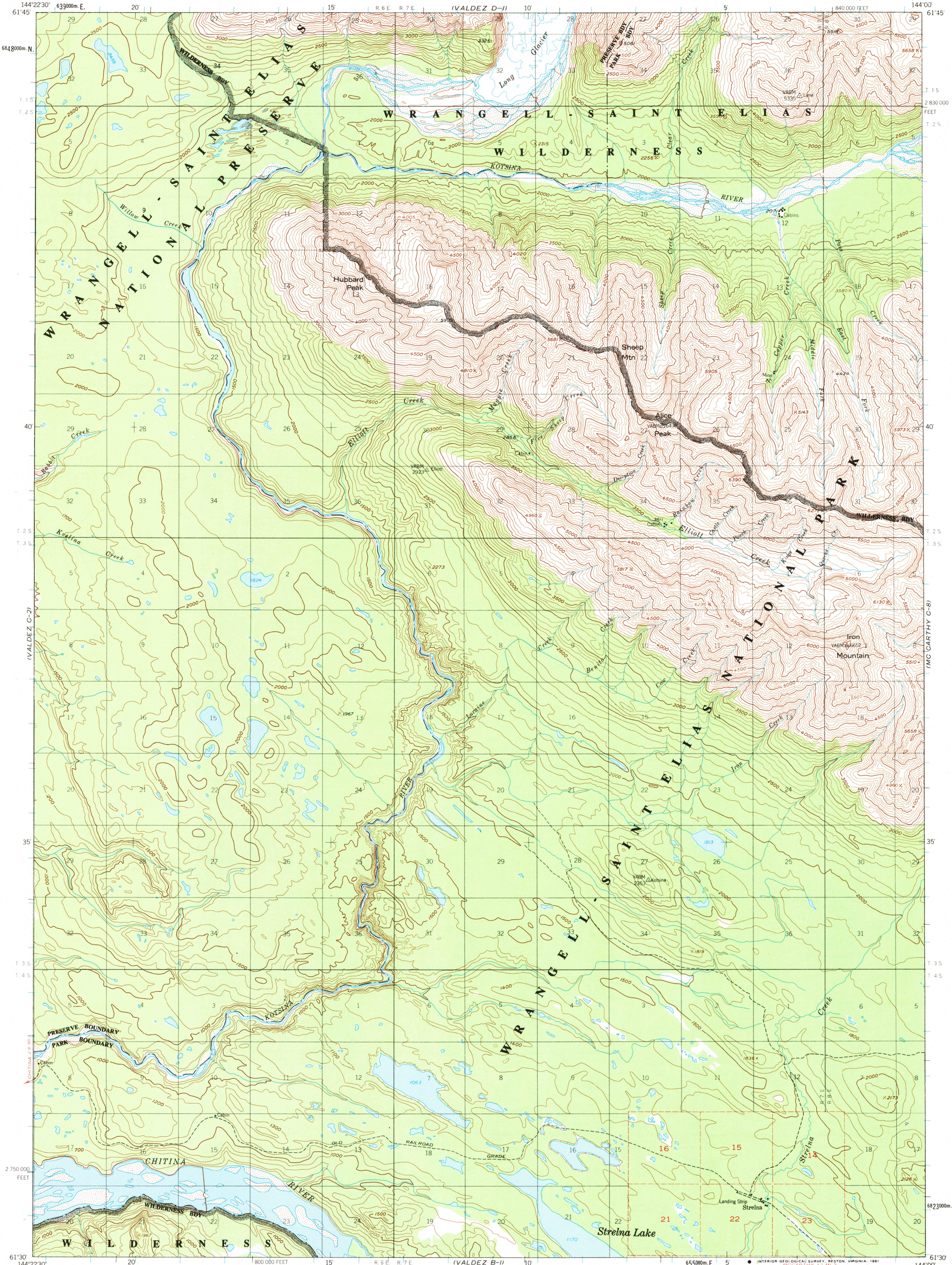


IVALDEZ D-2

UNITED STATES
DEPARTMENT OF THE INTERIOR
GEOLOGICAL SURVEY

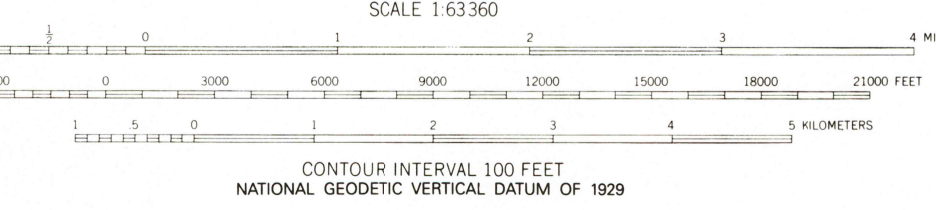
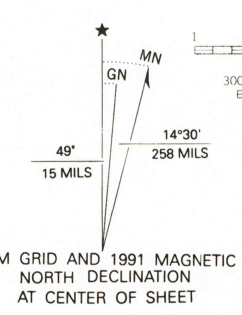
VALDEZ (C-1) QUADRANGLE
ALASKA
1:63 360 SERIES (TOPOGRAPHIC)

IVALDEZ D-8



IVALDEZ B-2

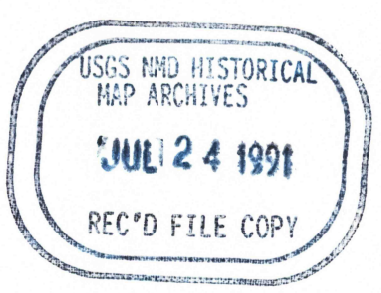
Mapped by the Defense Mapping Agency
 Edited and published by the Geological Survey
 Control by USGS and NOS/NOAA
 Topography by photogrammetric methods from aerial photographs
 taken 1950, field annotated 1951
 Projection and 1000-meter grid ticks shown in blue:
 Universal Transverse Mercator, zone 6
 10,000-foot grid ticks based on Alaska coordinate
 system, zone 3, 1927 North American Datum
 The difference between 1927 North American Datum and North
 American Datum of 1983 (NAD 83) for 7.5 minute intersections
 is given in USGS Bulletin 1875
 Gray land lines represent unsurveyed and unmarked locations
 predetermined by the Bureau of Land Management
 Folios CR-6, Cooper River Meridian
 Federal reservation boundaries established by The Alaska National
 Interest Lands Conservation Act, PL 96-487, Dec. 2, 1980, are
 shown as compiled by the administering agencies
 There may be private inholdings within the boundaries of
 the National or State reservations shown on this map



ROAD CLASSIFICATION
 Trails

FOR SALE BY U. S. GEOLOGICAL SURVEY
 FAIRBANKS, ALASKA 99701, DENVER, COLORADO 80226, OR RESTON, VIRGINIA 22092
 A FOLDER DESCRIBING TOPOGRAPHIC MAPS AND SYMBOLS IS AVAILABLE ON REQUEST

VALDEZ (C-1), ALASKA
 61144-E1-TF-063
 1951
 MINOR REVISIONS 1991



IVALDEZ B-8