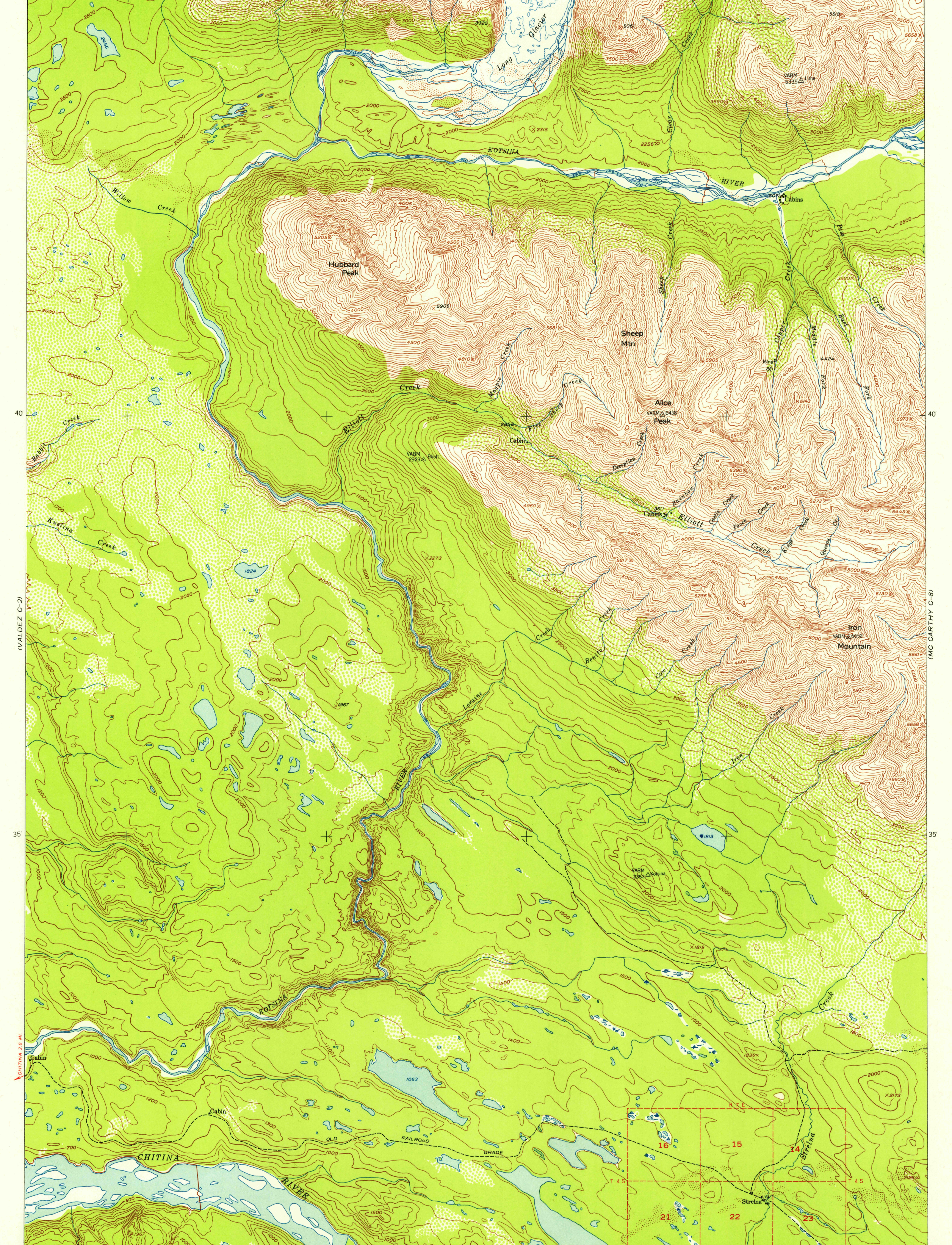
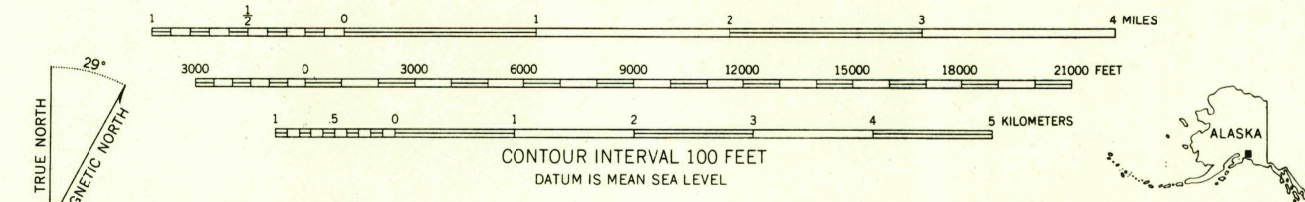


144°22'30" 20 15 10 5 144°00' 61°45'



61°30' 144°22'30" 20 15 10 5 144°00' 61°30' (VALDEZ B-1) SCALE 1:63360 INTERIOR GEOLOGICAL SURVEY, WASHINGTON, D. C. 1954 NS M R 5123 MCGARTHY 42 MI R 7 E (MCGARTHY C-8)

Maped, edited, and published by the Geological Survey  
Control by USGS and USC&GS  
Topography from aerial photographs by multiplex methods 1953  
Aerial photographs taken 1950  
Universal Transverse Mercator projection, zone 6  
1927 North American datum  
Dashed land lines indicate approximate locations  
Unchecked elevations are shown in brown and blue



ROAD CLASSIFICATION

ALL WEATHER ROADS	DRY WEATHER ROADS
Hard-surface.....None	Improved dirt.....None
Other.....None	Unimproved dirt.....None
Trails.....	

FOR SALE BY U.S. GEOLOGICAL SURVEY  
FAIRBANKS, ALASKA FEDERAL CENTER, DENVER, COLORADO WASHINGTON 25, D. C.  
A FOLDER DESCRIBING TOPOGRAPHIC MAPS AND SYMBOLS IS AVAILABLE ON REQUEST

USGS VALDEZ (C-1), ALASKA  
Historical File N6130-W14400/15X22.5  
Topograph ion 1953

NOV 26 1954