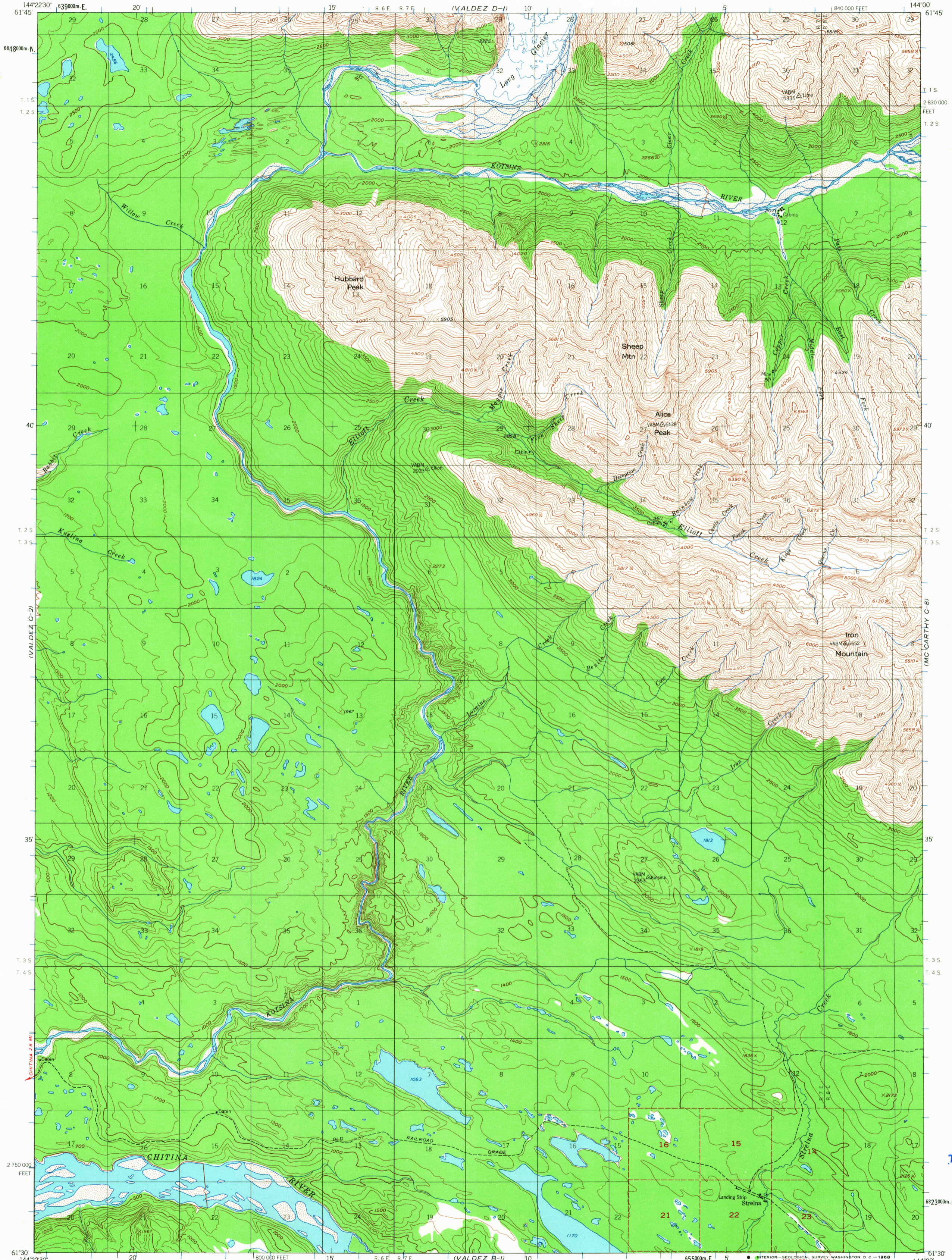


(VALDEZ D-2)

UNITED STATES
DEPARTMENT OF THE INTERIOR
GEOLOGICAL SURVEY

VALDEZ (C-1) QUADRANGLE
ALASKA
1:63 360 SERIES (TOPOGRAPHIC)

(MCCARTHY D-8)



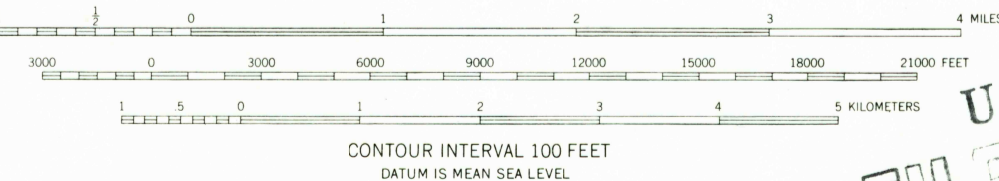
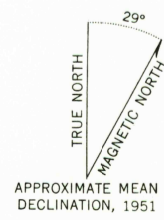
(VALDEZ B-2)

Mapped, edited, and published by the Geological Survey
Control by USGS and USC&GS

Topography by photogrammetric methods from aerial photographs taken 1950, field annotated 1951. Map not field checked

Universal Transverse Mercator projection, 1927 North American datum
10,000 foot grid based on Alaska coordinate system, zone 3
1000-meter Universal Transverse Mercator grid ticks, zone 6, shown in blue

Land lines printed in gray represent unsurveyed and unmarked locations predetermined by the Bureau of Land Management. Folio CR-6, Copper River Meridian



U.S.G.S.
FILE COPY
TOPOGRAPHIC DIVISION

ROAD CLASSIFICATION

Trails

FOR SALE BY U.S. GEOLOGICAL SURVEY
FAIRBANKS, ALASKA 99701, DENVER, COLORADO 80225, OR WASHINGTON, D. C. 20242
A FOLDER DESCRIBING TOPOGRAPHIC MAPS AND SYMBOLS IS AVAILABLE ON REQUEST

VALDEZ (C-1), ALASKA
N6130-W14400/1522.5

1951
MINOR REVISIONS 1967

USGS
Historical File
Topographic Division

4145
APR 10 1968

(MCCARTHY B-8)