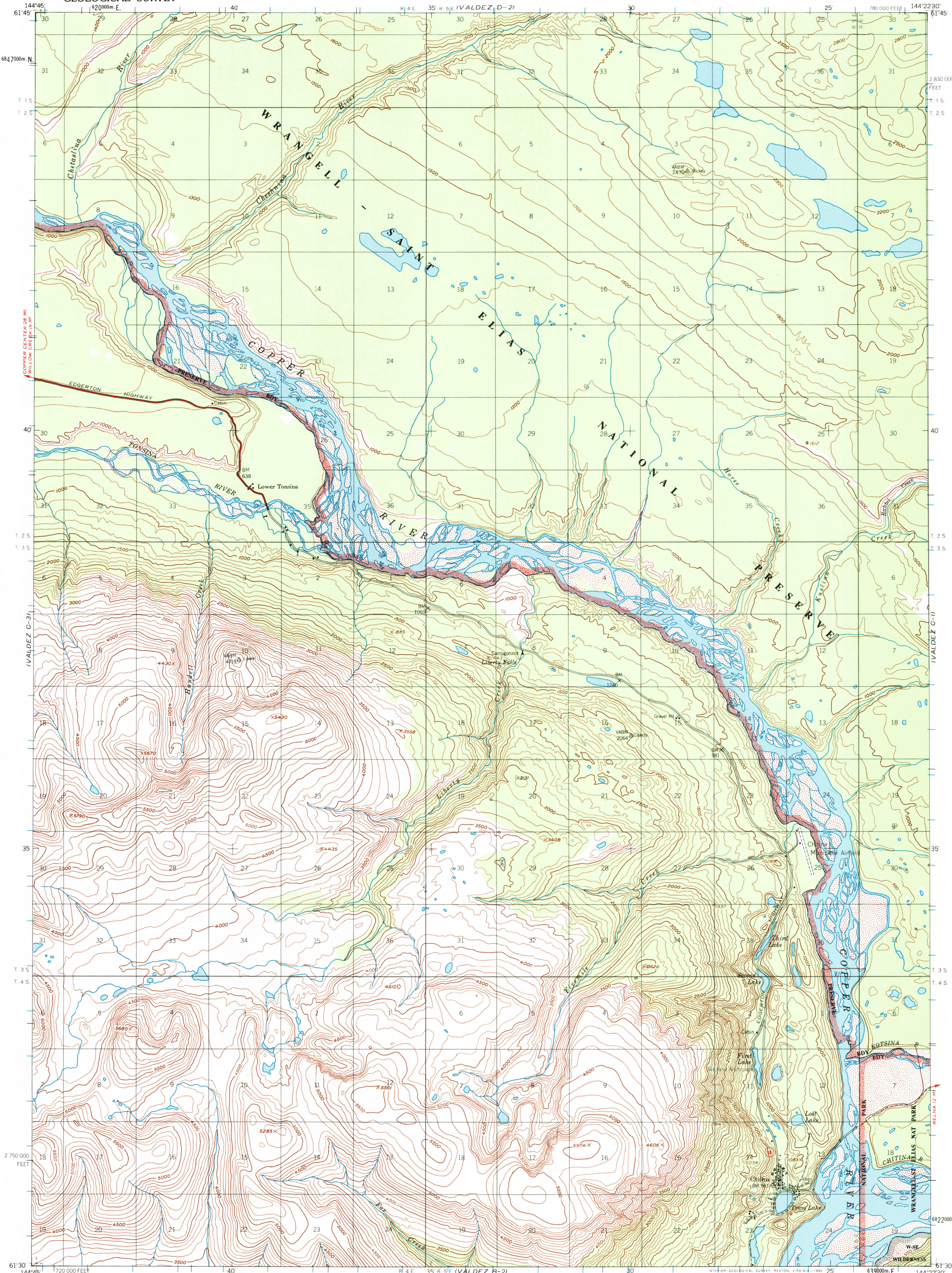
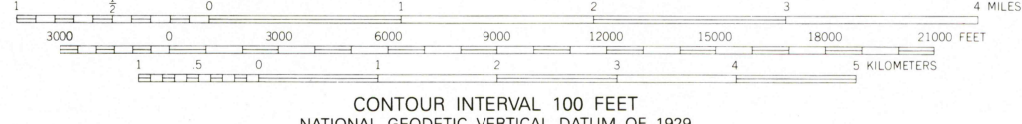
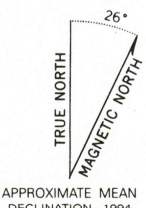


UNITED STATES  
DEPARTMENT OF THE INTERIOR  
GEOLOGICAL SURVEY

VALDEZ (C-2) QUADRANGLE  
ALASKA  
1:63 360 SERIES (TOPOGRAPHIC)



Produced by the United States Geological Survey  
Control by USGS and NOS/NOAA  
Compiled from aerial photographs taken 1950,  
field annotated 1951. Map not field checked.  
North American Datum of 1927 (NAD 27). Projection and  
10000-foot ticks: Alaska Coordinate System, zone 3 (Transverse Mercator)  
Blue 1000-meter Universal Transverse Mercator ticks, zone 6  
North American Datum of 1983 (NAD 83) is shown by dashed  
corner ticks. The values of the shift between NAD 27 and NAD 83  
for 7.5-minute intersections are obtainable from National Geodetic  
Survey NADCON software  
There may be private inholdings within the boundaries of  
the National or State reservations shown on this map.  
Federal reservation boundaries established by the Alaska National  
Interest Lands Conservation Act, PL 96-487, Dec. 2, 1980, are  
shown as compiled by the administering agencies.  
Land lines represent unsurveyed and unmarked locations  
predetermined by the Bureau of Land Management  
Folio CR-6, Copper River Meridian



CONTOUR INTERVAL 100 FEET  
NATIONAL GEODETIC VERTICAL DATUM OF 1929



ROAD CLASSIFICATION  
Heavy-duty ——— Light-duty ———  
Unimproved dirt - - - - - State Route

FOR SALE BY U. S. GEOLOGICAL SURVEY  
FAIRBANKS, ALASKA 99701, DENVER, COLORADO 80225, OR RESTON, VIRGINIA 22029  
A FOLDER DESCRIBING TOPOGRAPHIC MAPS AND SYMBOLS IS AVAILABLE ON REQUEST

VALDEZ (C-2), AK  
61144-E4-TF-063  
1951  
MINOR REVISION 1994

USGS AND HISTORICAL MAP ARCHIVES