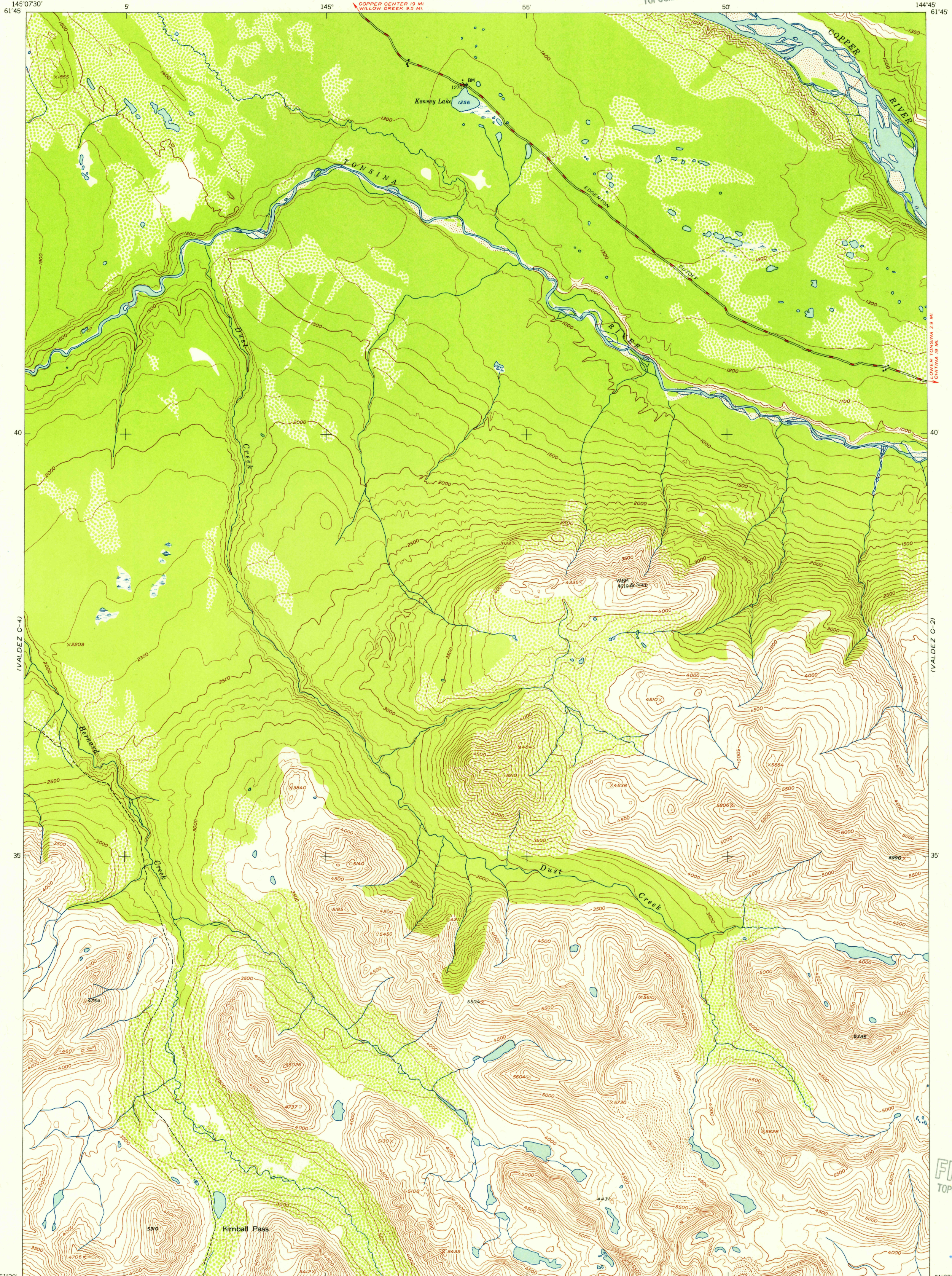


(VALDEZ D-4)

UNITED STATES
DEPARTMENT OF THE INTERIOR
GEOLOGICAL SURVEY

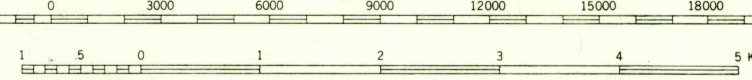
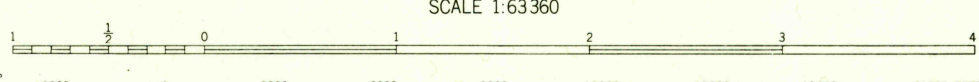
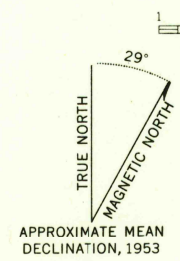
U.S.G.S.
FILE COPY
TOPOGRAPHIC DIVISION

VALDEZ (C-3) QUADRANGLE
ALASKA—THIRD JUDICIAL DIVISION
1:63 360 SERIES (TOPOGRAPHIC)



61°30'
145°07'30"

Mapped, edited, and published by the Geological Survey
Control by USGS and USC&GS
Topography from aerial photographs by multiplex methods 1953
Aerial photographs taken 1950
Universal Transverse Mercator projection, zone 6
1927 North American datum
Unchecked elevations are shown in brown and blue



CONTOUR INTERVAL 100 FEET
AREAS NOT SURVEYED IN DETAIL INDICATED BY BROKEN LINES
DATUM IS MEAN SEA LEVEL



ROAD CLASSIFICATION

ALL WEATHER ROADS	DRY WEATHER ROADS
Hard-surface..... None	Improved dirt..... None
Other..... - - - - -	Unimproved dirt..... None
Trails..... - - - - -	

VALDEZ (C-3), ALASKA
N6130-W14445/15X22.5

1953

FOR SALE BY U.S. GEOLOGICAL SURVEY
FAIRBANKS, ALASKA FEDERAL CENTER, DENVER, COLORADO WASHINGTON 25, D.C.
A FOLDER DESCRIBING TOPOGRAPHIC MAPS AND SYMBOLS IS AVAILABLE ON REQUEST

U.S.G.S.
FILE COPY
TOPOGRAPHIC DIVISION

USGS
Historical File
Topographic Division

NOV 26 1954
2145