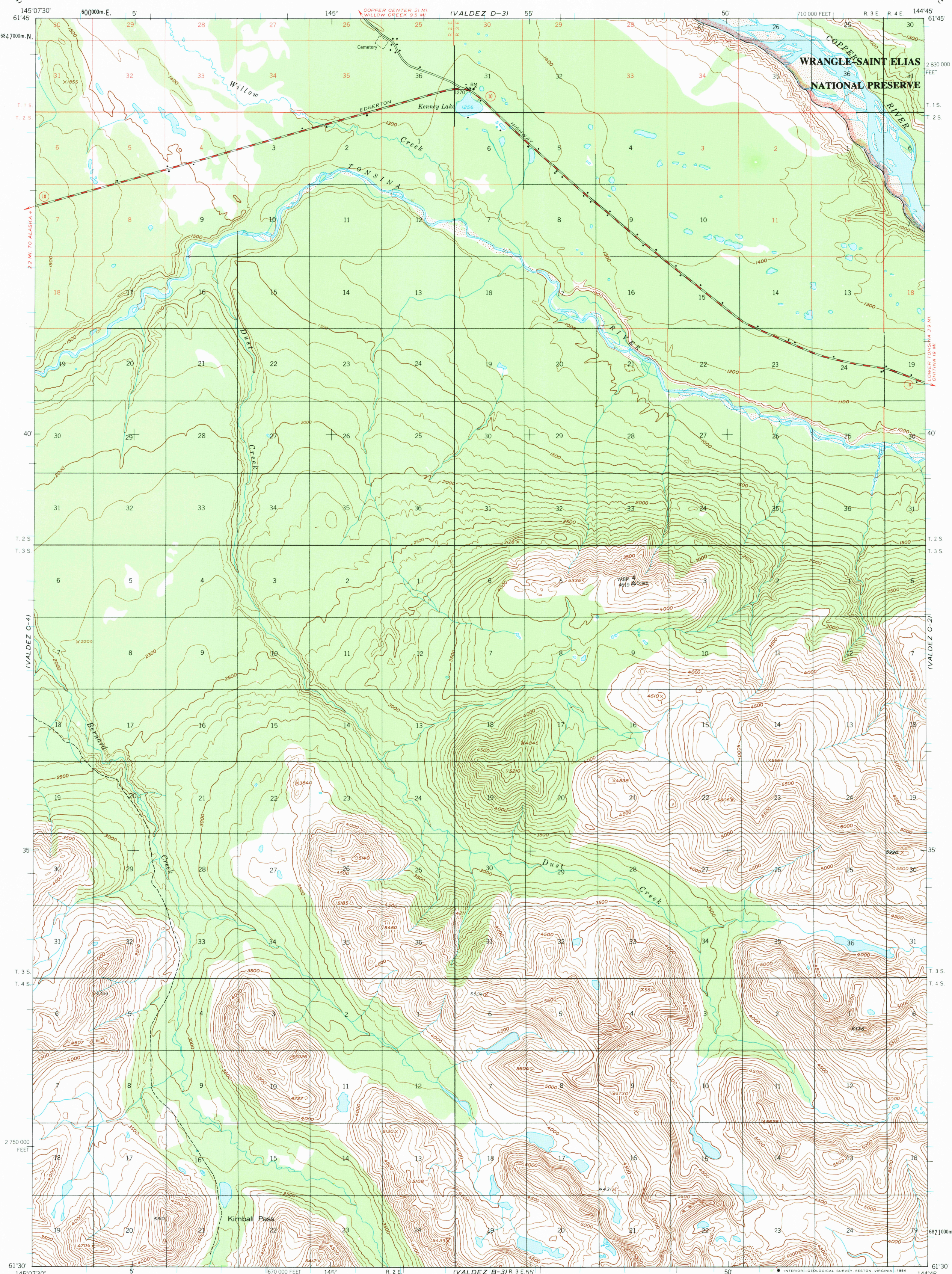


(VALDEZ D-4)

UNITED STATES  
DEPARTMENT OF THE INTERIOR  
GEOLOGICAL SURVEY

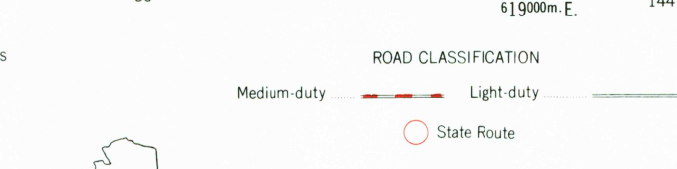
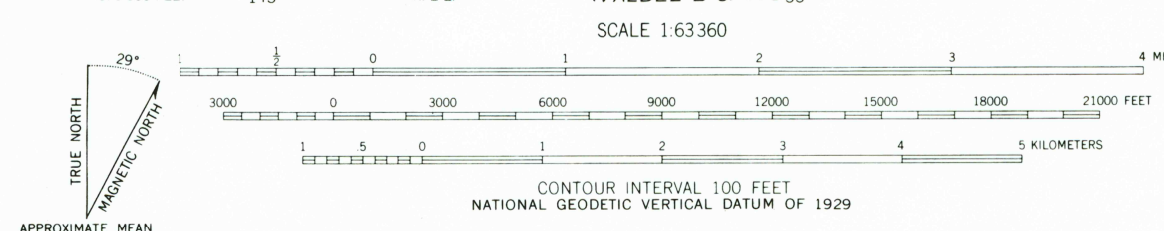
VALDEZ (C-3) QUADRANGLE  
ALASKA  
1:63 360 SERIES (TOPOGRAPHIC)

(VALDEZ D-2)



(VALDEZ B-4)

Mapped, edited, and published by the Geological Survey  
Control by USGS and NOS/NOAA  
Topography by photogrammetric methods from aerial photographs  
taken 1950, field annotated 1951. Map not field checked  
Projection and 1000-meter grid ticks shown in blue.  
Universal Transverse Mercator, zone 6  
10,000-foot grid ticks based on Alaska coordinate  
system, zone 3. 1927 North American Datum  
To place on the predicted North American Datum 1983 move  
the projection lines 56 meters north and 112 meters east  
Gray land lines represent unsurveyed and unmarked locations  
predetermined by the Bureau of Land Management  
Folio CR-6, Cooper River Meridian  
There may be private inholdings within the boundaries of  
the National or State reservations shown on this map  
Federal reservations boundaries established by The Alaska National  
Interest Lands Conservation Act, PL 96-487, Dec. 2, 1983 are shown as  
compiled by the administering agencies



FOR SALE BY U. S. GEOLOGICAL SURVEY  
FAIRBANKS, ALASKA 99701, DENVER, COLORADO 80225, OR RESTON, VIRGINIA 22092  
A FOLDER DESCRIBING TOPOGRAPHIC MAPS AND SYMBOLS IS AVAILABLE ON REQUEST

VALDEZ (C-3), ALASKA  
N6130-W14445/15X22.5  
1951  
MINOR REVISIONS 1983

(VALDEZ B-2)

MAR 30 1984