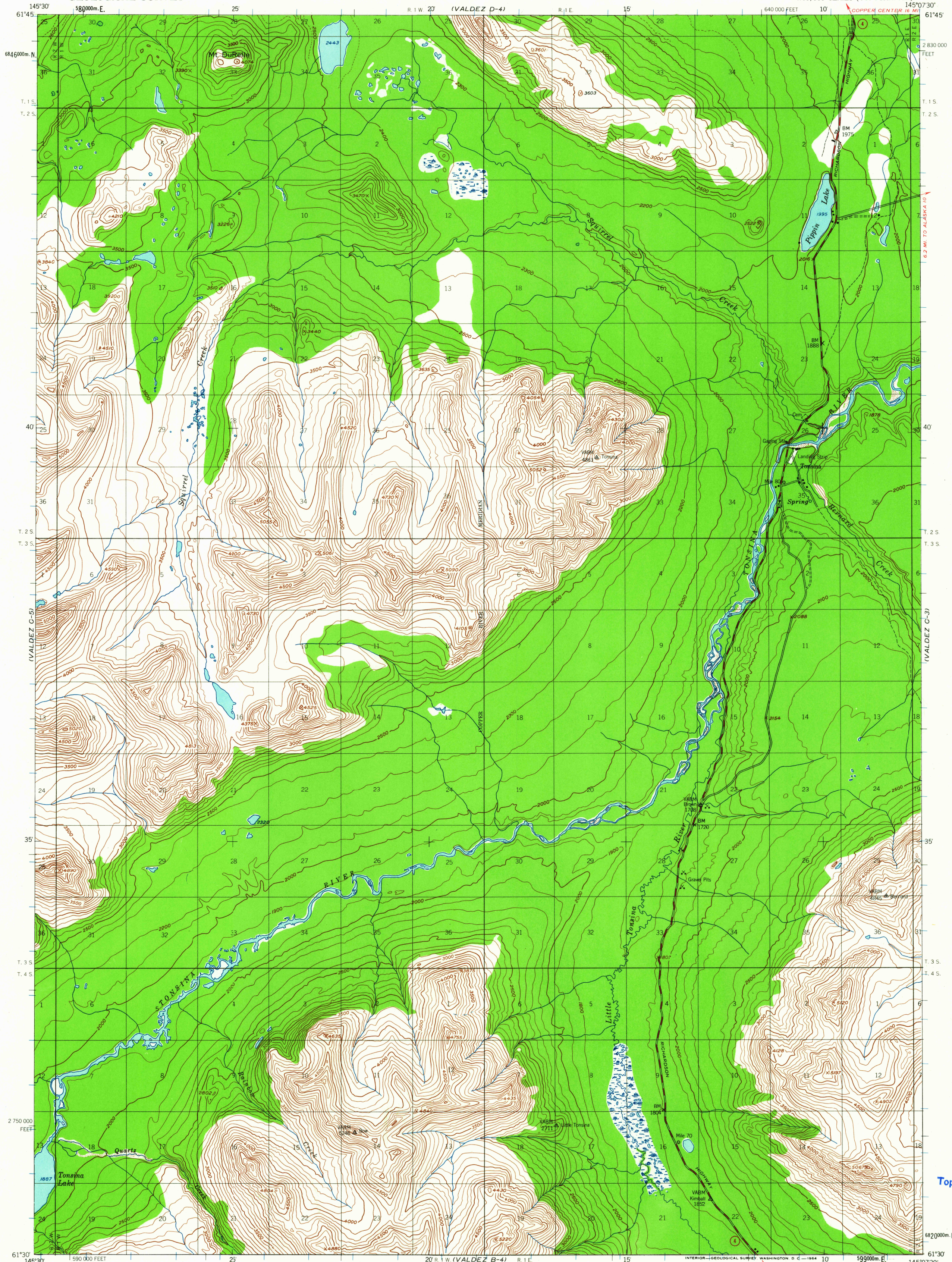


UNITED STATES
DEPARTMENT OF THE INTERIOR
GEOLOGICAL SURVEY

VALDEZ (C-4) QUADRANGLE
ALASKA
1:63,360 SERIES (TOPOGRAPHIC)

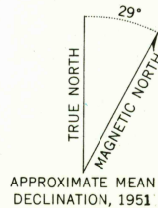


Mapped, edited, and published by the Geological Survey
Control by USGS and USC&GS

Topography by photogrammetric methods from aerial photographs
taken 1950, field annotated 1951. Map not field checked
Universal Transverse Mercator projection, 1927 North American datum
10,000 foot grid based on Alaska coordinate system, zone 3
1000 meter Universal Transverse Mercator grid ticks,
zone 6, shown in blue

Land lines represent unsurveyed and unmarked locations
predetermined by the Bureau of Land Management
Folios CR-5 and CR-6, Copper River Meridian

Swamps, as portrayed, indicate only the wetter areas,
usually of low relief, as interpreted from aerial photographs

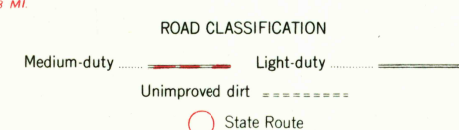


APPROXIMATE MEAN
DECLINATION, 1951



CONTOUR INTERVAL 100 FEET
DASHED LINES REPRESENT 50-FOOT CONTOURS
DATUM IS MEAN SEA LEVEL

FOR SALE BY U.S. GEOLOGICAL SURVEY
FAIRBANKS, ALASKA DENVER 25, COLORADO WASHINGTON 25, D. C.
A FOLDER DESCRIBING TOPOGRAPHIC MAPS AND SYMBOLS IS AVAILABLE ON REQUEST



U.S.G.S. VALDEZ (C-4), ALASKA
N6130-W14507.5/15X22.5
1951
MINOR REVISIONS 1963

USGS
Historical File
Topographic Division

1980
JUN 16 1964