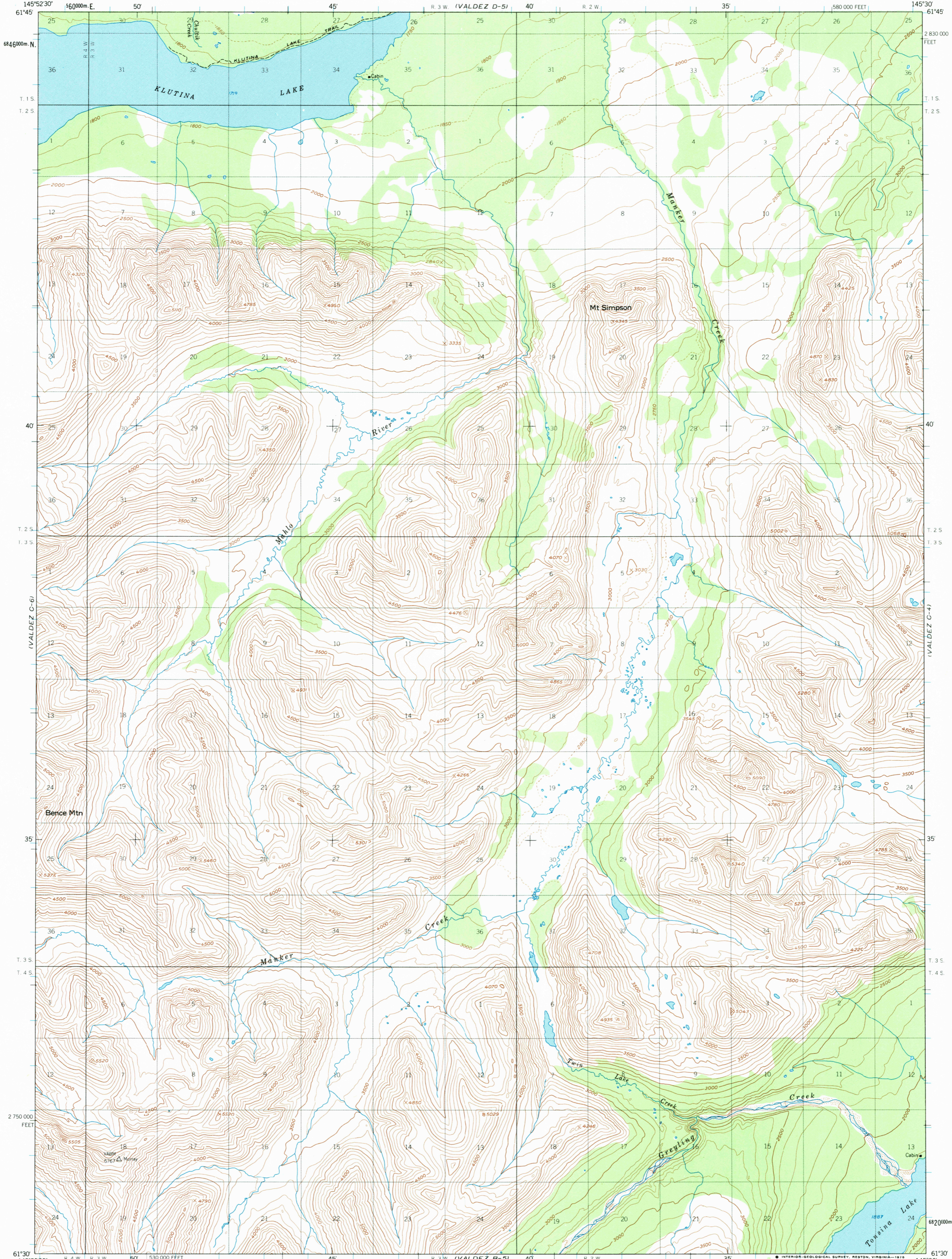
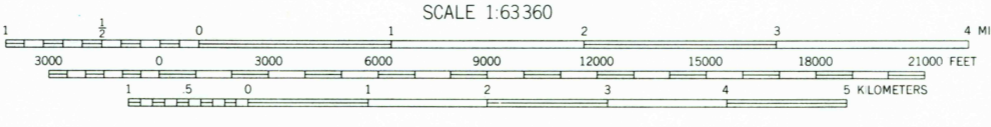
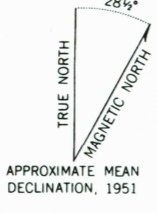


UNITED STATES  
DEPARTMENT OF THE INTERIOR  
GEOLOGICAL SURVEY

VALDEZ (C-5) QUADRANGLE  
ALASKA  
1:63 360 SERIES (TOPOGRAPHIC)



Mapped, edited, and published by the Geological Survey  
Control by USGS  
Topography by photogrammetric methods from aerial photographs  
taken 1950, field annotated 1951. Map not field checked  
Universal Transverse Mercator projection, 1927 North American  
10,000-foot grid based on Alaska coordinate system, zone 3  
1000 meter Universal Transverse Mercator grid ticks,  
zone 6, shown in blue  
Land lines represent unsurveyed and unmarked locators  
predetermined by the Bureau of Land Management  
Folio CR-5, Copper River Meridian



CONTOUR INTERVAL 100 FEET  
DOTTED LINES REPRESENT 50 FOOT CONTOURS  
DATUM IS MEAN SEA LEVEL



ROAD CLASSIFICATION  
Trails

FOR SALE BY U. S. GEOLOGICAL SURVEY  
FAIRBANKS, ALASKA 99701, DENVER, COLORADO 80225, OR RESTON, VIRGINIA 22092  
A FOLDER DESCRIBING TOPOGRAPHIC MAPS AND SYMBOLS IS AVAILABLE ON REQUEST

VALDEZ (C-5), ALASKA  
N6130-W14530/15X22.5  
1951  
MINOR REVISIONS 1965

RETURN TO:  
USGS MID HISTORICAL MAP ARCHIVES

VALDEZ C-5  
ISBN # 0607037741 AK 063  
TF  
9780607037746