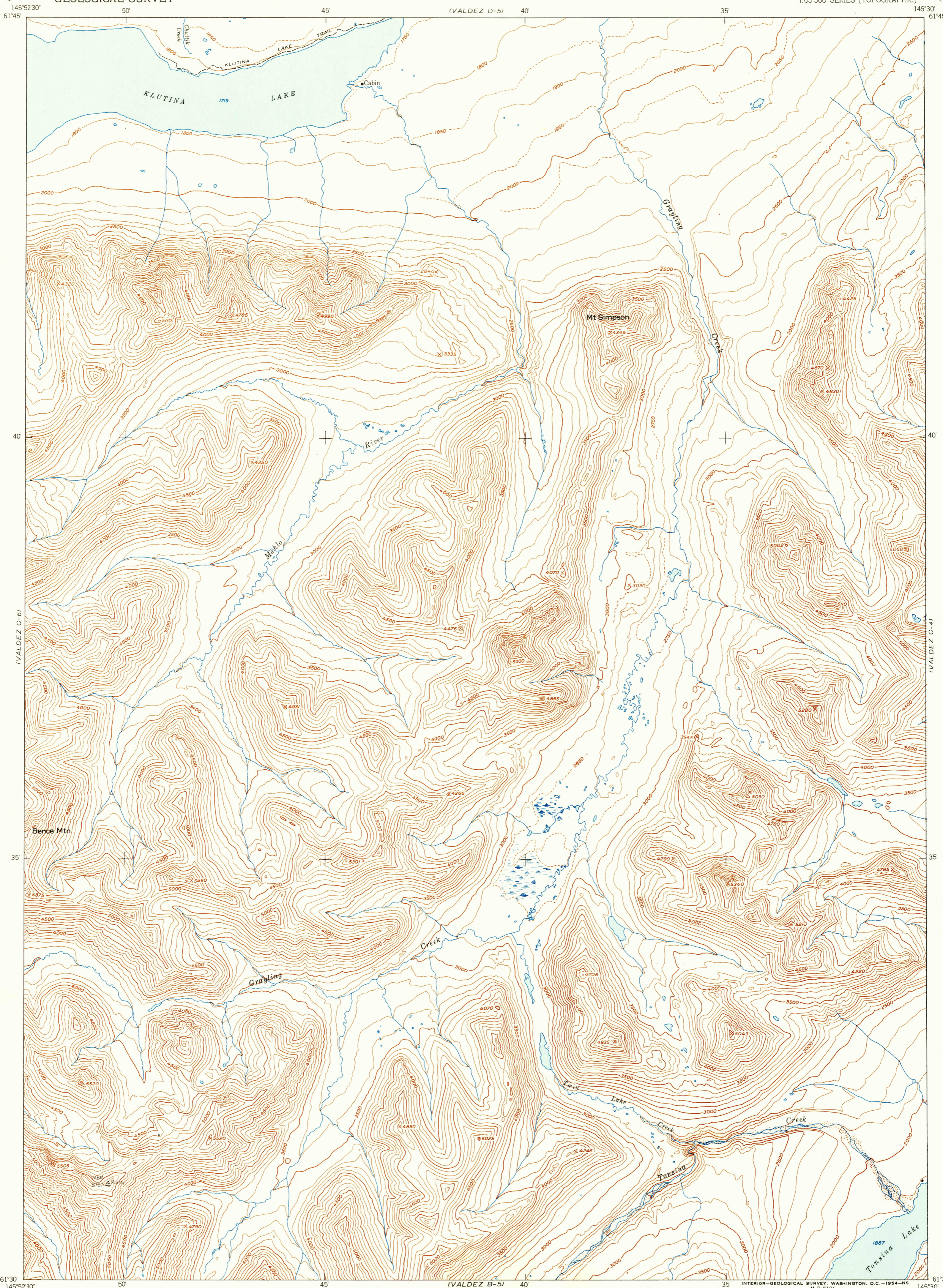
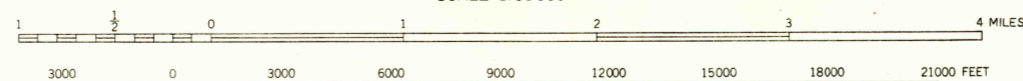


UNITED STATES
DEPARTMENT OF THE INTERIOR
GEOLOGICAL SURVEY

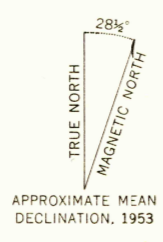
VALDEZ (C-5) QUADRANGLE
ALASKA—THIRD JUDICIAL DIVISION
1:63 360 SERIES (TOPOGRAPHIC)



Mapped, edited, and published by the Geological Survey
Control by USGS
Topography from aerial photographs by multiplex methods 1953
Aerial photographs taken August 1950
Universal Transverse Mercator projection, zone 6
1927 North American datum
Unchecked elevations are shown in brown and blue



CONTOUR INTERVAL 100 FEET
DASHED LINES REPRESENT HALF-INTERVAL CONTOURS
DATUM IS MEAN SEA LEVEL



APPROXIMATE MEAN
DECLINATION, 1953



QUADRANGLE LOCATION

ROAD CLASSIFICATION

ALL WEATHER ROADS	DRY WEATHER ROADS
Hard-surface	None Improved dirt
Other	None Unimproved dirt
	Trails

VALDEZ (C-5), ALASKA
N6130—W14530/15X22.5
1953

FOR SALE BY U.S. GEOLOGICAL SURVEY,
FAIRBANKS, ALASKA FEDERAL CENTER, DENVER, COLORADO WASHINGTON 25, D.C.
A FOLDER DESCRIBING TOPOGRAPHIC MAPS AND SYMBOLS IS AVAILABLE ON REQUEST

