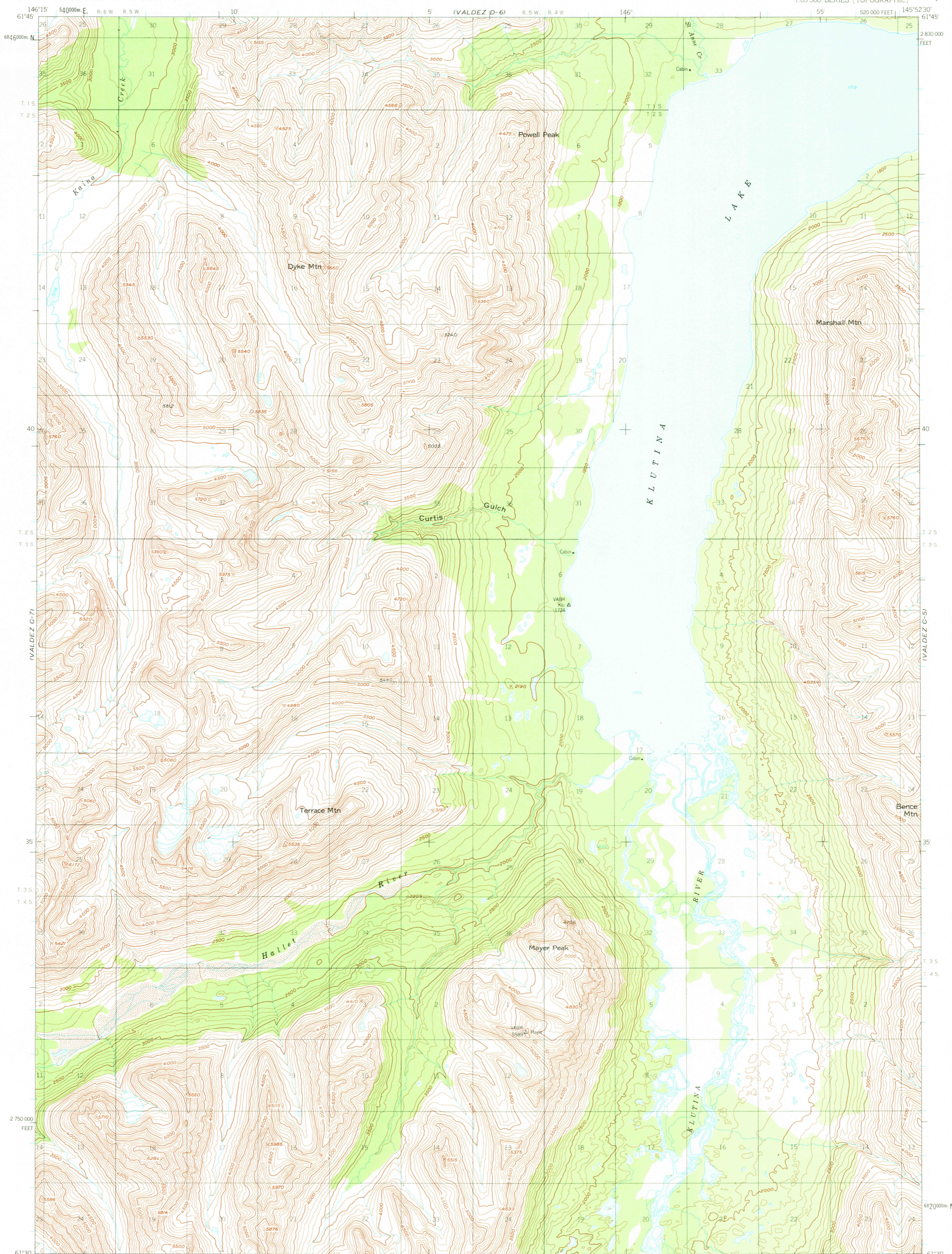


IVALDEZ D-7

UNITED STATES
DEPARTMENT OF THE INTERIOR
GEOLOGICAL SURVEY

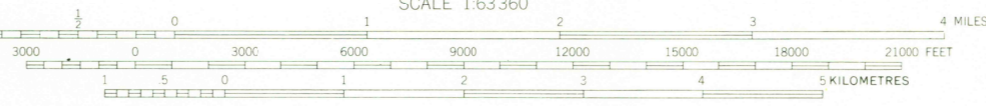
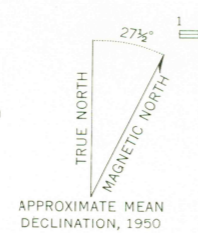
VALDEZ (C-6) QUADRANGLE
ALASKA
1:63 360 SERIES (TOPOGRAPHIC)

IVALDEZ D-9



IVALDEZ B-7

Mapped, edited, and published by the Geological Survey
Control by USGS
Topography by photogrammetric methods from aerial photographs taken 1950. Map not field checked.
Universal Transverse Mercator projection, 1927 North American datum 10,000-foot grid based on Alaska coordinate system, zone 3 1000-metre Universal Transverse Mercator grid ticks, zone 6, shown in blue
Land lines represent unsurveyed and unmarked locations predetermined by the Bureau of Land Management
Folio CR-5, Copper River Meridian



CONTOUR INTERVAL 100 FEET
NATIONAL GEODETIC VERTICAL DATUM OF 1929

FOR SALE BY U. S. GEOLOGICAL SURVEY
FAIRBANKS, ALASKA 99701, DENVER, COLORADO 80225, OR RESTON, VIRGINIA 22092
A FOLDER DESCRIBING TOPOGRAPHIC MAPS AND SYMBOLS IS AVAILABLE ON REQUEST



ROAD CLASSIFICATION
No roads or trails in this area

VALDEZ (C-6), ALASKA
N6130-W14552.5/15X22.5

1950
MINOR REVISIONS 1965

USGS
HISTORICAL FILE
TOPOGRAPHIC DIVISION