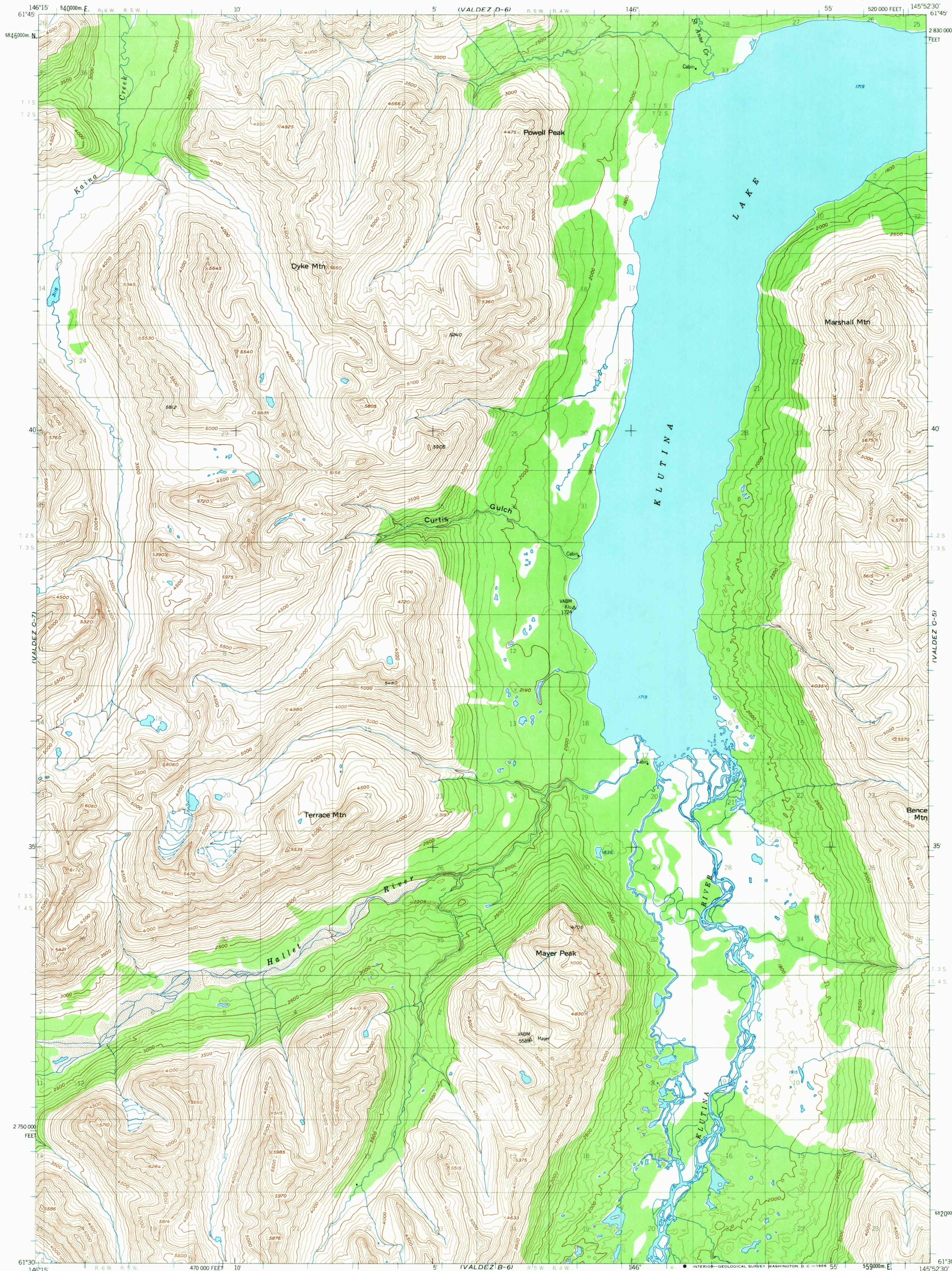


(VALDEZ D-7)

UNITED STATES
DEPARTMENT OF THE INTERIOR
GEOLOGICAL SURVEY

VALDEZ (C-6) QUADRANGLE
ALASKA
1:63 360 SERIES (TOPOGRAPHIC)

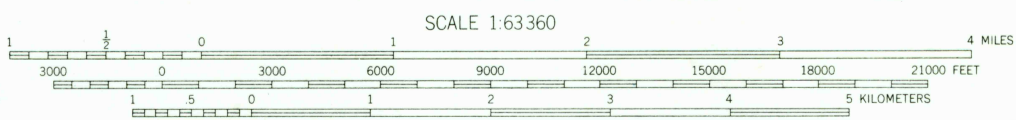
(VALDEZ D-5)



(VALDEZ B-7)

Mapped, edited, and published by the Geological Survey
Control by USGS
Topography by photogrammetric methods from aerial photographs
taken 1950. Map not field checked
Universal Transverse Mercator projection, 1927 North American datum
10,000-foot grid based on Alaska coordinate system, zone 3
1000-meter Universal Transverse Mercator grid ticks,
zone 6, shown in blue
Land lines represent unsurveyed and unmarked locations
predetermined by the Bureau of Land Management
Folio CR-5, Copper River Meridian

APPROXIMATE MEAN
DECLINATION, 1950
27 1/2°



CONTOUR INTERVAL 100 FEET
DATUM IS MEAN SEA LEVEL

FOR SALE BY U. S. GEOLOGICAL SURVEY
FAIRBANKS, ALASKA 99701, DENVER, COLORADO 80225, OR WASHINGTON, D. C. 20242
A FOLDER DESCRIBING TOPOGRAPHIC MAPS AND SYMBOLS IS AVAILABLE ON REQUEST

U.S. GEOLOGICAL SURVEY
TOPOGRAPHIC DIVISION

VALDEZ (C-6), ALASKA
N6130-W14552.5/15X22.5
1950
MINOR REVISIONS 1965

ROAD CLASSIFICATION
No roads or trails in this area

USGS
Historical File
Topographic Division

1670
OCT 5 1966