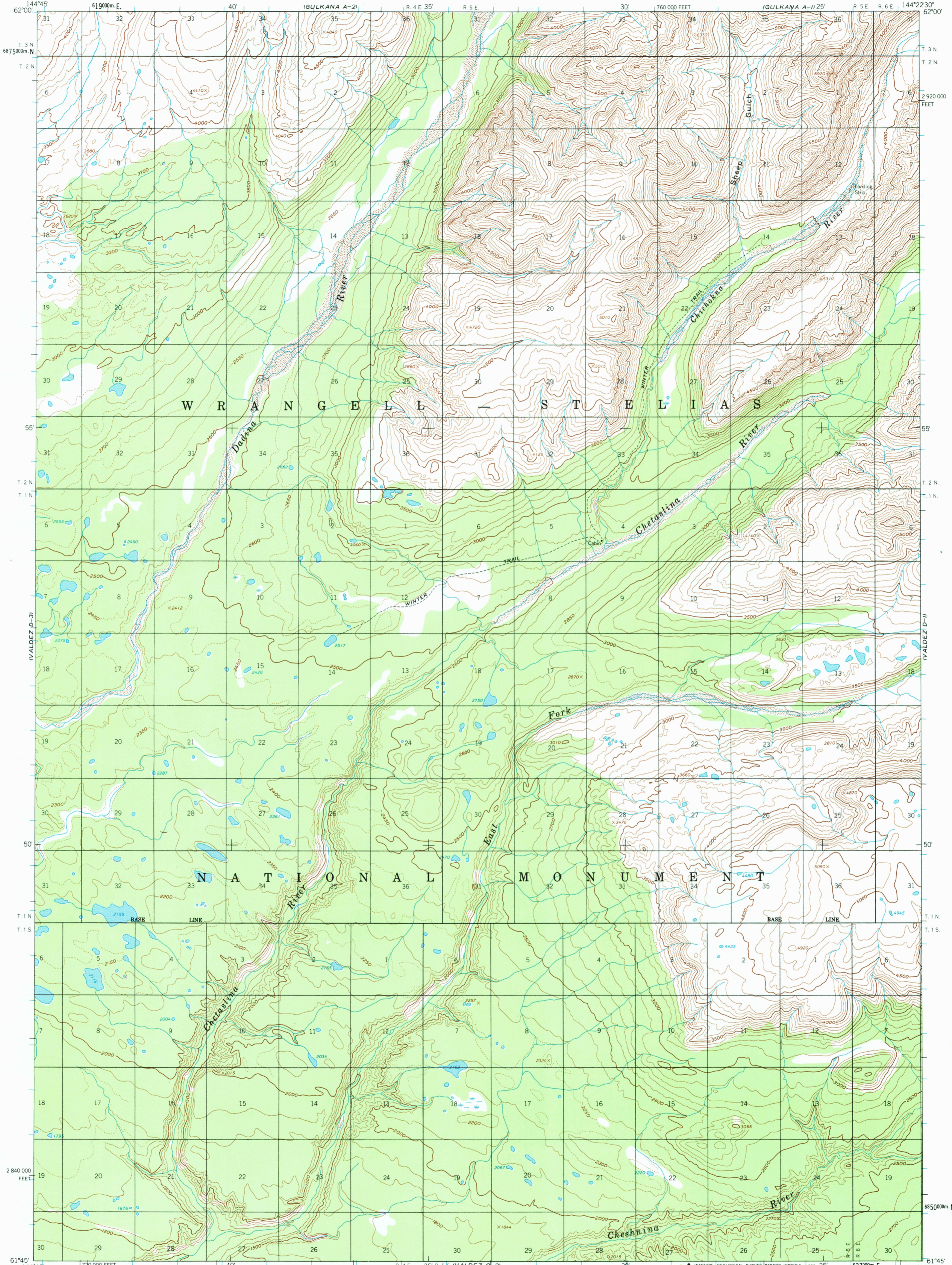


GULKANA A-2

UNITED STATES
DEPARTMENT OF THE INTERIOR
GEOLOGICAL SURVEY

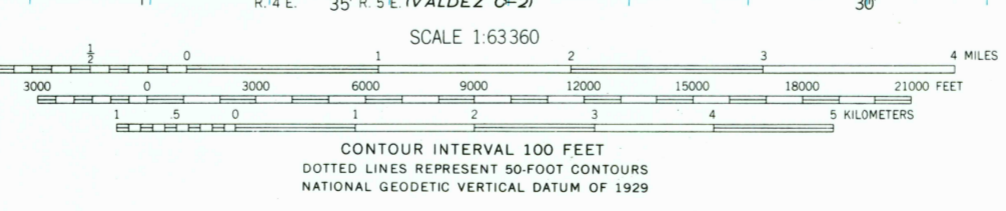
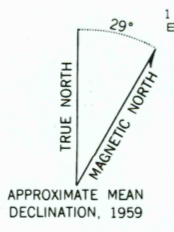
VALDEZ (D-2) QUADRANGLE
ALASKA
I:63360 SERIES (TOPOGRAPHIC)

GULKANA A-1



VALDEZ C-3

Mapped, edited, and published by the Geological Survey
Control by USGS
Topography by photogrammetric methods from aerial photographs taken 1957, field annotated 1959. Map not field checked
Universal Transverse Mercator projection, 1927 North American datum
10,000-foot grid based on Alaska coordinate system, zone 3
1000-meter Universal Transverse Mercator grid ticks, zone 6, shown in blue
Land lines represent unsurveyed and unmarked locations determined by the Bureau of Land Management
Folio CR-3, Copper River Meridian
Swamps, as portrayed indicate only the wetter areas, usually of low relief, as interpreted from aerial photographs
There may be private inholdings within the boundaries of the Wrangell-St. Elias National Monument shown on this map



ROAD CLASSIFICATION
Trails -----

FOR SALE BY U. S. GEOLOGICAL SURVEY
FAIRBANKS, ALASKA 99701, DENVER, COLORADO 80225, OR RESTON, VIRGINIA 22092
A FOLDER DESCRIBING TOPOGRAPHIC MAPS AND SYMBOLS IS AVAILABLE ON REQUEST

VALDEZ (D-2), ALASKA
N6145-W14422.5/15X22.5
1959
MINOR REVISIONS 1979

USGS MAP RETURN TO:
NATIONAL GEOLOGICAL SURVEY
WASHINGTON, D.C. 20508

VALDEZ D-2
ISBN # 0607037792 AK 063
TF
9 780607 037792