

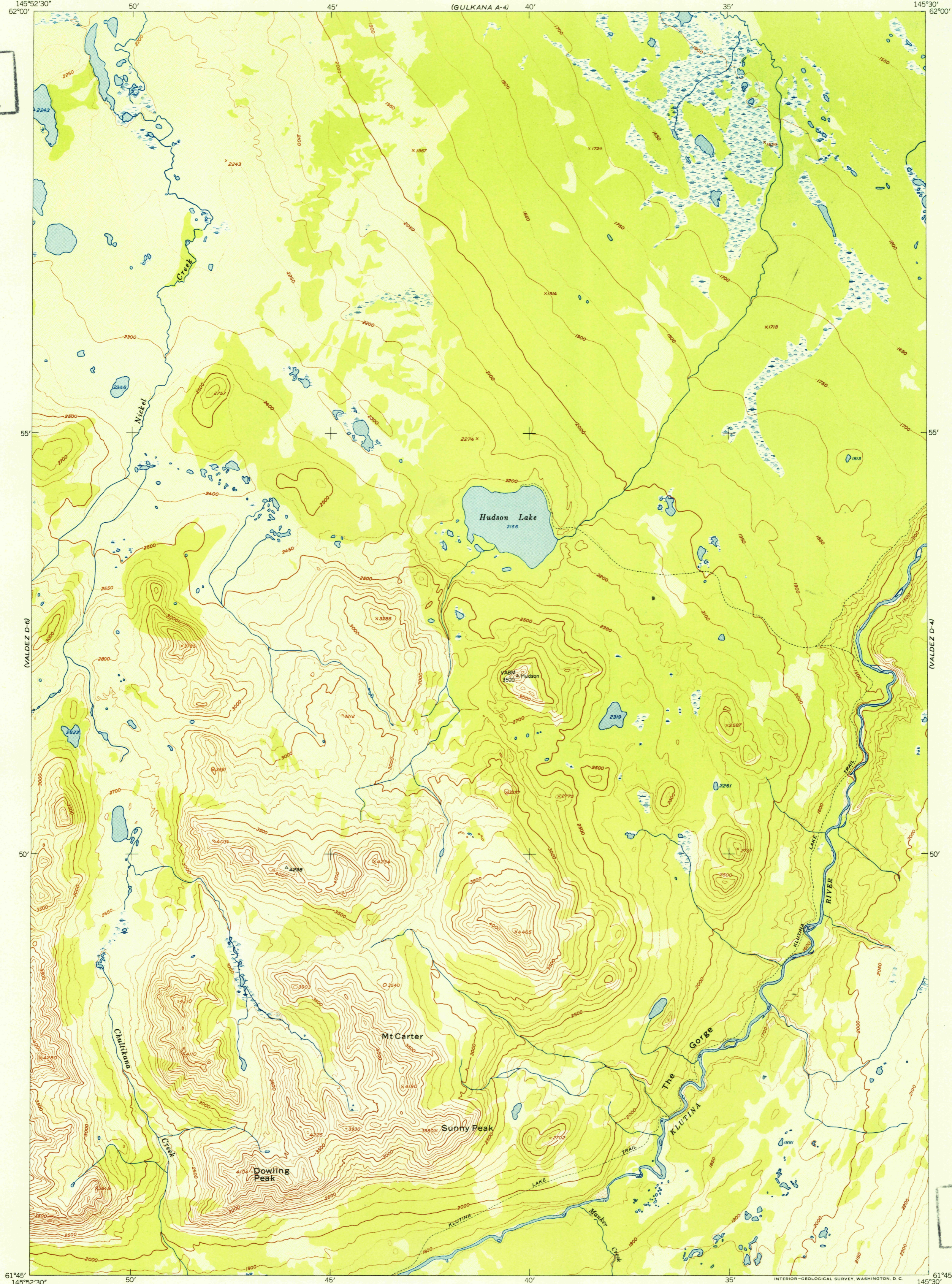
(GULKANA A-4)

UNITED STATES
DEPARTMENT OF THE INTERIOR
GEOLOGICAL SURVEY

VALDEZ (D-5) QUADRANGLE
ALASKA-THIRD JUDICIAL DIVISION
1:63 360 SERIES (TOPOGRAPHIC)

(GULKANA A-3)

U.S.G.S.
FILE COPY
Inspection and Editing.



Mapped, edited and published by the Geological Survey
Control by USGS and USC&GS
Topography from aerial photographs by multiplex methods
Aerial photographs taken September 1948
Universal Transverse Mercator projection, zone 6
1927 North American datum
Unchecked elevations shown in brown and blue

TRUE NORTH
MAGNETIC NORTH
APPROXIMATE MEAN
DECLINATION, 1951

SCALE 1:63 360
0 3000 6000 9000 12000 15000 18000 21000 FEET
0 1 2 3 4 5 KILOMETERS
CONTOUR INTERVAL 100 FEET
DOTTED LINES REPRESENT HALF-INTERVAL CONTOURS
DATUM IS MEAN SEA LEVEL

ROAD CLASSIFICATION
ALL WEATHER ROADS DRY WEATHER ROADS
Hard-surface..... None Improved dirt..... None
Other..... None Unimproved dirt..... None
Trails.....

VALDEZ (D-5), ALASKA
N6145-W14530/15X22.5

EDITION OF 1951

FOR SALE BY U. S. GEOLOGICAL SURVEY, FEDERAL CENTER, DENVER, COLORADO OR WASHINGTON 25, D. C.
A FOLDER DESCRIBING TOPOGRAPHIC MAPS AND SYMBOLS IS AVAILABLE ON REQUEST

U.S.G.S.
FILE COPY
Inspection and Editing.

USGS
Historical File
Topographic Division