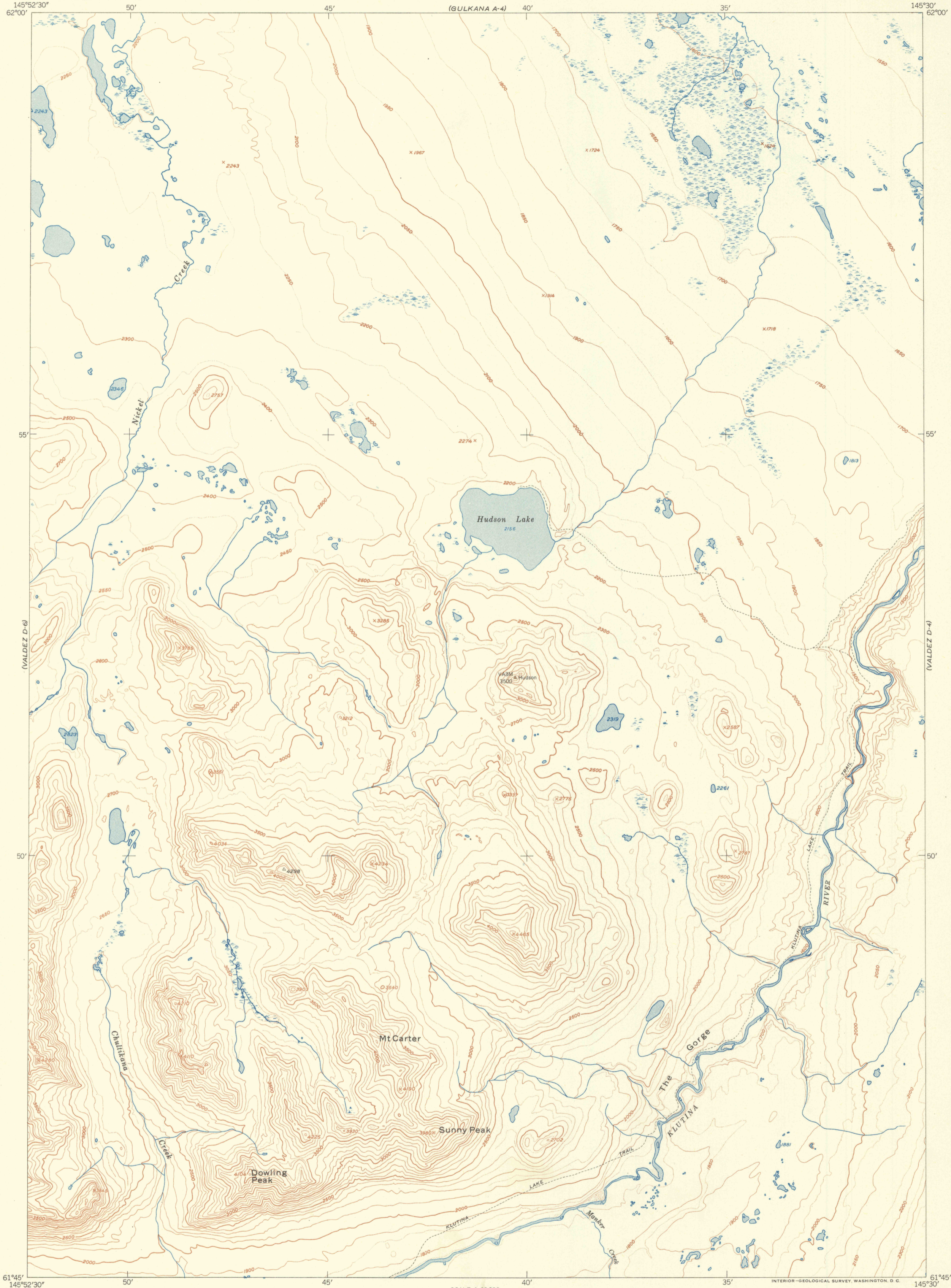


(GULKANA A-4)

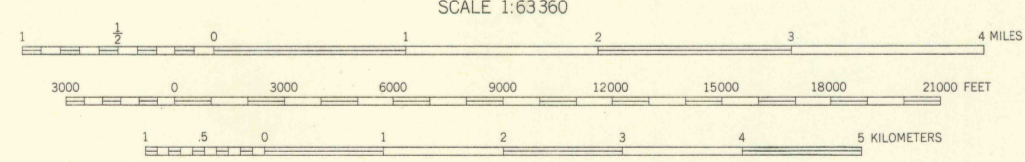
UNITED STATES  
DEPARTMENT OF THE INTERIOR  
GEOLOGICAL SURVEY

VALDEZ (D-5) QUADRANGLE  
ALASKA-THIRD JUDICIAL DIVISION  
1:63 360 SERIES (TOPOGRAPHIC)

(GULKANA A-3)



Mapped, edited and published by the Geological Survey  
Control by USGS and USC&GS  
Topography from aerial photographs by multiplex methods  
Aerial photographs taken September 1948  
Universal Transverse Mercator projection, zone 6  
1927 North American datum  
Unchecked elevations shown in brown and blue



CONTOUR INTERVAL 100 FEET  
DOTTED LINES REPRESENT HALF-INTERVAL CONTOURS  
DATUM IS MEAN SEA LEVEL

ROAD CLASSIFICATION

ALL WEATHER ROADS	DRY WEATHER ROADS
Hard-surface.....None	Improved dirt.....None
Other.....None	Unimproved dirt.....None
Trails.....None	

VALDEZ (D-5), ALASKA  
N6145-W14530/15X22.5

EDITION OF 1951

FOR SALE BY U. S. GEOLOGICAL SURVEY, FEDERAL CENTER, DENVER, COLORADO OR WASHINGTON 25, D. C.  
A FOLDER DESCRIBING TOPOGRAPHIC MAPS AND SYMBOLS IS AVAILABLE ON REQUEST

