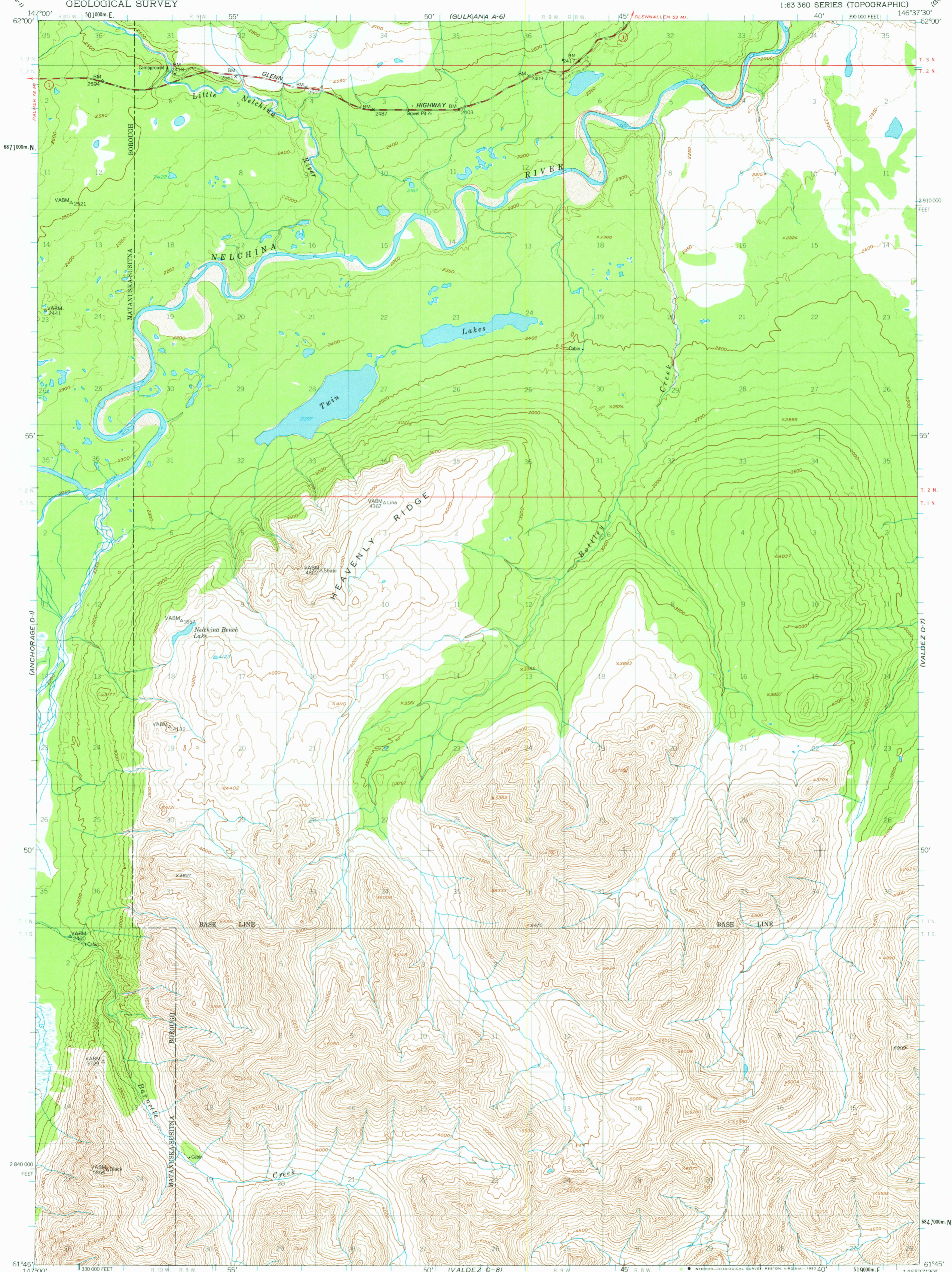


(TALKEETNA MTS A-1)

UNITED STATES
DEPARTMENT OF THE INTERIOR
GEOLOGICAL SURVEY

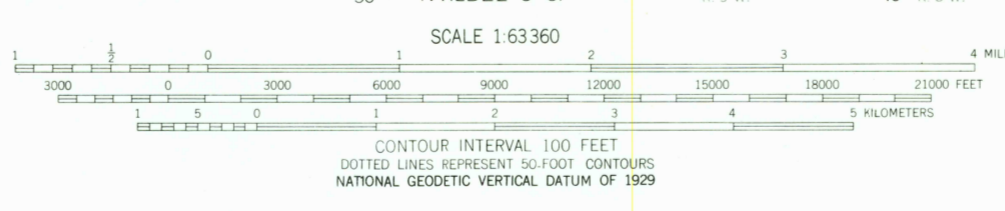
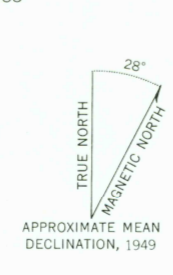
VALDEZ (D-8) QUADRANGLE
ALASKA
1:63 360 SERIES (TOPOGRAPHIC)

(GULKANA A-6)



(ANCHORAGE C-1)

Mapped, edited, and published by the Geological Survey
Control by USGS and USCGS
Topography by photogrammetric methods from aerial photographs
taken 1949, field annotated 1949. Map not field checked
Universal Transverse Mercator projection, 1927 North American datum
10,000-foot grid based on Alaska coordinate system, zone 3
1000-meter Universal Transverse Mercator grid ticks,
zone 6, shown in blue
Land lines represent unsurveyed and unmarked locations
predetermined by the Bureau of Land Management
Folios CR-4 and CR-5, Copper River Meridian
Swamps, as portrayed, indicate only the wetter areas,
usually of low relief, as interpreted from aerial photographs
To place on the predicted North American Datum 1983 move
the projection lines 59 meters north and 114 meters east



CONTOUR INTERVAL 100 FEET
DOTTED LINES REPRESENT 50-FOOT CONTOURS
NATIONAL GEODETIC VERTICAL DATUM OF 1929



ROAD CLASSIFICATION
Medium-duty
State Route

FOR SALE BY U.S. GEOLOGICAL SURVEY
FAIRBANKS, ALASKA 99701, DENVER, COLORADO 80225, OR RESTON, VIRGINIA 22092
A FOLDER DESCRIBING TOPOGRAPHIC MAPS AND SYMBOLS IS AVAILABLE ON REQUEST

VALDEZ (D-8), ALASKA
N6145-W14637.5/15X22.5
1949
LIMITED REVISIONS 1981

APR 6 1982

1300