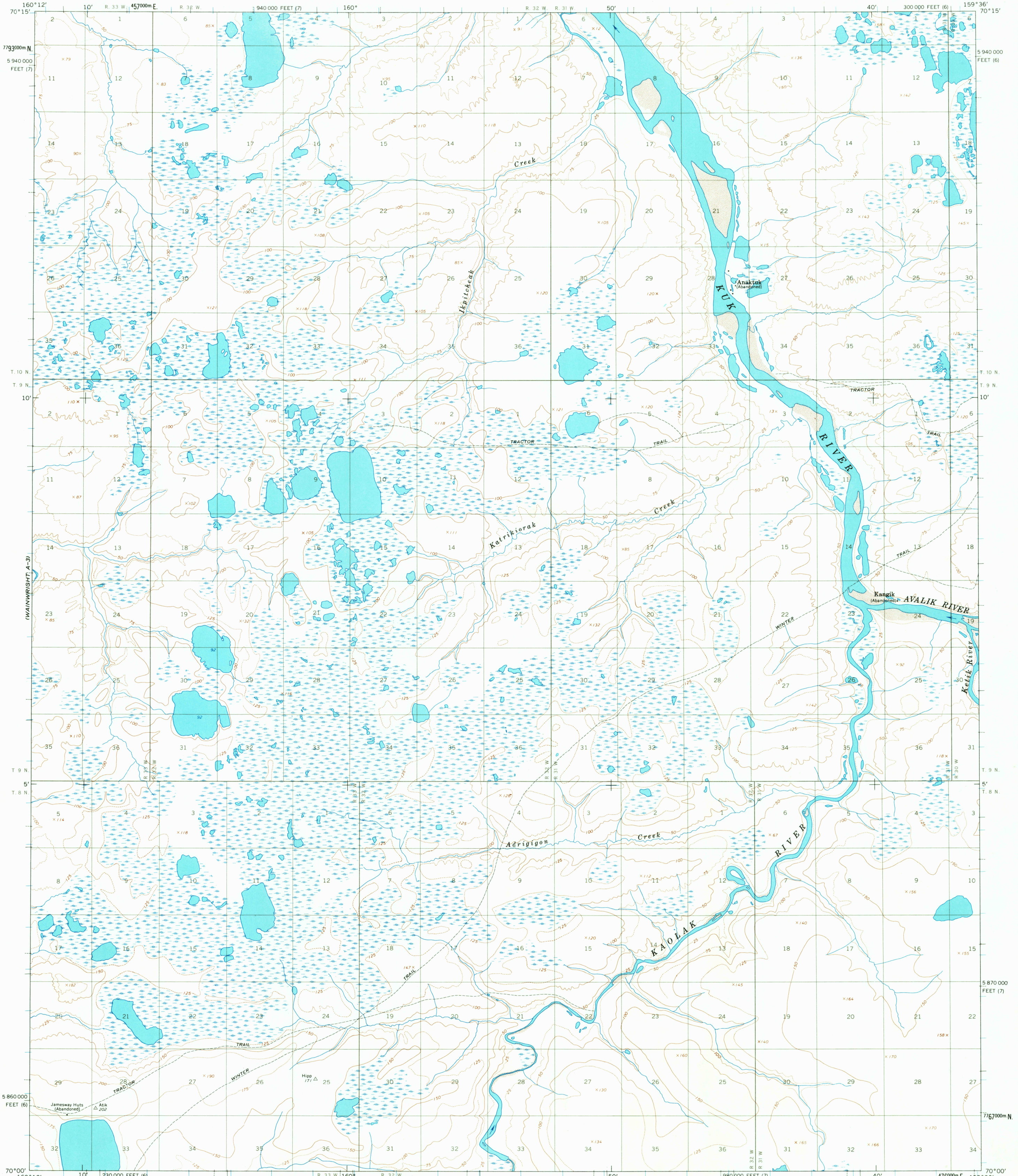
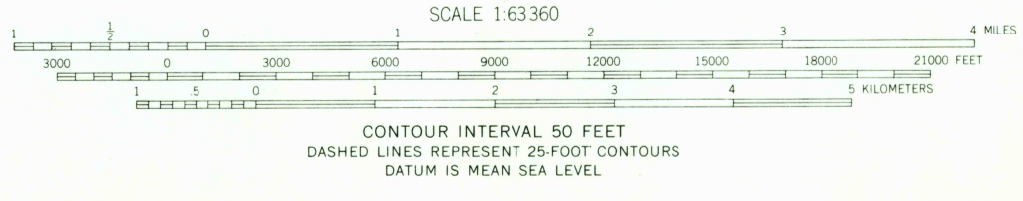
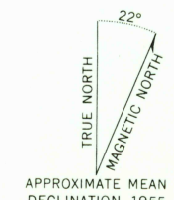


(WAINWRIGHT B-1)



UTUKOK RIVER D-3

Mapped by the Army Map Service  
Edited and published by the Geological Survey  
Control by USC&GS and USCE  
Topography by photogrammetric methods from aerial photographs  
taken 1955, field annotated 1955. Map not field checked  
Universal Transverse Mercator projection. 1927 North American datum  
10,000-foot grids based on Alaska coordinate system, zones 6 and 7  
1000-meter Universal Transverse Mercator grid ticks,  
zone 4, shown in blue  
Land lines represent unsurveyed and unmarked locations  
predetermined by the Bureau of Land Management  
Folios U-5 and U-6, Umiat Meridian  
Entire area lies within Naval Petroleum Reserve No. 4



SCALE 1:63 360  
CONTOUR INTERVAL 50 FEET  
DASHED LINES REPRESENT 25-FOOT CONTOURS  
DATUM IS MEAN SEA LEVEL

USGS  
Historical File  
Topographic Division  
ROAD CLASSIFICATION  
Trails  
WAINWRIGHT (A-2), ALASKA  
N7000-W15936/15X36  
1955

FOR SALE BY U. S. GEOLOGICAL SURVEY  
FAIRBANKS, ALASKA 99701, DENVER, COLORADO 80225, OR WASHINGTON, D. C. 20242  
A FOLDER DESCRIBING TOPOGRAPHIC MAPS AND SYMBOLS IS AVAILABLE ON REQUEST

2085  
SEP 10 1966