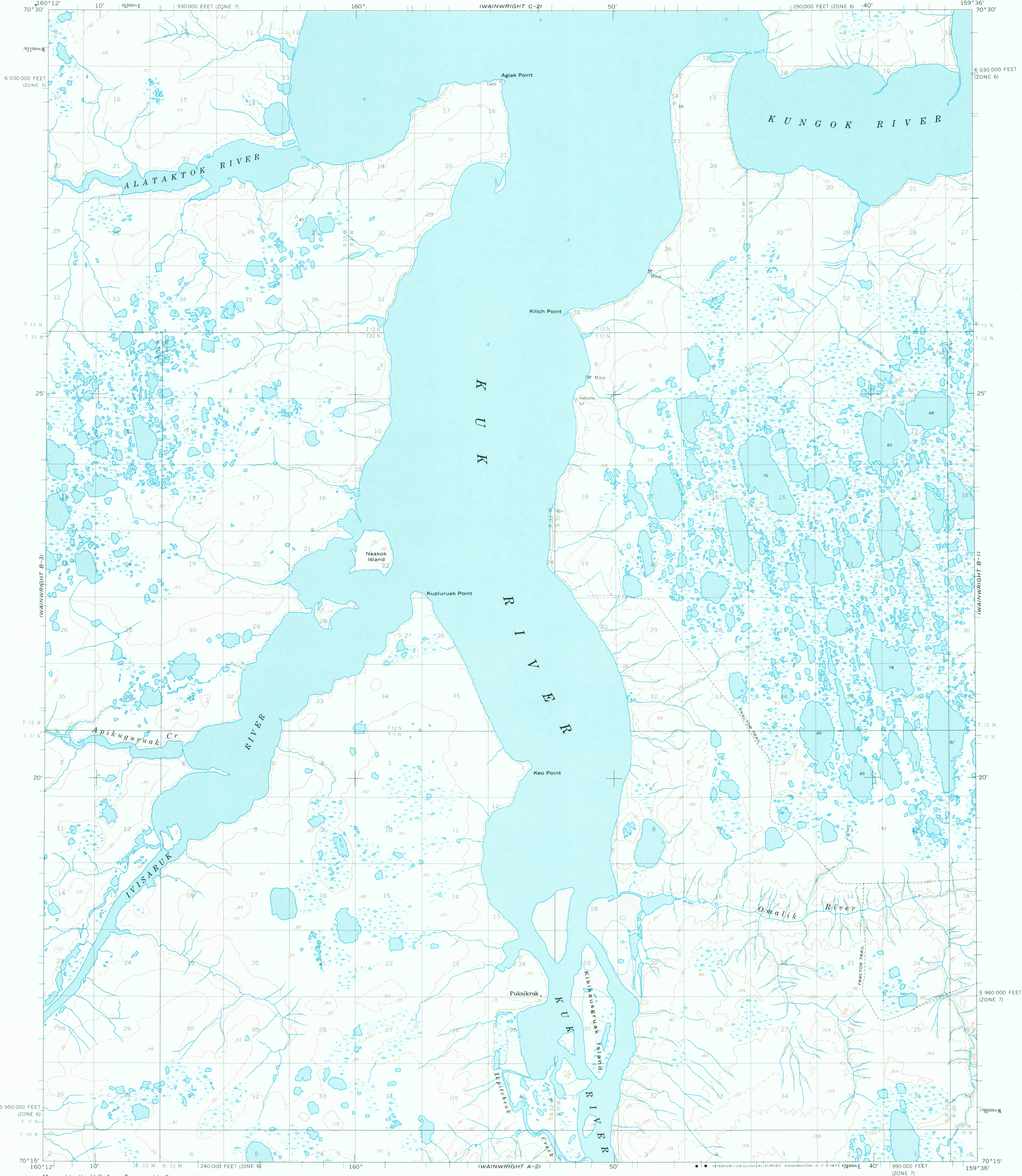
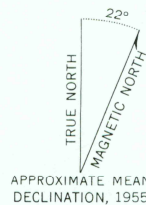


UNITED STATES
DEPARTMENT OF THE INTERIOR
GEOLOGICAL SURVEY

WAINWRIGHT (B-2) QUADRANGLE
ALASKA
1:63 360 SERIES (TOPOGRAPHIC)



Mapped by the U.S. Army Topographic Command
Published for civil use by the Geological Survey
Control by USC&GS and USCE
Topography by photogrammetric methods from aerial photographs
taken 1955, field annotated 1955. Map not field checked.
Selected hydrographic data compiled from USC&GS
Chart 9402 (1955). This information is not intended
for navigational purposes
Universal Transverse Mercator projection. 1927 North American datum
10,000-foot grid based on Alaska coordinate system, zones 6 and 7
1000-meter Universal Transverse Mercator grid ticks, zone 4, shown in blue
Land lines represent unsurveyed and unmarked locations predetermined
by the Bureau of Land Management Folio U-5, Umiat Meridian
Entire area lies within Naval Petroleum Reserve No. 4
Lake elevations are unchecked.



CONTOUR INTERVAL 50 FEET
DASHED LINES REPRESENT 25-FOOT CONTOURS
DATUM IS MEAN SEA LEVEL
DEPTH CURVES AND SOUNDINGS IN FEET—DATUM IS MEAN LOWER LOW WATER
SHORELINE SHOWN REPRESENTS THE APPROXIMATE LINE OF MEAN HIGH WATER
THE MEAN RANGE OF TIDE IS APPROXIMATELY 0.5 OF A FOOT

FOR SALE BY U.S. GEOLOGICAL SURVEY
FAIRBANKS, ALASKA 99701, DENVER, COLORADO 80225, OR WASHINGTON, D.C. 20242
A FOLDER DESCRIBING TOPOGRAPHIC MAPS AND SYMBOLS IS AVAILABLE ON REQUEST



ROAD CLASSIFICATION
Trails

WAINWRIGHT (B-2), ALASKA
N7015—W15936/15 X 36

1955

RETURN TO:
USGS MID-HISTORICAL MAP ARCHIVE

WAINWRIGHT B-2

AK 063

TF

ISBN # 0607037946

