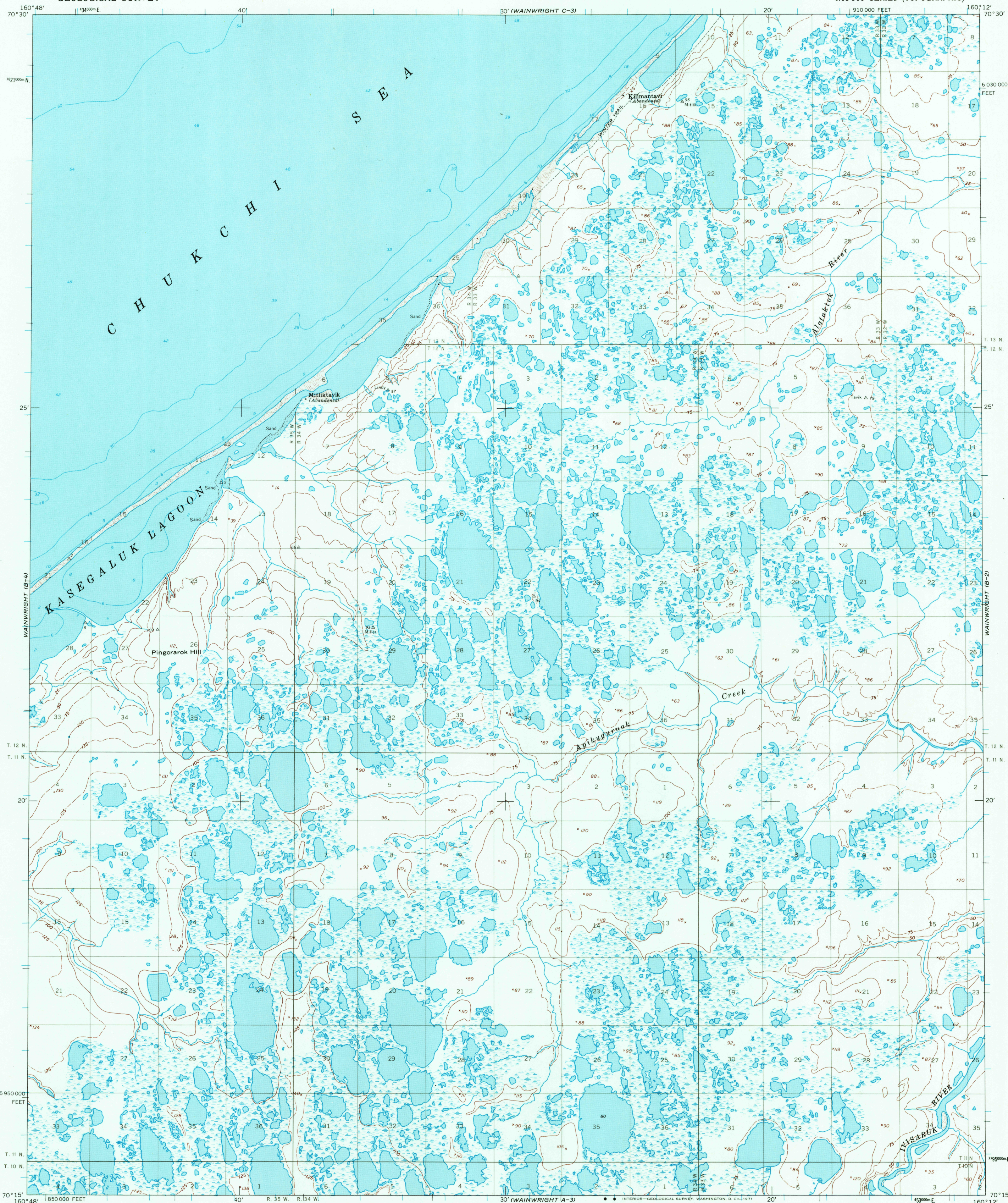


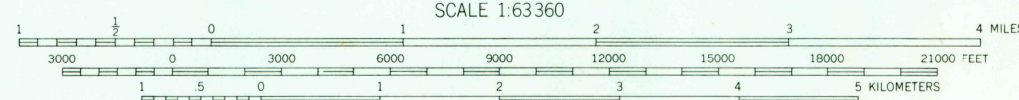
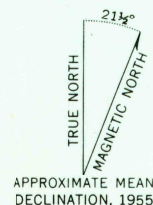
UNITED STATES  
DEPARTMENT OF THE INTERIOR  
GEOLOGICAL SURVEY

WAINWRIGHT (B-3) QUADRANGLE  
ALASKA  
1:63 360 SERIES (TOPOGRAPHIC)

(WAINWRIGHT C-2)



Mapped by the U.S. Army Topographic Command  
Published for civil use by the Geological Survey  
Control by USC&GS and USCE  
Topography by photogrammetric methods from aerial photographs  
taken 1955, field annotated 1955. Map not field checked  
Selected hydrographic data compiled from USC&GS Chart 9460 (1955).  
This information is not intended for navigational purposes  
Universal Transverse Mercator projection, 1927 North American datum  
10,000-foot grid based on Alaska coordinate system, zone 7  
1,000-meter Universal Transverse Mercator grid ticks, zone 4, shown in blue  
Land lines represent unsurveyed and unmarked locations predetermined  
by the Bureau of Land Management, Folios U-5, and U-6, Umiat Meridian  
Entire area lies within Naval Petroleum Reserve No. 4  
Lake elevations are unchecked



CONTOUR INTERVAL 50 FEET  
DASHED LINES REPRESENT 25-FOOT CONTOURS  
DATUM IS MEAN SEA LEVEL  
DEPTH CURVES AND SOUNDINGS IN FEET—DATUM IS MEAN LOWER LOW WATER  
SHORELINE SHOWN REPRESENTS THE APPROXIMATE LINE OF MEAN HIGH WATER  
THE MEAN RANGE OF TIDE IS APPROXIMATELY 0.5 OF A FOOT

FOR SALE BY U.S. GEOLOGICAL SURVEY  
FAIRBANKS, ALASKA 99701, DENVER, COLORADO 80225, OR WASHINGTON, D.C. 20242  
A FOLDER DESCRIBING TOPOGRAPHIC MAPS AND SYMBOLS IS AVAILABLE ON REQUEST

U.S.G.S.  
**FILE COPY**  
TOPOGRAPHIC DIVISION  
QUADRANGLE LOCATION  
WAINWRIGHT (B-3), ALASKA  
N7015—W16012/15 X 36  
1955

2560  
JUL 14 1971