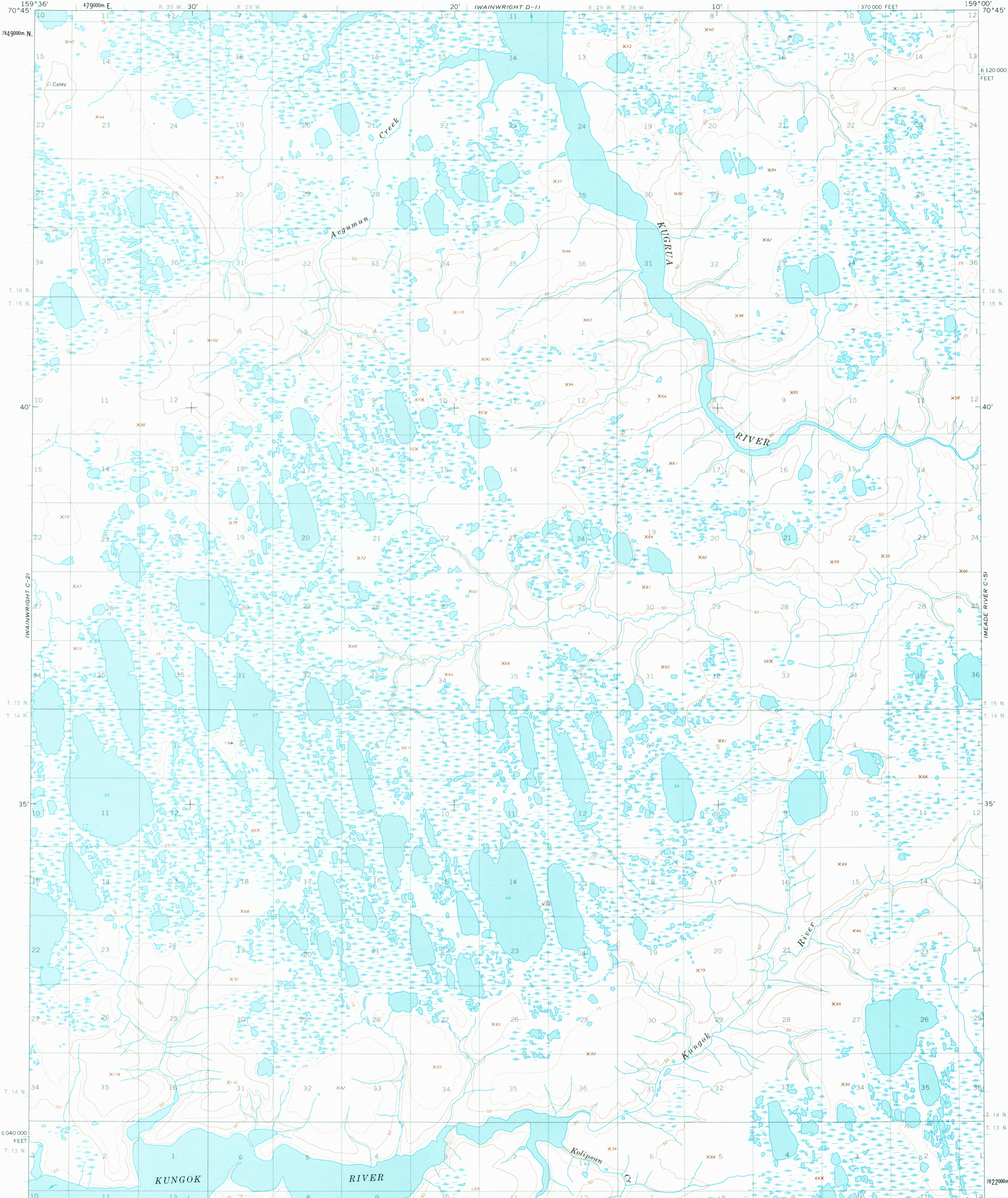


UNITED STATES
DEPARTMENT OF THE INTERIOR
GEOLOGICAL SURVEY

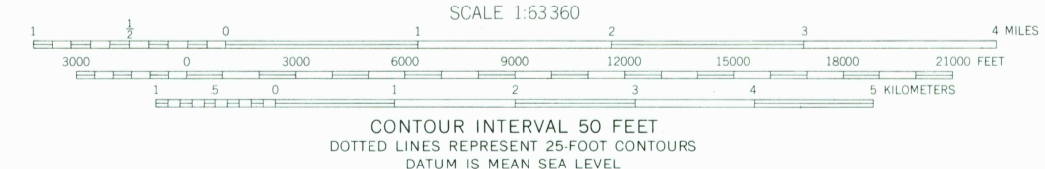
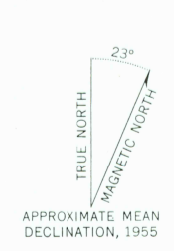
WAINWRIGHT (C-1) QUADRANGLE
ALASKA
1:63 360 SERIES (TOPOGRAPHIC)

WAINWRIGHT D-2
WAINWRIGHT C-2
WAINWRIGHT B-2

WAINWRIGHT D-1
WAINWRIGHT B-1
MEADE RIVER D-5
MEADE RIVER C-5
MEADE RIVER B-5



Mapped by the Army Map Service
Edited and published by the Geological Survey
Control by USC&GS and USCE
Topography by photogrammetric methods from aerial photographs
taken 1955, field annotated 1955. Map not field checked
Universal Transverse Mercator projection. 1927 North American datum
10,000-foot grid based on Alaska coordinate system, zone 6
1000-meter Universal Transverse Mercator grid ticks,
zone 4, shown in blue
Land lines represent unsurveyed and unmarked locations
predetermined by the Bureau of Land Management
Folio U-5, Umiat Meridian
Entire area lies within Naval Petroleum Reserve No. 4



ROAD CLASSIFICATION
No roads or trails in this area

FOR SALE BY U. S. GEOLOGICAL SURVEY
FAIRBANKS, ALASKA 99701, DENVER, COLORADO 80225, OR WASHINGTON, D. C. 20242
A FOLDER DESCRIBING TOPOGRAPHIC MAPS AND SYMBOLS IS AVAILABLE ON REQUEST

WAINWRIGHT (C-1), ALASKA
N7030—W15900/15X36
1955

RETURN TO:
USGS AND HISTORICAL MAP ARCHIVES

WAINWRIGHT C-1
ISBN # 0607037869 AK 063
TF
9780607037862