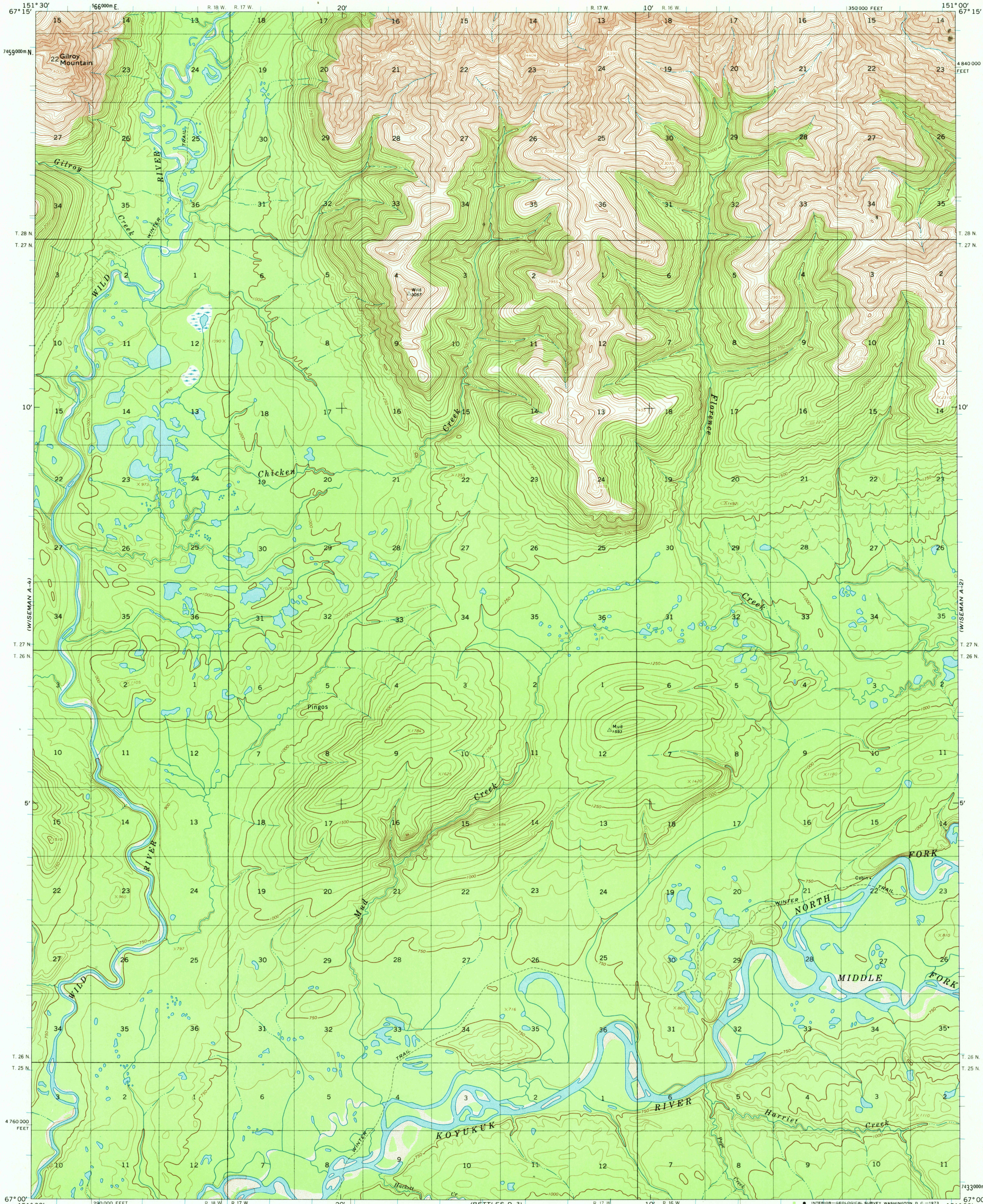


UNITED STATES
DEPARTMENT OF THE INTERIOR
GEOLOGICAL SURVEY

WISEMAN (A-3) QUADRANGLE
ALASKA
1:63 360 SERIES (TOPOGRAPHIC)

(WISEMAN B-2)



Mapped, edited, and published by the Geological Survey

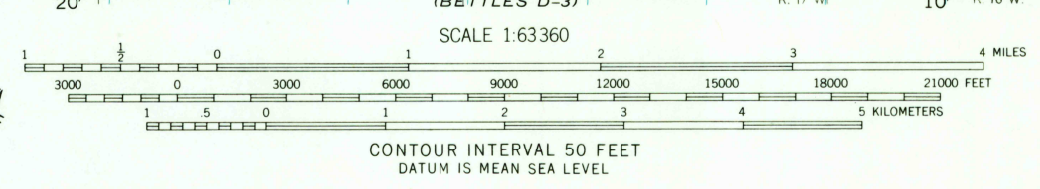
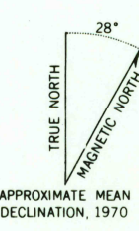
Control by USGS and USC&GS

Topography by photogrammetric methods from aerial photographs taken 1970, field annotated 1970. Map not field checked

Universal Transverse Mercator projection. 1927 North American datum 10,000-foot grid based on Alaska coordinate system, zone 4 1000-meter Universal Transverse Mercator grid ticks, zone 5, shown in blue

Land lines represent unsurveyed and unmarked locations predetermined by the Bureau of Land Management Folios F-3 and F-4, Fairbanks Meridian

Swamps, as portrayed, indicate only the wetter areas usually of low relief, as interpreted from aerial photographs



WISEMAN (A-3), ALASKA
N6700-W15100/15X30

1970
USGS
HISTORICAL FILE
TOPOGRAPHIC DIVISION

FOR SALE BY U. S. GEOLOGICAL SURVEY
FAIRBANKS, ALASKA 99701, DENVER, COLORADO 80225, OR WASHINGTON, D. C. 20242
A FOLDER DESCRIBING TOPOGRAPHIC MAPS AND SYMBOLS IS AVAILABLE ON REQUEST

MAY 3 1973
2625