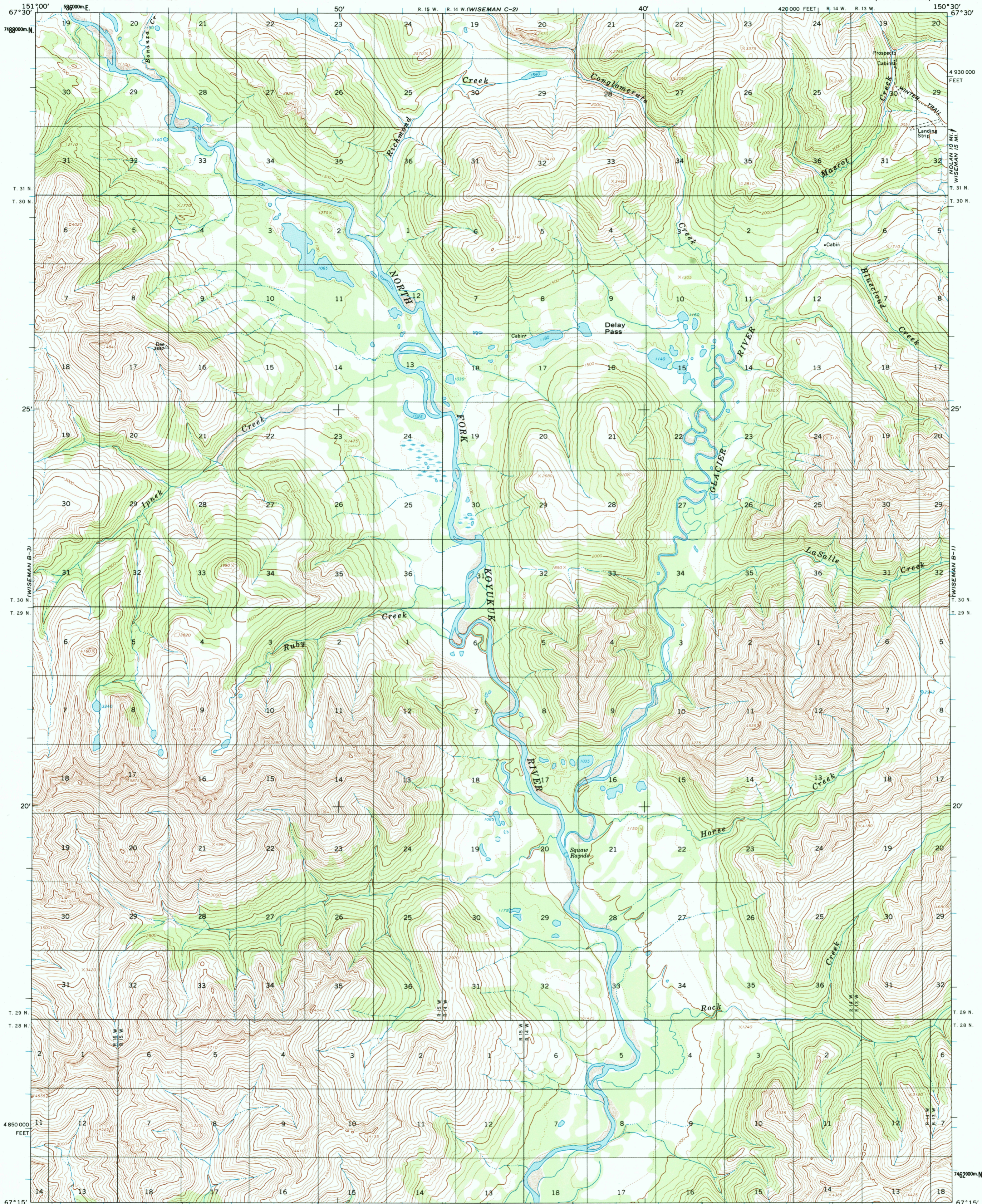
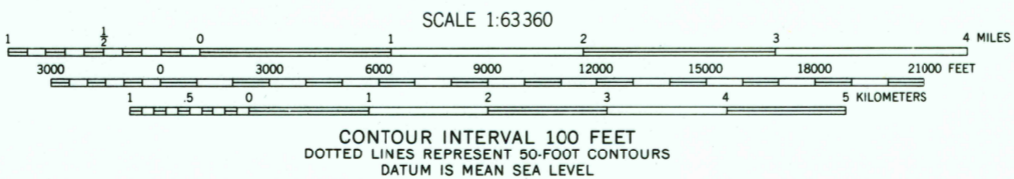
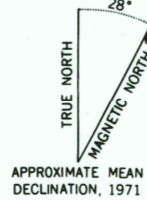


UNITED STATES  
DEPARTMENT OF THE INTERIOR  
GEOLOGICAL SURVEY

WISEMAN (B-2) QUADRANGLE  
ALASKA  
1:63 360 SERIES (TOPOGRAPHIC)



Mapped, edited, and published by the Geological Survey  
Control by USGS and USC&GS  
Topography by photogrammetric methods from aerial photographs  
taken 1970, field annotated 1971. Map not field checked  
Projection and 1000-meter grid ticks: Universal  
Transverse Mercator, zone 5  
10,000-foot grid ticks based on Alaska coordinate  
system, zone 4. 1927 North American datum  
Land lines represent unsurveyed and unmarked locations  
predetermined by the Bureau of Land Management  
Folio F-3, Fairbanks Meridian  
Swamps as portrayed, indicate only the wetter areas,  
usually of low relief, as interpreted from aerial photographs



CONTOUR INTERVAL 100 FEET  
DOTTED LINES REPRESENT 50-FOOT CONTOURS  
DATUM IS MEAN SEA LEVEL

FOR SALE BY U.S. GEOLOGICAL SURVEY  
P.O. BOX 25286, DENVER, COLORADO 80225  
A FOLDER DESCRIBING TOPOGRAPHIC MAPS AND SYMBOLS IS AVAILABLE ON REQUEST



WISEMAN (B-2), ALASKA  
N6715-W15030/15 X 30  
1971

ROAD CLASSIFICATION  
Trails

