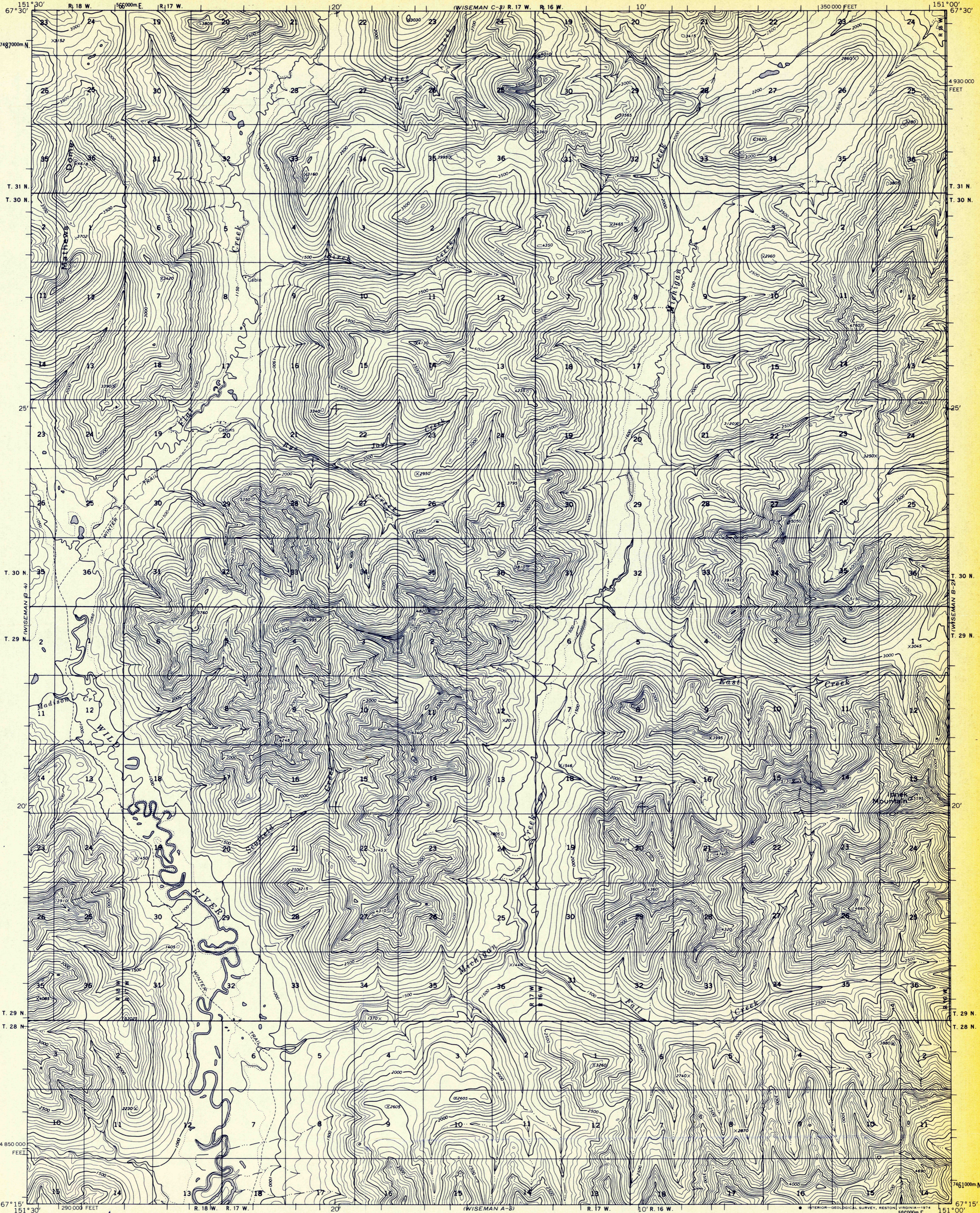


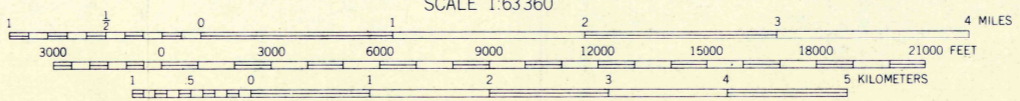
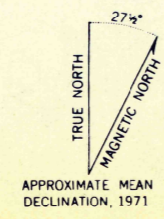
UNITED STATES  
DEPARTMENT OF THE INTERIOR  
GEOLOGICAL SURVEY

WISEMAN (B-3) QUADRANGLE  
ALASKA

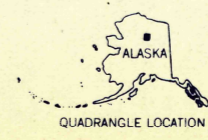
1:63 360 SERIES (TOPOGRAPHIC)



Mapped, edited, and published by the Geological Survey  
Control by USGS and USC&GS  
Topography by photogrammetric methods from aerial photographs  
taken 1970, field annotated 1971. Map not field checked  
Projection and 1000-meter grid ticks: Universal  
Transverse Mercator, zone 5  
10,000-foot grid ticks based on Alaska coordinate  
system, zone 4. 1927 North American datum  
Land lines represent unsurveyed and unmarked locations  
determined by the Bureau of Land Management  
Folio F-3 and F-4, Fairbanks Meridian



CONTOUR INTERVAL 100 FEET  
DOTTED LINES REPRESENT 50-FOOT CONTOURS  
NATIONAL GEODETIC VERTICAL DATUM OF 1929



ROAD CLASSIFICATION  
Trails

FOR SALE BY U.S. GEOLOGICAL SURVEY  
FAIRBANKS, ALASKA 99701, DENVER, COLORADO 80225, OR RESTON, VIRGINIA 22092  
A FOLDER DESCRIBING TOPOGRAPHIC MAPS AND SYMBOLS IS AVAILABLE ON REQUEST

WISEMAN (B-3), ALASKA  
N6715—W15100/15 X 30

1971

NOTE

This map was prepared as part of the U.S. Geological Survey's program for completing

CHIEF,  
ROCKY MOUNTAIN MAPPING CENTER  
U.S. GEOLOGICAL SURVEY  
BLDG 25, FEDERAL CENTER

Wiseman (B-3), Alaska  
Wiseman Project Log  
NC B-14 G1  
(D)