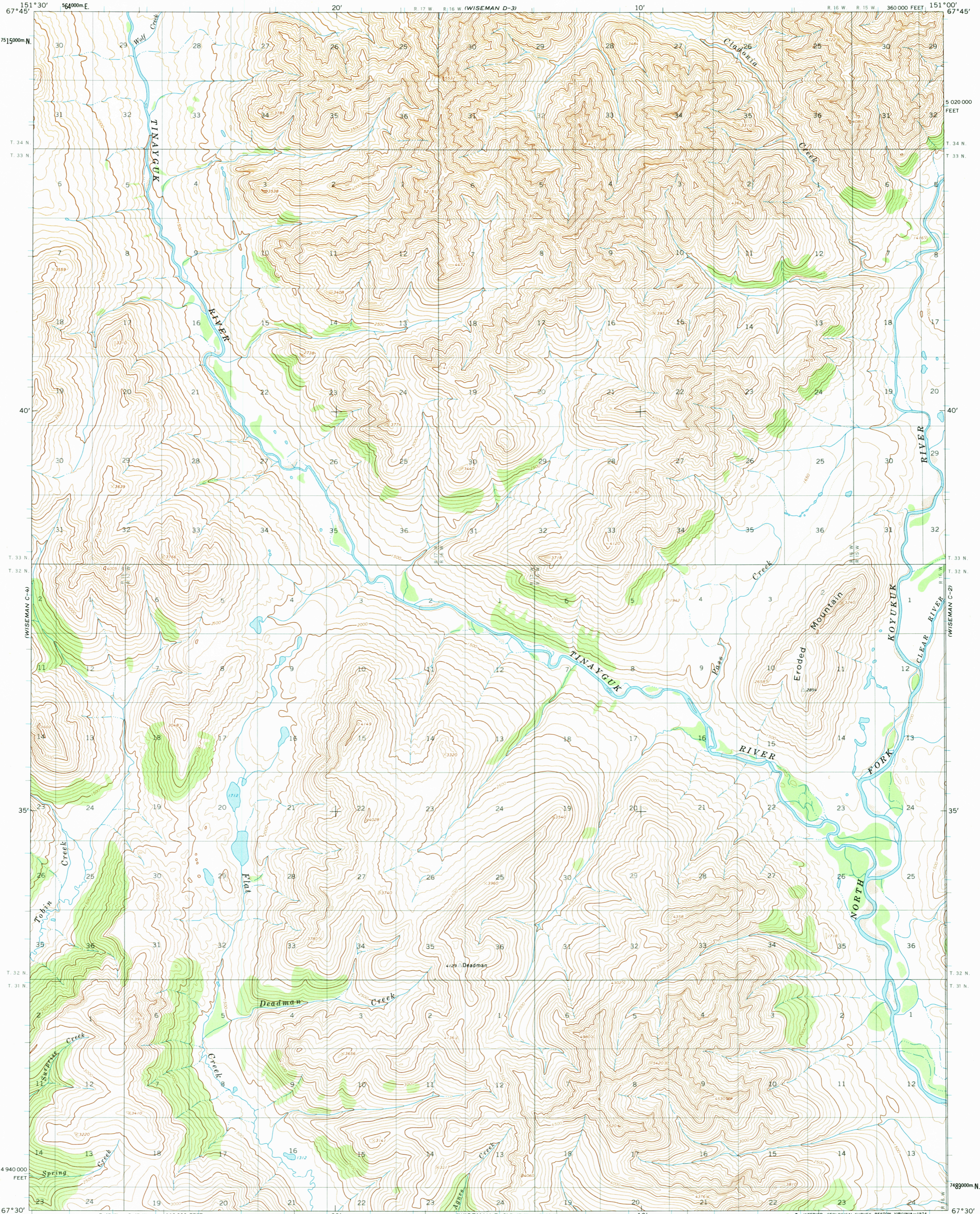
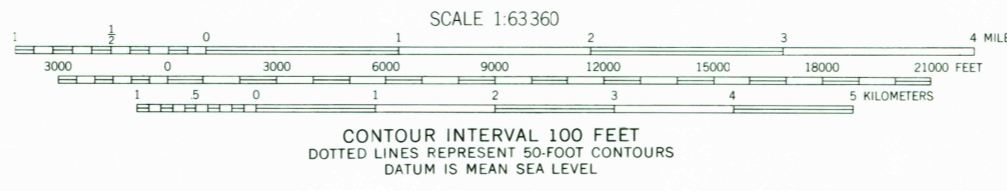
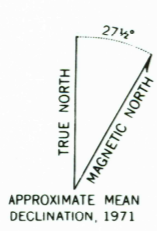


UNITED STATES
DEPARTMENT OF THE INTERIOR
GEOLOGICAL SURVEY

WISEMAN (C-3) QUADRANGLE
ALASKA
1:63 360 SERIES (TOPOGRAPHIC)



Map produced, edited, and published by the Geological Survey
Control by USGS and USC&GS
Topography by photogrammetric methods from aerial photographs
taken 1970, field annotated 1971. Map not field checked
Projection and 1000-meter grid ticks: Universal
Transverse Mercator, zone 5
10,000-foot grid ticks based on Alaska coordinate
system, zone 4. 1927 North American datum
Land lines represent unsurveyed and unmarked locations
determined by the Bureau of Land Management
Folios F-3 and F-4, Fairbanks Meridian



ROAD CLASSIFICATION
No roads or trails in this area

FOR SALE BY U. S. GEOLOGICAL SURVEY
FAIRBANKS, ALASKA 99701, DENVER, COLORADO 80225, OR RESTON, VIRGINIA 22092
A FOLDER DESCRIBING TOPOGRAPHIC MAPS AND SYMBOLS IS AVAILABLE ON REQUEST

WISEMAN (C-3), ALASKA
N6730-W15100/15 X 30

USGS
Historical File
Topographic Division

1971

NOV 0 4 1974

4150