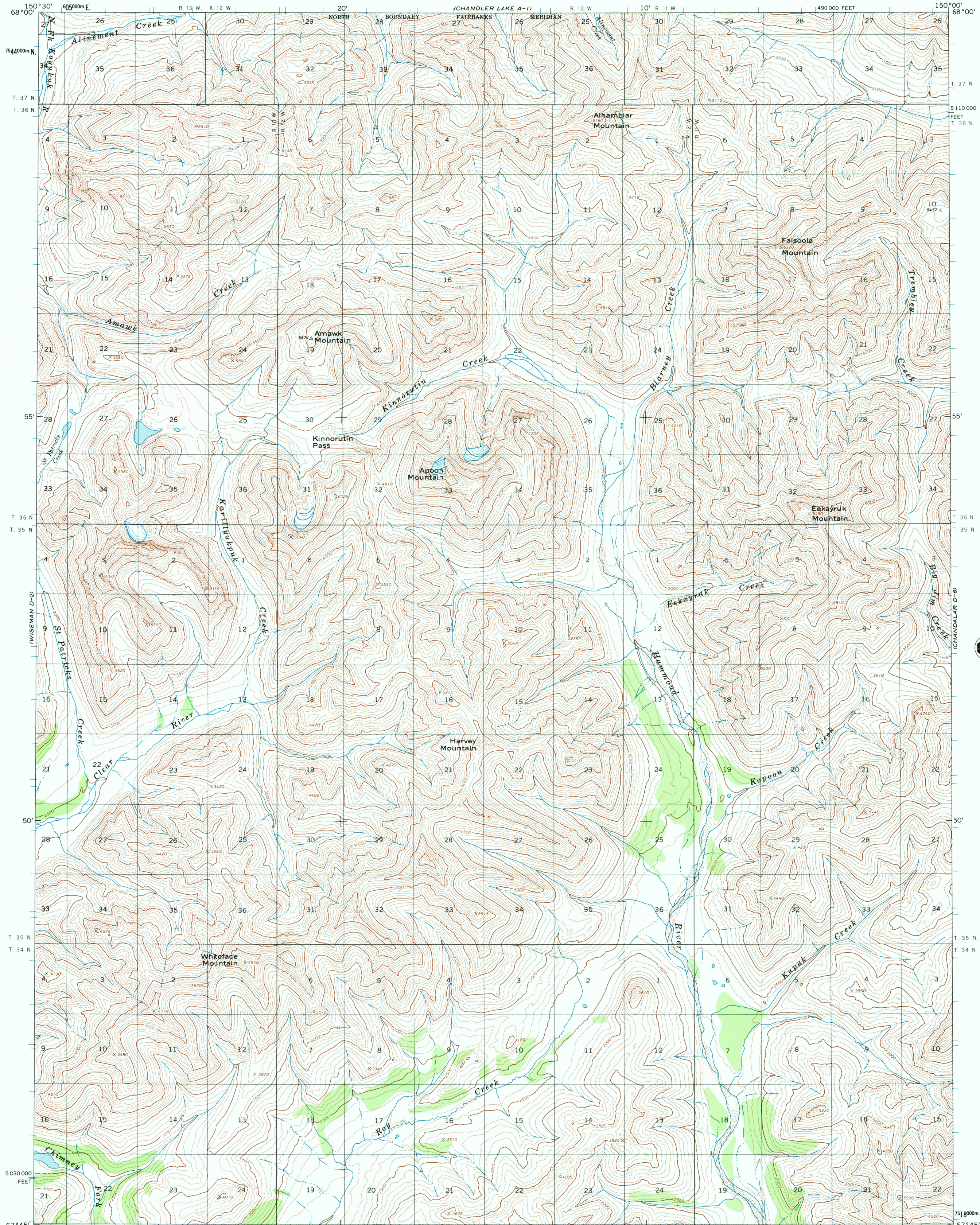




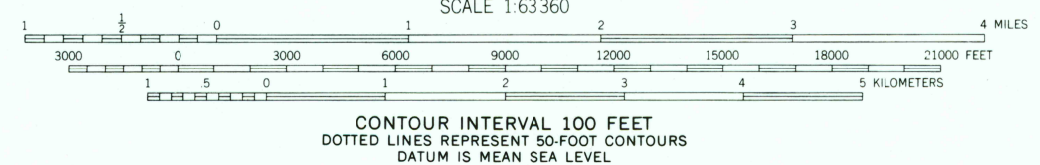
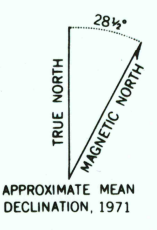
U.S. DEPARTMENT OF THE INTERIOR
U.S. GEOLOGICAL SURVEY

WISEMAN (D-1) QUADRANGLE
ALASKA
1:63 360 SERIES (TOPOGRAPHIC)



RECEIVED
DEC 31 2000
USGS NMD
HISTORICAL MAP ARCHIVES

Mapped, edited, and published by the Geological Survey
Control by USGS and USC&GS
Topography by photogrammetric methods from aerial photographs
taken 1970, field annotated 1971. Map not field checked
Projection and 1000-meter grid ticks: Universal
Transverse Mercator, zone 5
10,000-foot grid ticks based on Alaska coordinate
system, zone 4. 1927 North American datum
Land lines represent unsurveyed and unmarked locations
predetermined by the Bureau of Land Management
Folio F-3, Fairbanks Meridian



ROAD CLASSIFICATION
No roads or trails in this area

WISEMAN (D-1), ALASKA
N6745—W15000/15 X 30
1971

FOR SALE BY U.S. GEOLOGICAL SURVEY, P.O. BOX 25286, DENVER, COLORADO 80225
A FOLDER DESCRIBING TOPOGRAPHIC MAPS AND SYMBOLS IS AVAILABLE ON REQUEST

