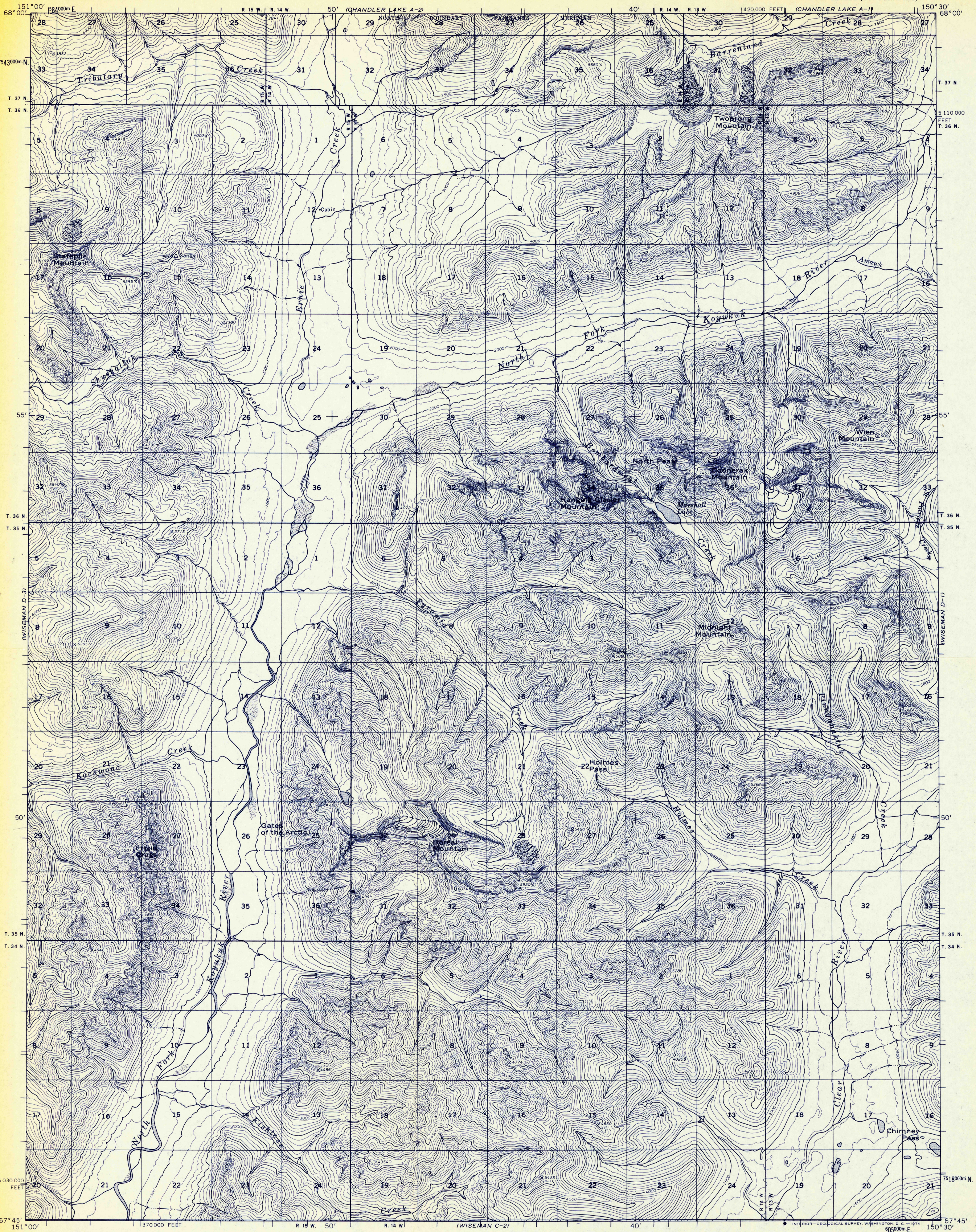


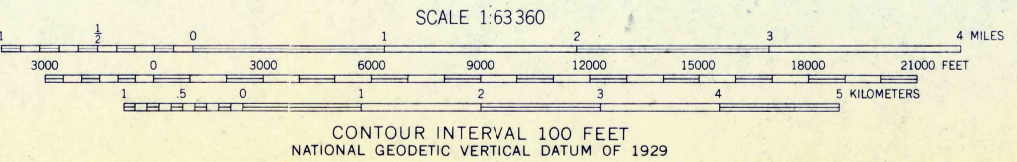
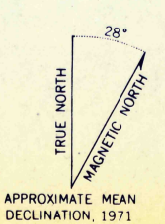
ADVANCE PROOF
SUBJECT TO CORRECTION
SCALE 1:63,360
F

UNITED STATES
DEPARTMENT OF THE INTERIOR
GEOLOGICAL SURVEY

WISEMAN (D-2) QUADRANGLE
ALASKA
1:63 360 SERIES (TOPOGRAPHIC)



Mapped, edited, and published by the Geological Survey
Control by USGS and USC&GS
Topography by photogrammetric methods from aerial photographs taken 1970, field annotated 1971. Map not field checked
Projection and 1,000-meter grid ticks: Universal Transverse Mercator, zone 5
10,000-foot grid ticks based on Alaska coordinate system, zone 4. 1927 North American datum
Land lines represent unsurveyed and unmarked locations predetermined by the Bureau of Land Management
Folio F-3, Fairbanks Meridian



ROAD CLASSIFICATION
No roads or trails in this area



FOR SALE BY U. S. GEOLOGICAL SURVEY
FAIRBANKS, ALASKA 99701, DENVER, COLORADO 80225, OR WASHINGTON, D. C. 20242
A FOLDER DESCRIBING TOPOGRAPHIC MAPS AND SYMBOLS IS AVAILABLE ON REQUEST

WISEMAN (D-2), ALASKA
N6745-W15030/15 X 30

1971

Wiseman D-2, No. 1
Rettles "A" Prof. No. 2815
WS D-6
FM Link