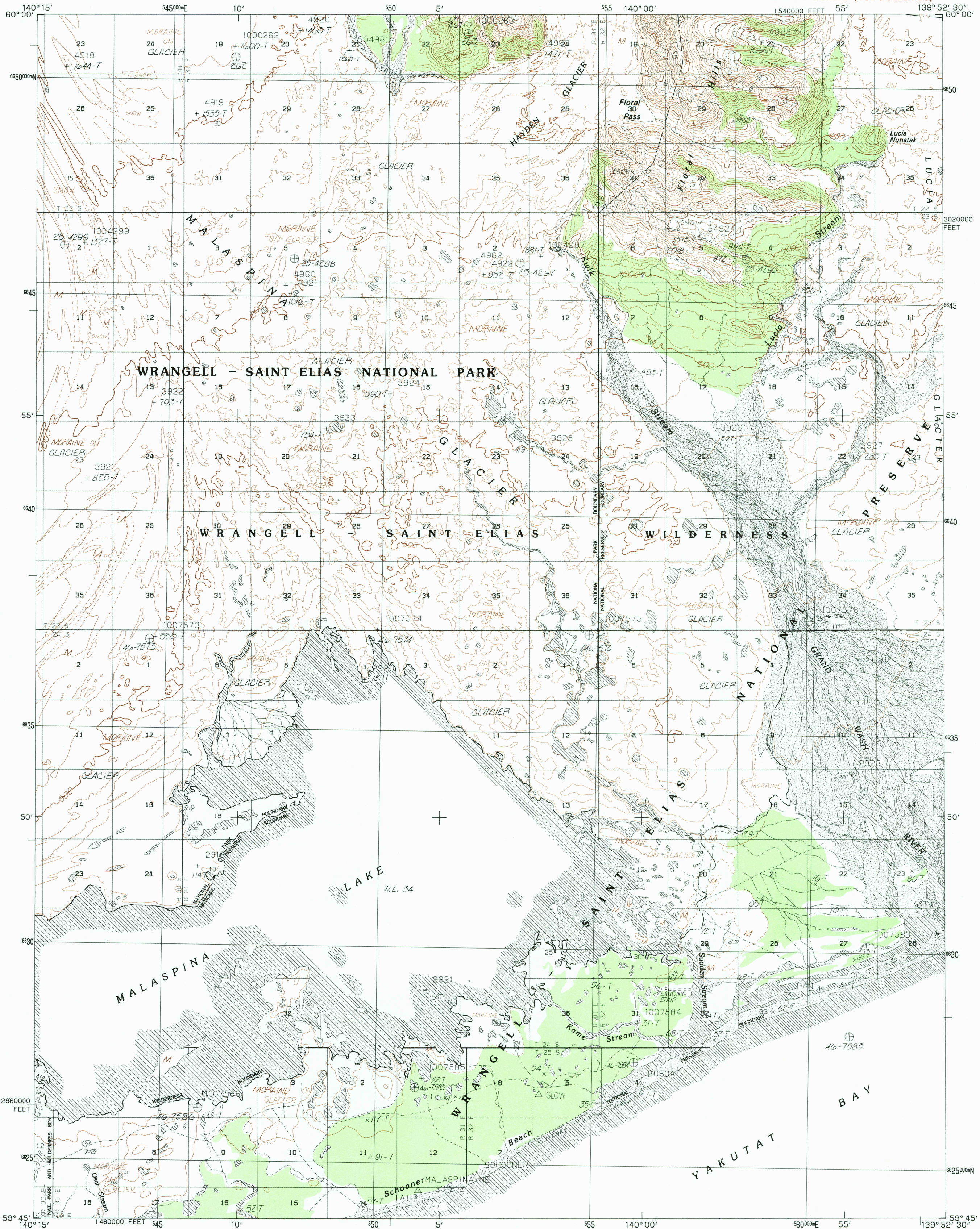


UNITED STATES
DEPARTMENT OF THE INTERIOR
GEOLOGICAL SURVEY

YAKUTAT (D-6) QUADRANGLE
ALASKA
1:63 360 SERIES (TOPOGRAPHIC)



PRODUCED BY THE UNITED STATES GEOLOGICAL SURVEY
CONTROL BY USGS, NOS/NOAA
COMPILED FROM AERIAL PHOTOGRAPHS TAKEN 1972 AND 1973
MAP NOT FIELD CHECKED. MAP EDITED 1985
PROJECTION: UNIVERSAL TRANSVERSE MERCATOR
GRID: 5000-METER UNIVERSAL TRANSVERSE MERCATOR ZONE 1
20,000-FOOT STATE GRID TICKS ALASKA, ZONE 1
UTM GRID DECLINATION 049° EAST
1985 MAGNETIC NORTH DECLINATION 27° EAST
VERTICAL DATUM NATIONAL GEODETIC VERTICAL DATUM OF 1929
HORIZONTAL DATUM 1927 NORTH AMERICAN DATUM
To place on the predicted North American Datum of 1983, move the
projection lines 37 meters north and 99 meters east
Land lines represent unsurveyed and unmarked locations prede-
termined by the Bureau of Land Management, Folio CR-9, Cooper River
Meridian
There may be private inholdings within the boundaries of any Federal
and State reservations shown on this map
Federal reservation boundaries established by the Alaska National
Interest Lands Conservation Act, PL 96-487, Dec. 2, 1980, are shown
as compiled by the administering agencies
The Alaska Maritime National Wildlife Refuge consists of all the public
lands in the coastal waters and adjacent seas of Alaska consisting
of islands, islets, rocks, reefs, coves and spires, as well
as designated mainland areas

PROVISIONAL MAP
Produced from original
manuscript drawings. Infor-
mation shown as of date of
photography.

All streams and lakes are perennial

To convert meters to feet multiply by 3.2808
To convert feet to meters multiply by .3048

FOR SALE BY U.S. GEOLOGICAL SURVEY, FAIRBANKS, ALASKA 99701
DENVER COLORADO 80225, OR RESTON, VIRGINIA 22092

1	2	3	1 Mt. St. Elias (A-7)
4	5	2 Mt. St. Elias (A-8)	3 Mt. St. Elias (A-9)
6	7	4 Yakutat (D-7)	5 Yakutat (D-8)
8	8	6 Yakutat (C-7)	7 Yakutat (C-8)
		8 Yakutat (C-9)	

ADJOINING QUADRANGLE NAMES

YAKUTAT (D-6), ALASKA
PROVISIONAL EDITION 1985
N5945-W13952.5/15X22.5