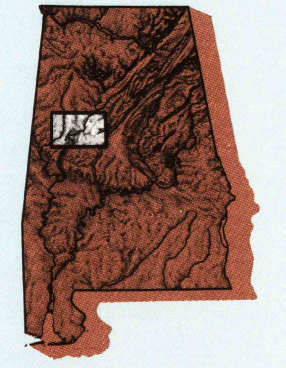


TUSCALOOSA, ALABAMA

30 X 60 MINUTE SERIES (PLANIMETRIC)

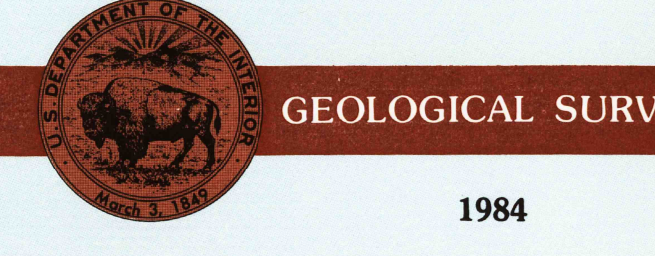
# Tuscaloosa ALABAMA

1:100 000-scale planimetric map



30 X 60 MINUTE QUADRANGLE SHOWING

- Elevations in meters
- Highways, roads and other manmade structures
- Water features
- Woodland areas
- Geographic names



Produced by the United States Geological Survey  
 Compiled from USGS 1:24 000-scale topographic maps dated 1967-1980. Planimetry revised from aerial photographs taken 1981 and other source data. Revised information not field checked. Map edited 1984.  
 Projection and 10 000-meter grid, zone 16: Universal Transverse Mercator  
 25 000-foot grid ticks based on Alabama coordinate system, west zone  
 1927 North American Datum  
 To place on the predicted North American Datum 1983 move the projection lines 10 meters south  
 There may be private subdivisions within the boundaries of the National or State reservations shown on this map

NATIONAL GEODETIC VERTICAL DATUM OF 1929 ELEVATIONS SHOWN TO THE NEAREST METER

**USGS NMD HISTORICAL MAP**  
 THIS MAP COMPLIES WITH NATIONAL MAP ACCURACY STANDARDS  
 NOV 6 1987  
**REC'D FILE COPY**

CONVERSION TABLE		DECLINATION DIAGRAM		ADJOINING MAPS	
Meters	Feet	°18 MALES		1 2 3	
1	3.2808				
2	6.5617				
3	9.8425				
4	13.1234				
5	16.4042				
6	19.6850				
7	22.9659				
8	26.2467				
9	29.5275				
10	32.8084				

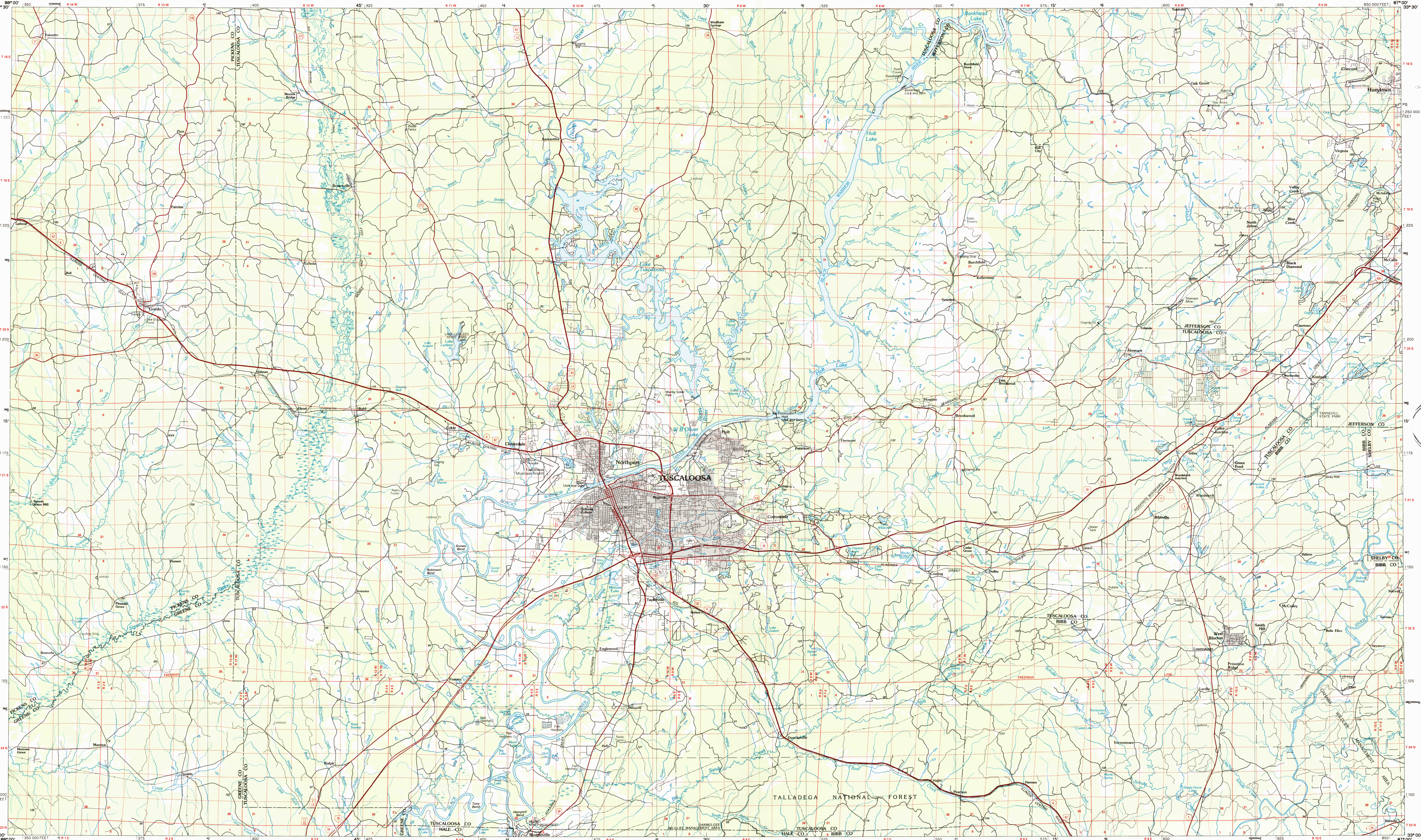
To convert meters to feet multiply by 3.2808  
 To convert feet to meters multiply by 0.3048  
 UTM grid convergence (GM) and 1984 magnetic declination (MD) at center of map  
 Diagram is approximate

FOR SALE BY U. S. GEOLOGICAL SURVEY RESTON, VIRGINIA 22092

### Topographic Map Symbols

- Primary highway, hard surface
- Secondary highway, hard surface
- Light duty road, principal street, hard or improved surface
- Other road or street; trail
- Road marker: Interstate, U. S., State
- Railroad: standard gage; narrow gage
- Bridge, overpass, underpass
- Tunnel: road; railroad
- Built up area; locality; elevation
- Airport; landing field; landing strip
- Natural boundary
- State boundary
- County boundary
- National or State reservation boundary
- Land grant boundary
- U. S. public lands survey: range, township, section
- Railroad: boundary; section line; constructed
- Power transmission line; pipeline
- Dam; dam with lock
- Cemetery; building
- Windmill; water well; spring
- Mine shaft; adit or cave; mine; quarry; gravel pit
- Campground; picnic area; U. S. location monument
- Ruins; off dwelling
- Distorted surface: strip mine, levee, sand
- Contours: index; intermediate; supplementary
- Barometric contours: index; intermediate
- Stream, lake; perennial; intermittent
- Rapids, large and small; falls, large and small
- Area to be submerged; marsh, swamp
- Land subject to controlled inundation; woodland
- Sorb; mangrove
- Ditch; viaduct

A pamphlet describing topographic maps is available on request



INTERIOR-GEOLOGICAL SURVEY, RESTON, VIRGINIA-1984

SCALE 1:100 000

1 CENTIMETER ON THE MAP REPRESENTS 1 KILOMETER ON THE GROUND

0 1 2 3 4 5 6 7 8 9 10 11 12 13 14 15 16 17 18 19 20 KILOMETERS

0 1000 2000 3000 4000 5000 6000 7000 8000 9000 10000 15000 20000 METERS

0 1 2 3 4 5 6 7 8 9 10 11 12 13 14 15 16 17 18 19 20 MILES

0 1000 2000 3000 4000 5000 6000 7000 8000 9000 10000 15000 20000 FEET

TUSCALOOSA, ALABAMA 33087-A1-PL-100