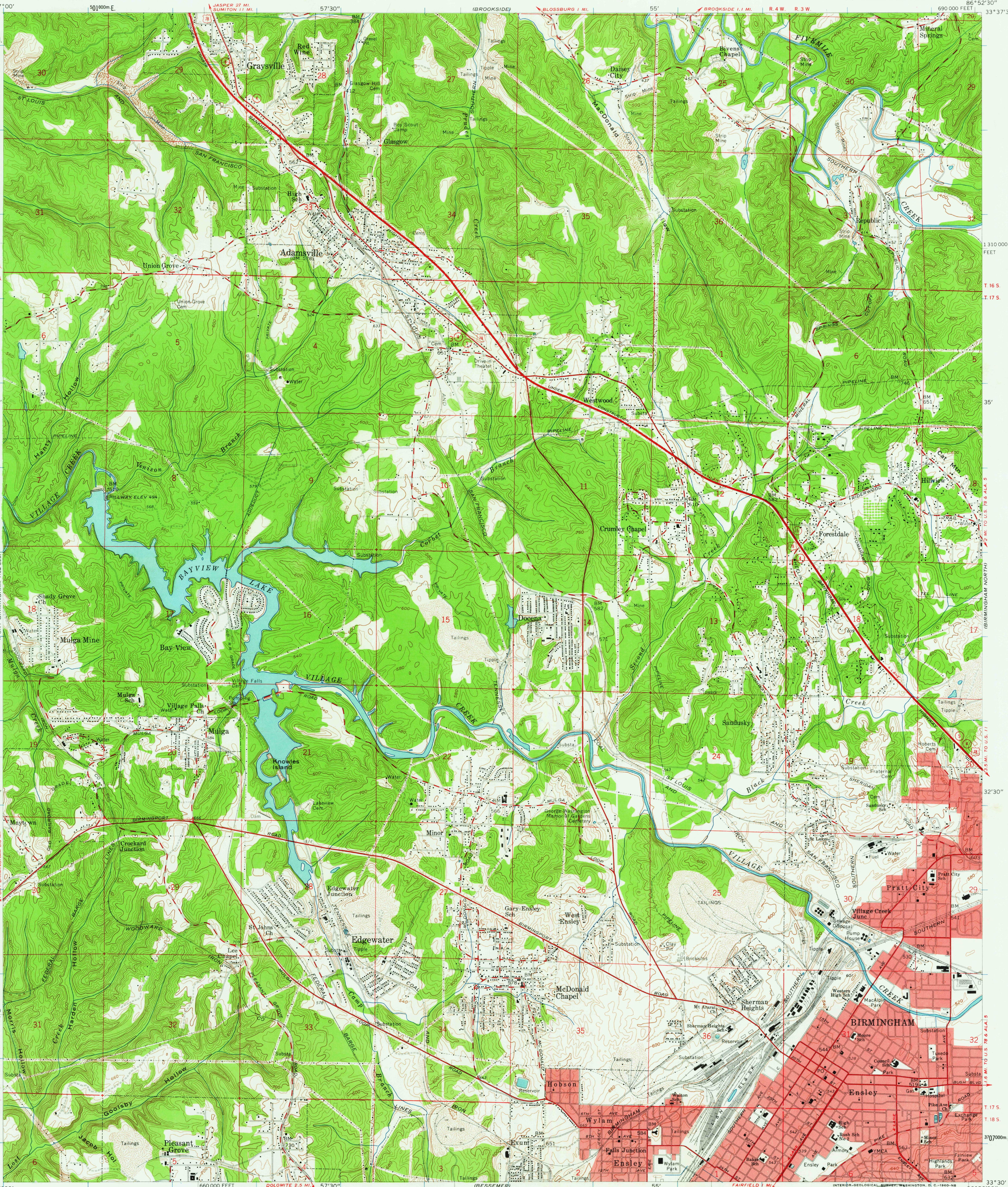


UNITED STATES  
DEPARTMENT OF THE INTERIOR  
GEOLOGICAL SURVEY

ADAMSVILLE QUADRANGLE  
ALABAMA—JEFFERSON CO.  
7.5 MINUTE SERIES (TOPOGRAPHIC)



Mapped, edited, and published by the Geological Survey  
Control by USGS, USC&GS, USCE, and Alabama Geodetic Survey  
Topography from aerial photographs by photogrammetric methods  
Aerial photographs taken 1957 Field check 1959  
Polyconic projection, 1927 North American datum  
10,000-foot grid based on Alabama coordinate system, west zone  
1000-meter Universal Transverse Mercator grid ticks,  
zone 16, shown in blue  
Red tint indicates areas in which only  
landmark buildings are shown

TRUE NORTH  
MAGNETIC NORTH  
APPROXIMATE MEAN  
DECLINATION, 1959

SCALE 1:24,000  
1 1000 0 1000 2000 3000 4000 5000 6000 7000 FEET  
1 MILE  
0 5 10 KILOMETER  
CONTOUR INTERVAL 20 FEET  
DATUM IS MEAN SEA LEVEL

THIS MAP COMPLIES WITH NATIONAL MAP ACCURACY STANDARDS  
FOR SALE BY U. S. GEOLOGICAL SURVEY, WASHINGTON 25, D. C.  
A FOLDER DESCRIBING TOPOGRAPHIC MAPS AND SYMBOLS IS AVAILABLE ON REQUEST



U.S.G.S.  
FILE COPY  
TOPOGRAPHIC DIVISION  
HISTORICAL

ROAD CLASSIFICATION  
Heavy-duty ——— Light-duty ———  
Medium-duty ——— Unimproved dirt ———  
U.S. Route ——— State Route ———

ADAMSVILLE, ALA.  
SW/4 BIRMINGHAM COAL DISTRICT 15 QUADRANGLE  
N3330—WB652.5/7.5

1959

3840