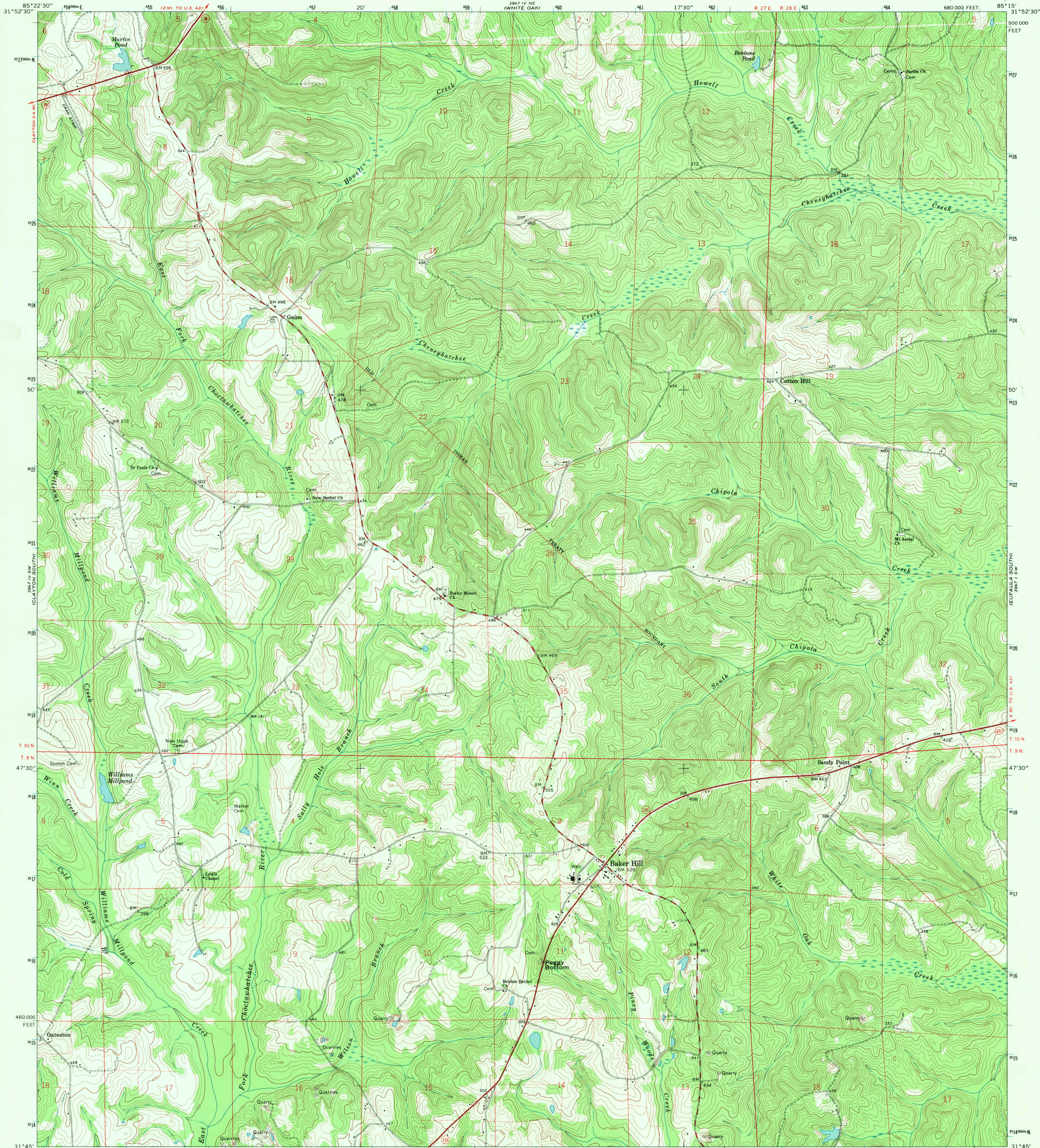


UNITED STATES
DEPARTMENT OF THE INTERIOR
GEOLOGICAL SURVEY

BAKER HILL QUADRANGLE
ALABAMA—BARBOUR CO.
7.5 MINUTE SERIES (TOPOGRAPHIC)



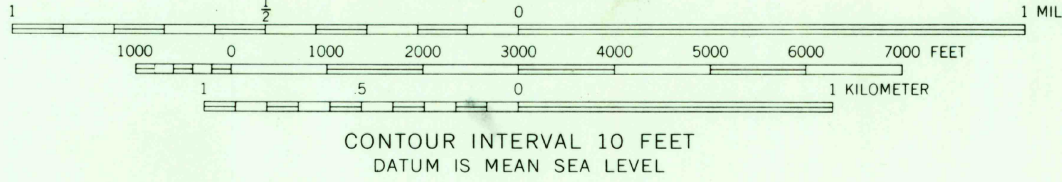
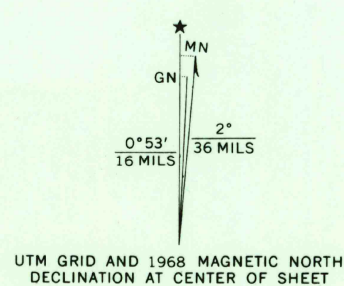
Mapped, edited, and published by the Geological Survey

Control by USGS and USC&GS

Topography by photogrammetric methods from aerial photographs taken 1965. Field checked 1968

Polyconic projection. 1927 North American datum
10,000 foot grid based on Alabama coordinate system, east zone
1000-meter Universal Transverse Mercator grid ticks, zone 16, shown in blue

Fine red dashed lines indicate selected fence and field lines where generally visible on aerial photographs. This information is unchecked



USGS
Historical File
Topographic Division

ROAD CLASSIFICATION
Primary highway, all weather, hard surface
Light-duty road, all weather, improved surface
Secondary highway, all weather, unimproved road, fair or dry weather
State Route



U.S.G.S.
FILE COPY
TOPOGRAPHIC DIVISION

BAKER HILL, ALA.
N3145—W8515/7.5

1968

AMS 3947 IV SE—SERIES V844

THIS MAP COMPLIES WITH NATIONAL MAP ACCURACY STANDARDS
FOR SALE BY U. S. GEOLOGICAL SURVEY, WASHINGTON, D. C. 20242
A FOLDER DESCRIBING TOPOGRAPHIC MAPS AND SYMBOLS IS AVAILABLE ON REQUEST

NOV 9 1970