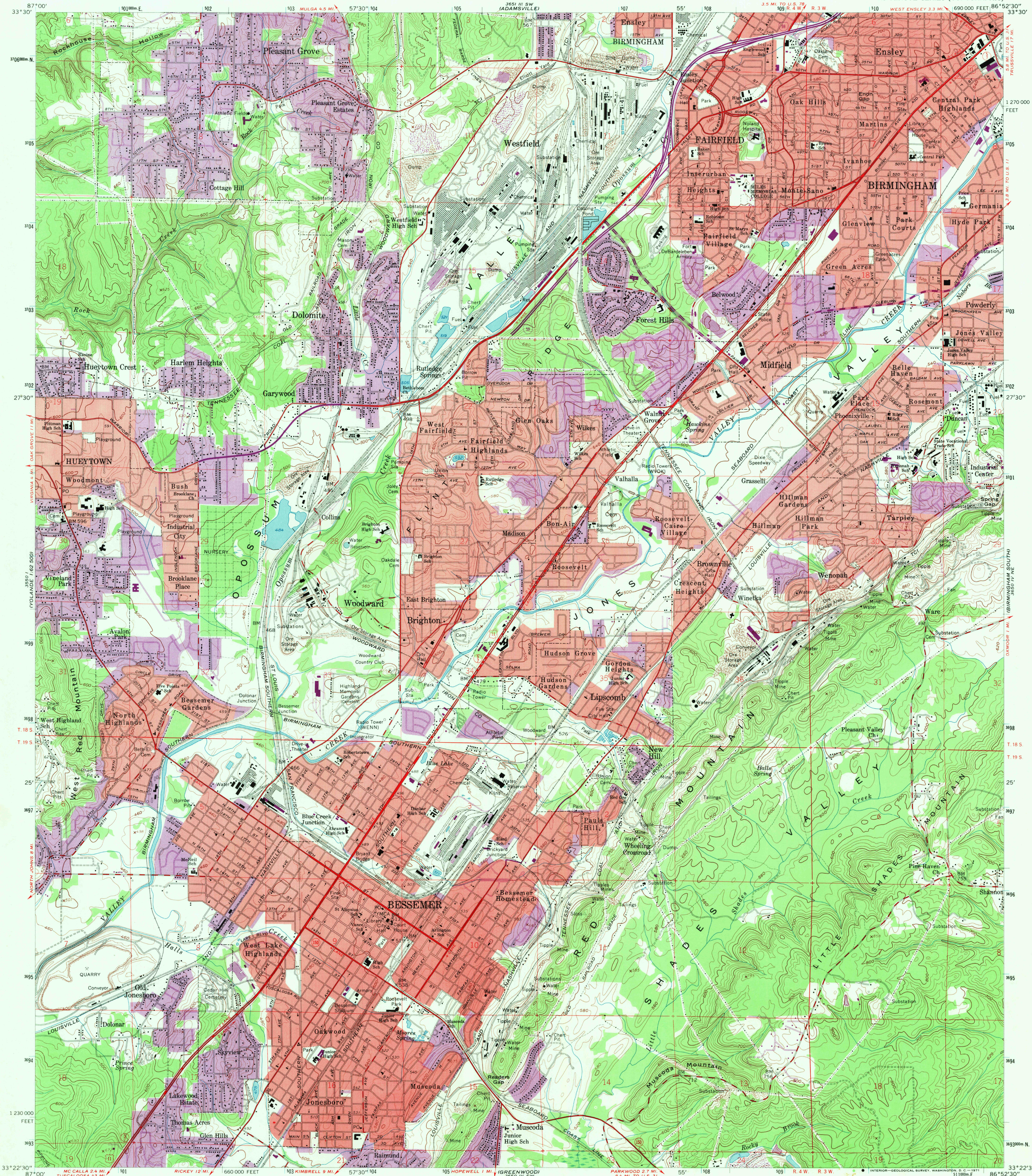


UNITED STATES  
DEPARTMENT OF THE INTERIOR  
GEOLOGICAL SURVEY

BESSEMER QUADRANGLE  
ALABAMA-JEFFERSON CO.  
7.5 MINUTE SERIES (TOPOGRAPHIC)



Mapped, edited, and published by the Geological Survey  
Control by USGS, USC&GS, and USCE  
Topography from aerial photographs by photogrammetric methods  
Aerial photographs taken 1957. Field check 1959  
Polyconic projection. 1927 North American datum  
10,000-foot grid based on Alabama coordinate system, west zone  
1000-meter Universal Transverse Mercator grid ticks,  
zone 16, shown in blue  
Red tint indicates areas in which only landmark buildings  
are shown  
Revisions shown in purple compiled from aerial photographs  
taken 1970. This information not field checked  
Purple tint indicates extension of urban areas

UTM GRID AND 1970 MAGNETIC NORTH  
DECLINATION AT CENTER OF SHEET

SCALE 1:24,000  
CONTOUR INTERVAL 20 FEET  
DATUM IS MEAN SEA LEVEL



ROAD CLASSIFICATION  
Heavy-duty ——— Light-duty ———  
Medium-duty ——— Unimproved dirt ———  
Interstate Route ——— U.S. Route ——— State Route ———

BESSEMER, ALA.  
N33225-W8652.5/7.5  
1959  
PHOTOREVISED 1970  
AMS 5650 IV NW-SERIES 5/7.5

USGS  
HISTORICAL FILE  
TOPOGRAPHIC DIVISION  
3670  
SEP 3 1971  
USGS  
HISTORICAL FILE  
TOPOGRAPHIC DIVISION