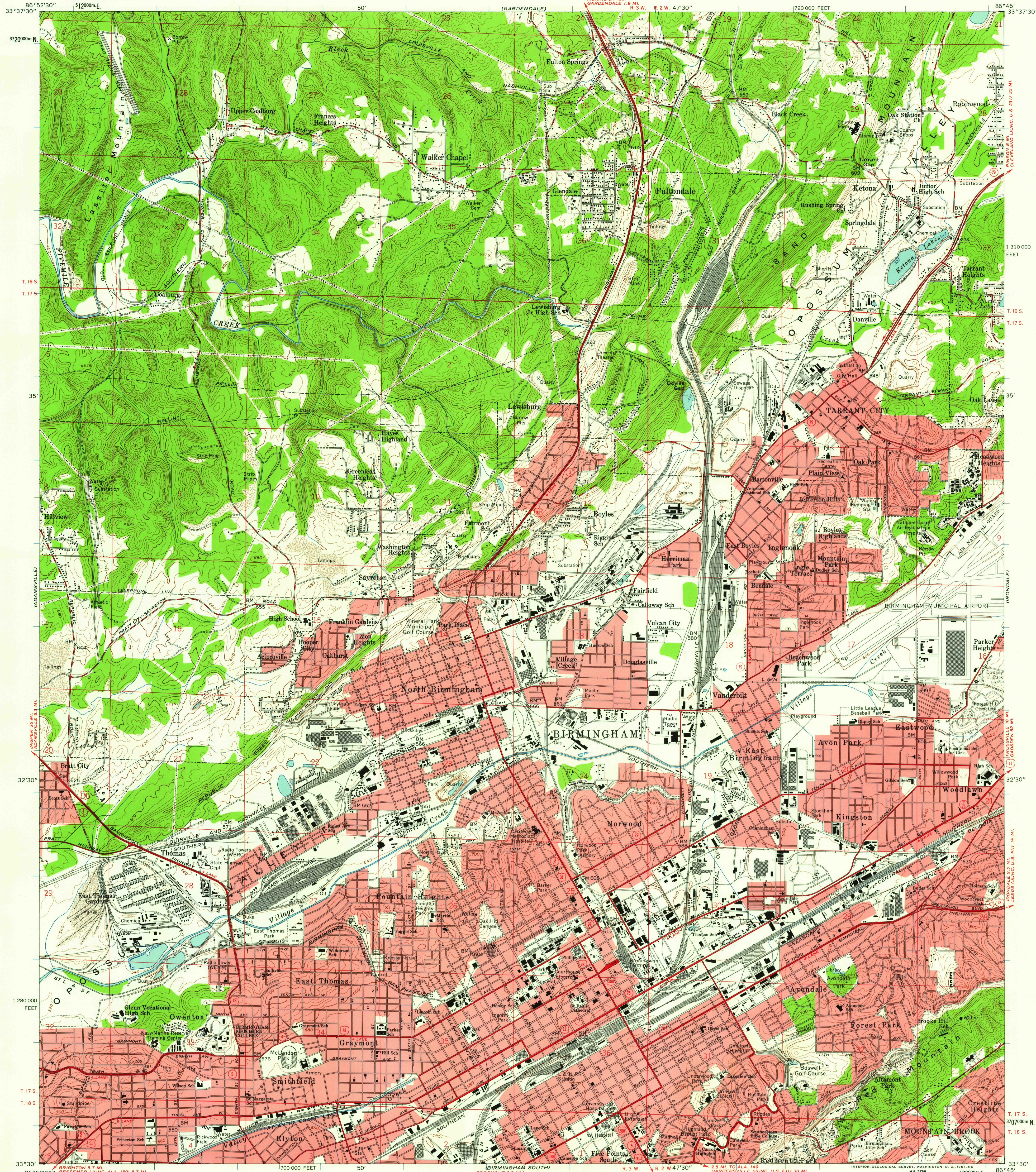


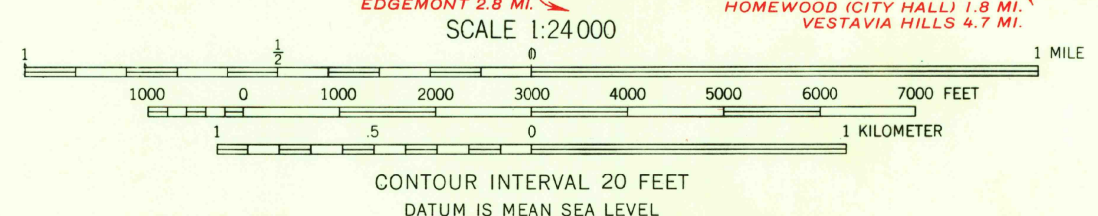
UNITED STATES
DEPARTMENT OF THE INTERIOR
GEOLOGICAL SURVEY

BIRMINGHAM NORTH QUADRANGLE
ALABAMA-JEFFERSON CO.
7.5 MINUTE SERIES (TOPOGRAPHIC)
SE/4 BIRMINGHAM COAL DISTRICT 15 QUADRANGLE



Mapped, edited, and published by the Geological Survey
Control by USGS, USC&GS, USCE, and Alabama Geodetic Survey
Topography from aerial photographs by photogrammetric methods
Aerial photographs taken 1957. Field check 1959
Polyconic projection. 1927 North American datum
10,000-foot grid based on Alabama coordinate system, west zone
1000-meter Universal Transverse Mercator grid ticks,
zone 16, shown in blue
Red tint indicates areas in which only
landmark buildings are shown

TRUE NORTH
MAGNETIC NORTH
APPROXIMATE MEAN
DECLINATION, 1959



THIS MAP COMPLIES WITH NATIONAL MAP ACCURACY STANDARDS
FOR SALE BY U. S. GEOLOGICAL SURVEY, WASHINGTON 25, D. C.
A FOLDER DESCRIBING TOPOGRAPHIC MAPS AND SYMBOLS IS AVAILABLE ON REQUEST

USGS
Historical File
Topographic Division
QUADRANGLE LOCATION

ROAD CLASSIFICATION
Heavy-duty ——— Light-duty ———
Medium-duty ——— Unimproved dirt, ———
U.S. Route ——— State Route ———

U.S.G.S.
COPY
HISTORICAL

BIRMINGHAM NORTH, ALA.
SE/4 BIRMINGHAM COAL DISTRICT 15 QUADRANGLE
N3300-WB645/7.5

1959

FEB 2 1961

4060