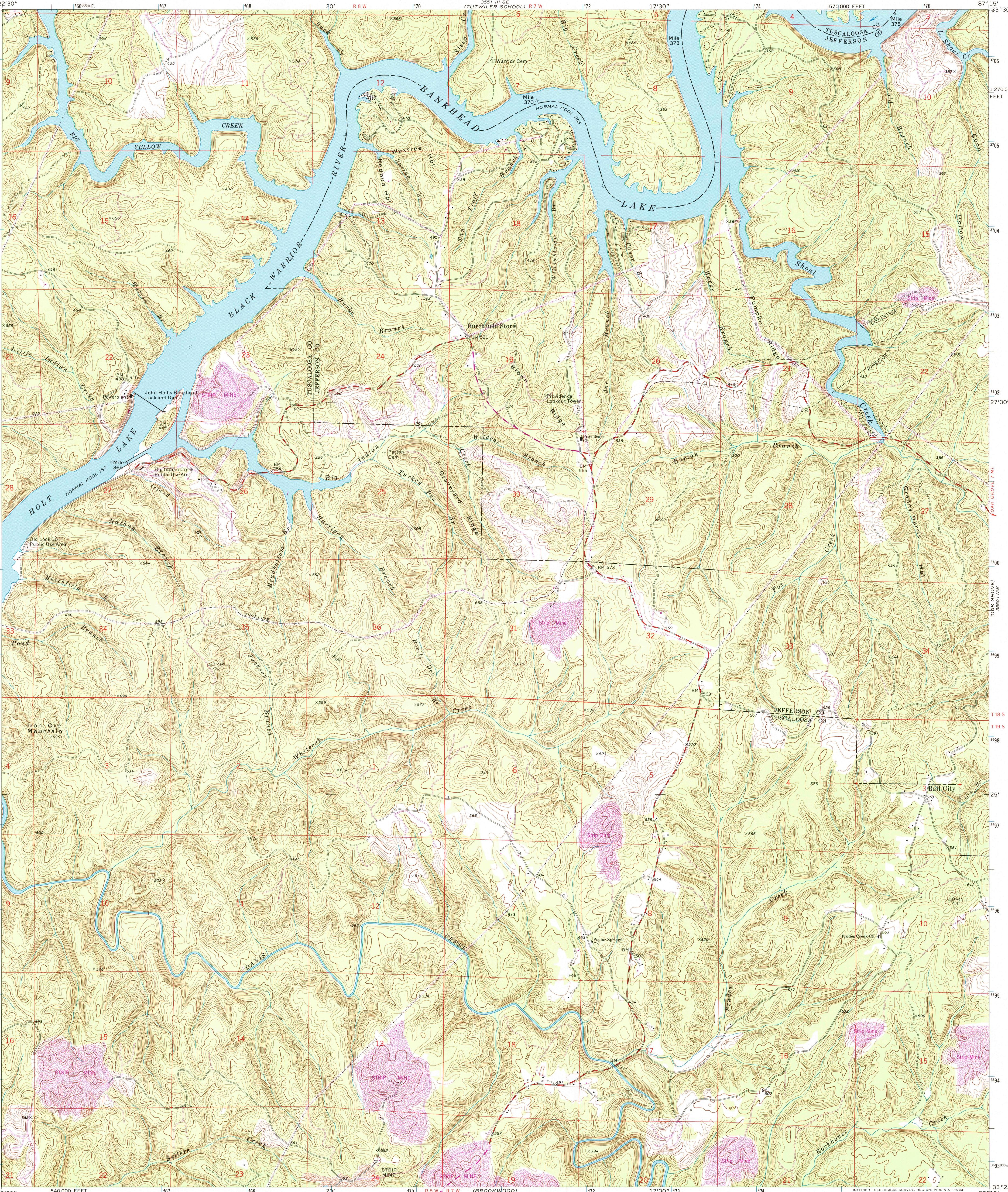




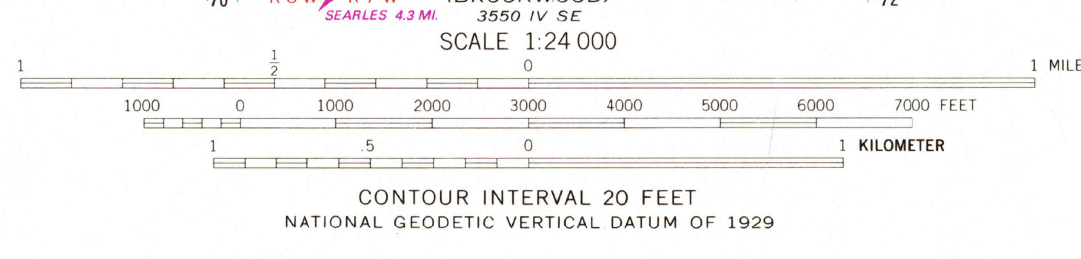
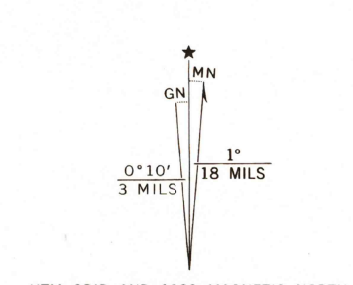
UNITED STATES
DEPARTMENT OF THE INTERIOR
GEOLOGICAL SURVEY

STATE OF ALABAMA
GEOLOGICAL SURVEY OF ALABAMA

BURCHFIELD STORE QUADRANGLE
ALABAMA
7.5 MINUTE SERIES (TOPOGRAPHIC)



Mapped, edited, and published by the Geological Survey
Control by USGS and NOS/NOAA
Topography by photogrammetric methods from aerial photographs taken 1974. Field checked 1974
Projection and 10,000-foot grid ticks: Alabama coordinate system, west zone (transverse Mercator)
1000-meter Universal Transverse Mercator grid ticks, zone 16, shown in blue. 1927 North American Datum. To place on the predicted North American Datum 1983 move the projection lines 10 meters south as shown by dashed corner ticks
Fine red dashed lines indicate selected fence and field lines where generally visible on aerial photographs. This information is unchecked
Revisions shown in purple and woodland compiled from aerial photographs taken 1981 and other sources
This information not field checked. Map edited 1983



ROAD CLASSIFICATION
Primary highway, hard surface
Secondary highway, hard surface
Light-duty road, hard or improved surface
Unimproved road
Interstate Route
U. S. Route
State Route

RECEIVED
JAN 31 1999
USGS NMD
HISTORICAL MAP ARCHIVES

BURCHFIELD STORE, ALA.
N3322.5-W8715.7.5
1974
PHOTOREVISED 1983
DMA 3550 IV NE-SERIES Y844

