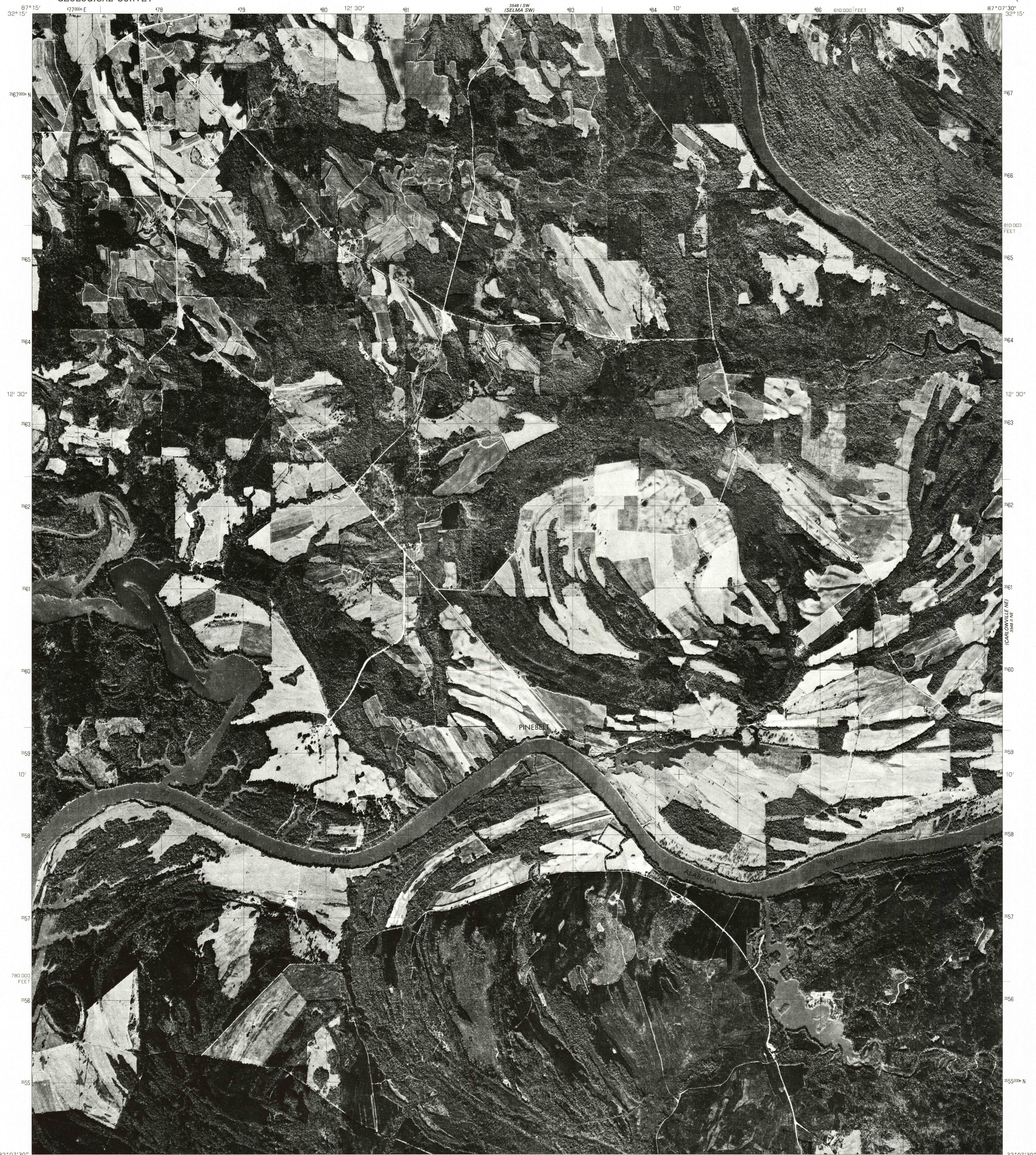
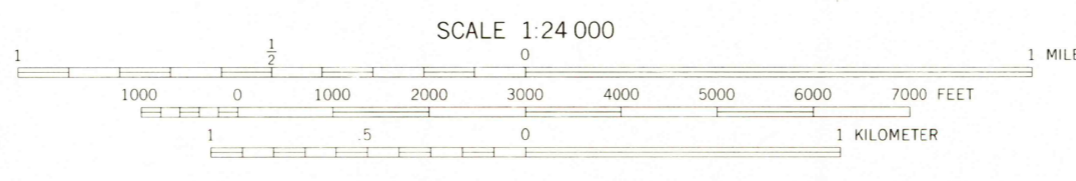
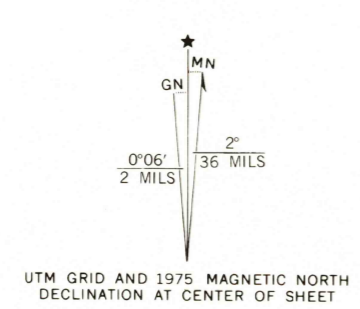


3548 SE
(SELMA SE)



Produced by the Geological Survey
Orthophoto prepared from 1:76,000-scale
aerial photograph taken November 27, 1975
Projection and 10,000-foot grid ticks: Alabama
coordinate system, (Transverse Mercator) west zone
1000-meter Universal Transverse Mercator grid,
zone 16, 1927 North American datum
Photom imagery transformed by scanning techniques
which may produce double or mismatched images;
use the mean of image positions for map point



PRINCIPAL NUMBERED HIGHWAYS
○ Interstate Route ○ U. S. Route ○ State Route

This quadrangle area also covered by NW quarter
of Carlowville 1:62,500-scale topographic map

USGS
Historical File
Topographic Division

SEP 13 1977
CARLOWVILLE NW, ALA. 1600
N3207.5-W8707.5/7.5

THIS MAP COMPLIES WITH NATIONAL MAP ACCURACY STANDARDS
FOR SALE BY U. S. GEOLOGICAL SURVEY, RESTON, VIRGINIA 22092

1975
AMS 3548 II NW—SERIES V044