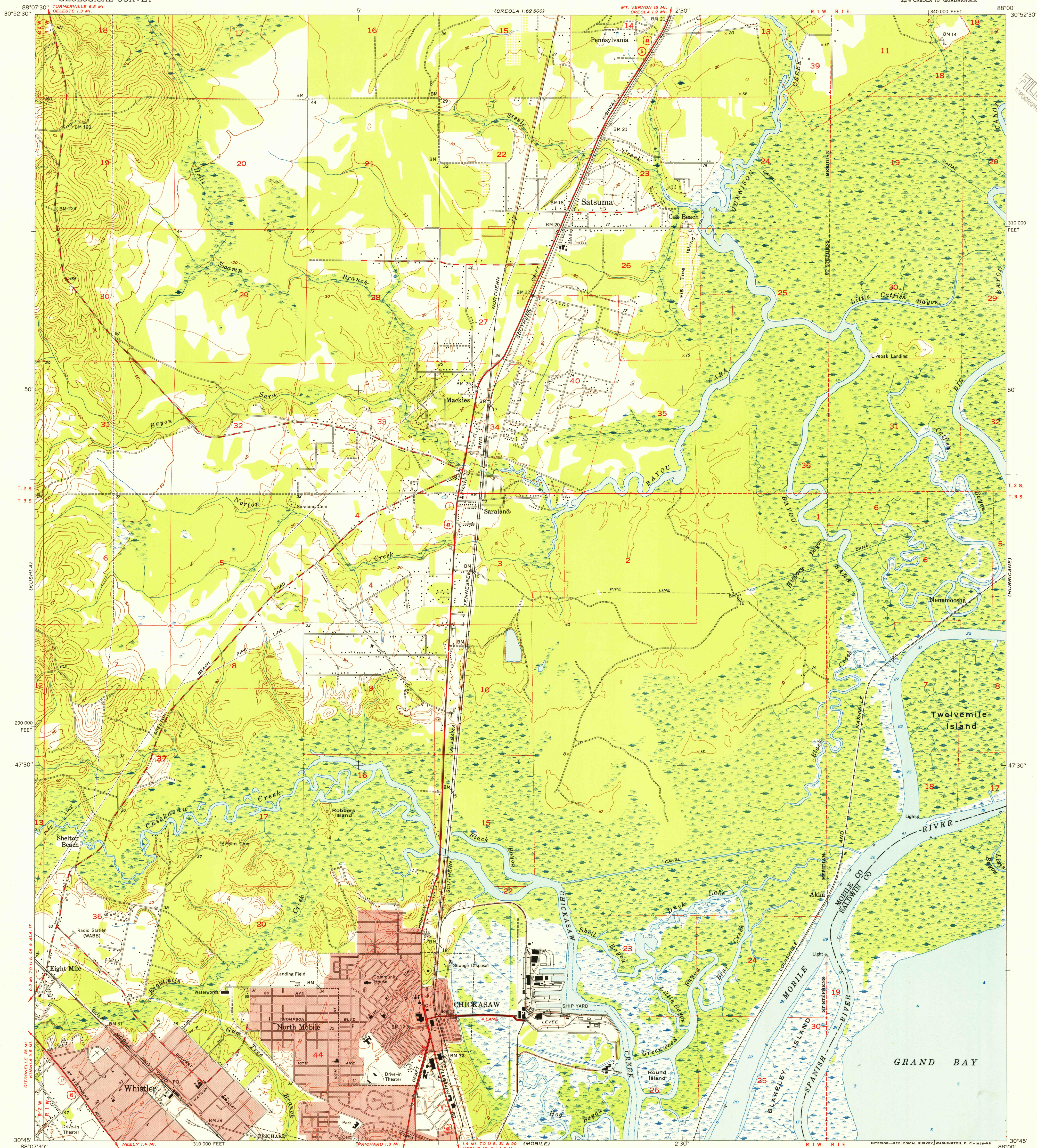


UNITED STATES
DEPARTMENT OF THE INTERIOR
GEOLOGICAL SURVEY

CHICKASAW QUADRANGLE
ALABAMA
7.5 MINUTE SERIES (TOPOGRAPHIC)
SE/4 CREOLA 15' QUADRANGLE



Mapped, edited, and published by the Geological Survey
Control by USGS, USC&GS, and Alabama Geodetic Survey
Culture and drainage in part compiled from aerial photographs
Topography by plane-table surveys 1938-1940, and in part by
Tennessee Coal, Iron and Railroad Co. Revised 1953
Hydrography compiled from USC&GS Chart 1266 (1:80,000)
Polyconic projection. 1927 North American datum
10,000-foot grid based on Alabama coordinate system,
west zone
Red tint indicates areas in which only
landmark buildings are shown
Dashed land lines indicate approximate locations
Certain land lines are omitted in T. 3 S.—R. 1 E. because of
insufficient data

TRUE NORTH
MAGNETIC NORTH
APPROXIMATE MEAN
DECLINATION, 1953

SCALE 1:24,000
1 0 1000 2000 3000 4000 5000 6000 7000 FEET
1 0 5 10 KILOMETER
CONTOUR INTERVAL 10 FEET
DATUM IS MEAN SEA LEVEL
DEPTH CURVES AND SOUNDINGS IN FEET DATUM IS MEAN LOW WATER
SHORELINE SHOWN REPRESENTS THE APPROXIMATE LINE OF MEAN HIGH WATER
THE MEAN RANGE OF TIDE IS APPROXIMATELY 1 FOOT
THIS MAP COMPLIES WITH NATIONAL MAP ACCURACY STANDARDS
FOR SALE BY U. S. GEOLOGICAL SURVEY, WASHINGTON 25, D. C.
A FOLDER DESCRIBING TOPOGRAPHIC MAPS AND SYMBOLS IS AVAILABLE ON REQUEST

USGS
Historical File
Topographic Division



ROAD CLASSIFICATION
Heavy-duty ——— 4 LANE 16 LANE Light-duty ———
Medium-duty ——— 4 LANE 16 LANE Unimproved dirt ———
U. S. Route State Route

U.S.G.S.
FILE COPY
TOPOGRAPHIC DIVISION
HISTORICAL

CHICKASAW, ALA.
SE/4 CREOLA 15' QUADRANGLE
N 3045—W 8800/7.5

1953 G1

MAR 4 - 1955

2615