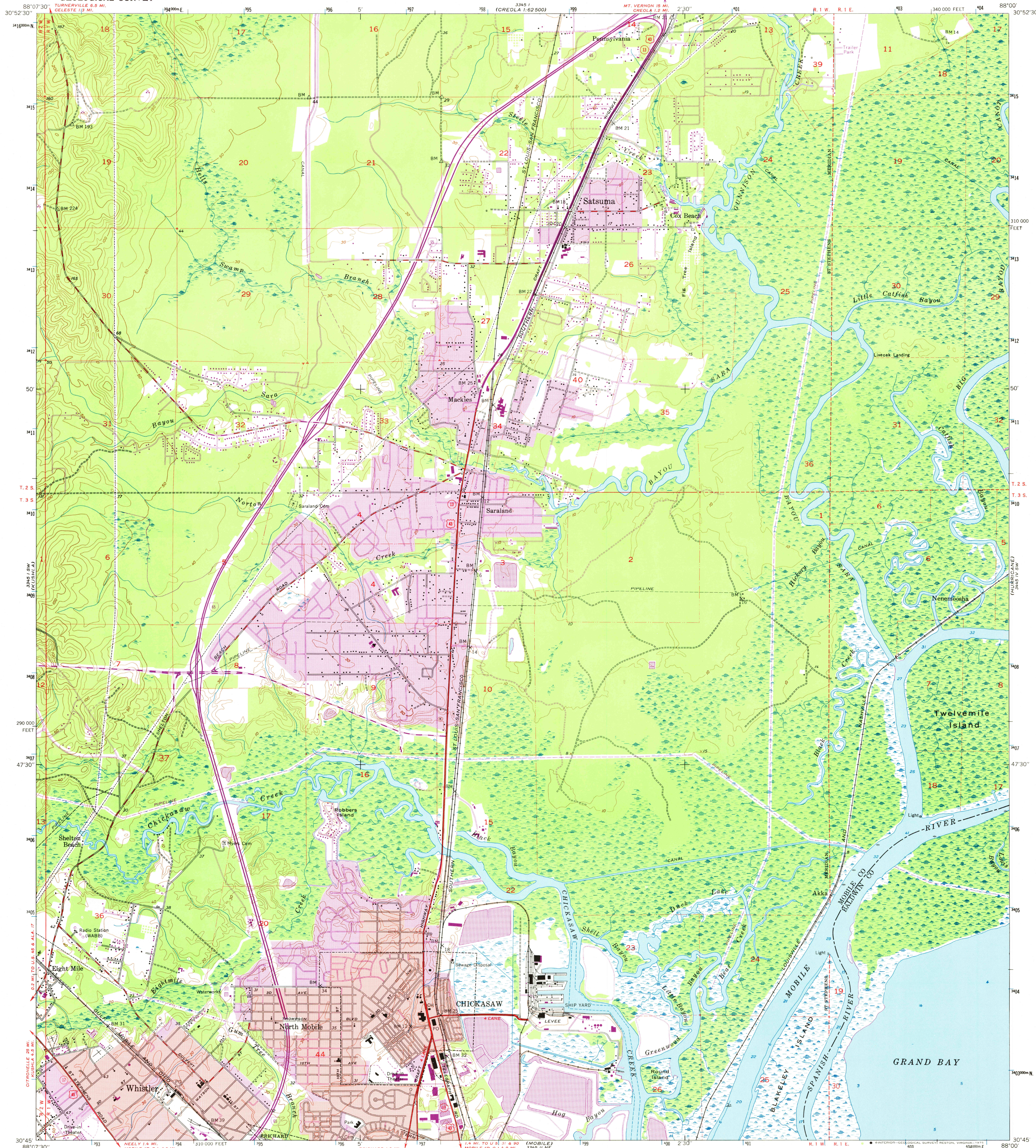


UNITED STATES
DEPARTMENT OF THE INTERIOR
GEOLOGICAL SURVEY

CHICKASAW QUADRANGLE
ALABAMA
7.5 MINUTE SERIES (TOPOGRAPHIC)
SE/4 CREOLA 15' QUADRANGLE



Mapped, edited, and published by the Geological Survey

Control by USGS, USC&GS, and Alabama Geodetic Survey

Culture and drainage in part compiled from aerial photographs

Topography by plane-table surveys 1938-1940, and in part by

Tennessee Coal, Iron and Railroad Co. Revised 1953

Hydrography compiled from USC&GS Chart 1266 (1:80,000)

Polyconic projection. 1927 North American datum

10,000-foot grid based on Alabama coordinate system,

west zone

Red tint indicates areas in which only

landmark buildings are shown

Dashed land lines indicate approximate locations

Certain land lines are omitted in T. 3 S.—R. 1 E. because of

insufficient data

1000-meter Universal Transverse Mercator grid ticks,

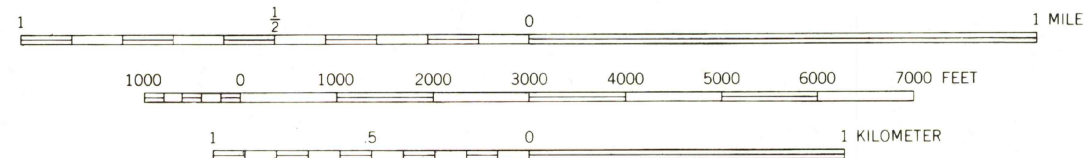
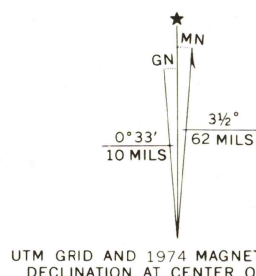
zone 16, shown in blue

Revisions shown in purple and recompilation of woodland areas

made from aerial photographs taken 1967 and 1974.

This information not field checked

Purple tint indicates extension of urban areas



CONTOUR INTERVAL 10 FEET
NATIONAL GEODETIC VERTICAL DATUM OF 1929
DEPTH CURVES AND SOUNDINGS IN FEET-DATUM IS MEAN LOW WATER
SHORELINE SHOWN REPRESENTS THE APPROXIMATE LINE OF MEAN HIGH WATER
THE MEAN RANGE OF TIDE IS APPROXIMATELY 2 FEET

THIS MAP COMPLIES WITH NATIONAL MAP ACCURACY STANDARDS
FOR SALE BY U. S. GEOLOGICAL SURVEY, RESTON, VIRGINIA 22092
A FOLDER DESCRIBING TOPOGRAPHIC MAPS AND SYMBOLS IS AVAILABLE ON REQUEST



USGS
Historical File
Topographic Division

ROAD CLASSIFICATION
Heavy-duty ——— Light-duty ———
Medium-duty ——— Unimproved dirt ———
Interstate Route ——— U.S. Route ——— State Route ———

CHICKASAW, ALA.
SE/4 CREOLA 15' QUADRANGLE
N 3045—W 8800/7.5
1953

PHOTOREVISED 1967 AND 1974
AMS 3345 1 SE—SERIES V844

APR 10 1975