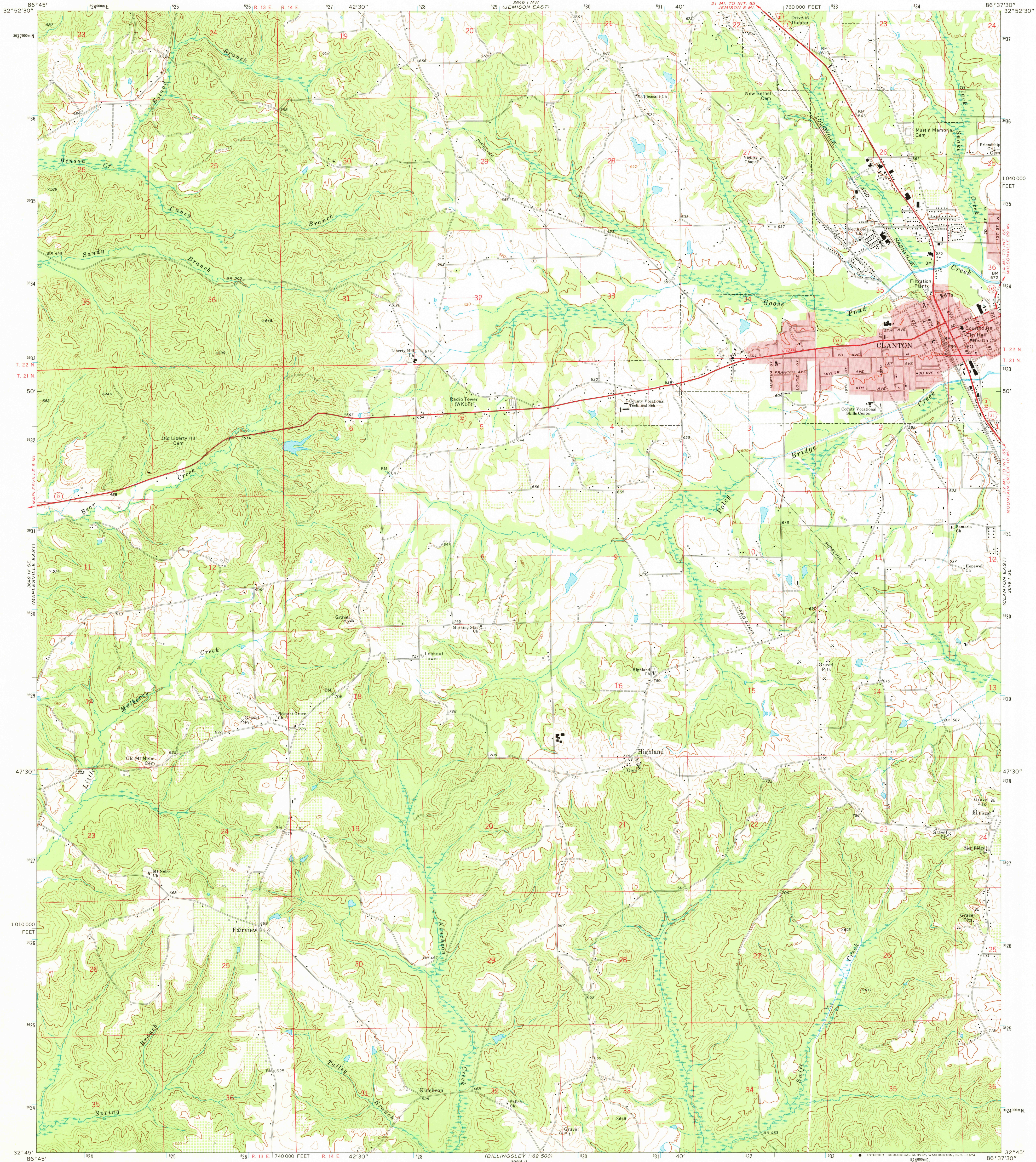
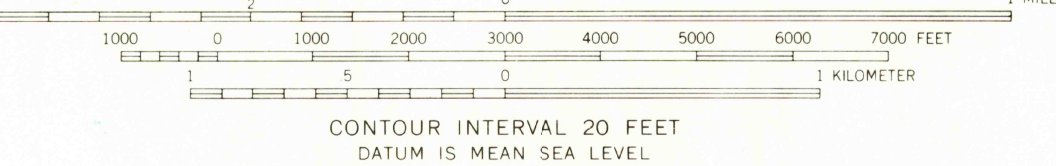
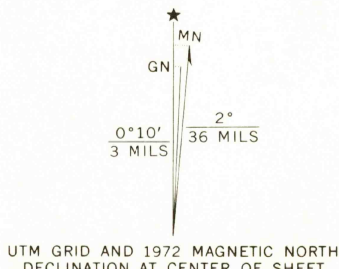


UNITED STATES
DEPARTMENT OF THE INTERIOR
GEOLOGICAL SURVEY

CLANTON WEST QUADRANGLE
ALABAMA—CHILTON CO.
7.5 MINUTE SERIES (TOPOGRAPHIC)



Mapped, edited, and published by the Geological Survey
Control by USGS, USC&GS, and Alabama Geodetic Survey
Topography by photogrammetric methods from aerial photographs
taken 1967. Field checked 1972
Projection and 10,000-foot grid ticks: Alabama coordinate
system, west zone (transverse Mercator)
1000-meter Universal Transverse Mercator grid ticks,
zone 16, shown in blue. 1927 North American datum
Fine red dashed lines indicate selected fence and field lines where
generally visible on aerial photographs. This information is unchecked
Red tint indicates areas in which only landmark buildings are shown



ROAD CLASSIFICATION	
Primary highway, hard surface	Light-duty road, hard or improved surface
Secondary highway, hard surface	Unimproved road
○ Interstate Route	○ U. S. Route
	○ State Route

USGS
Historical File
Topographic Division

CLANTON WEST, ALA.
N3245-W8637.5/7.5

1972

AMS 3649 1 SW—SERIES V844

MAR 16 1974

2970