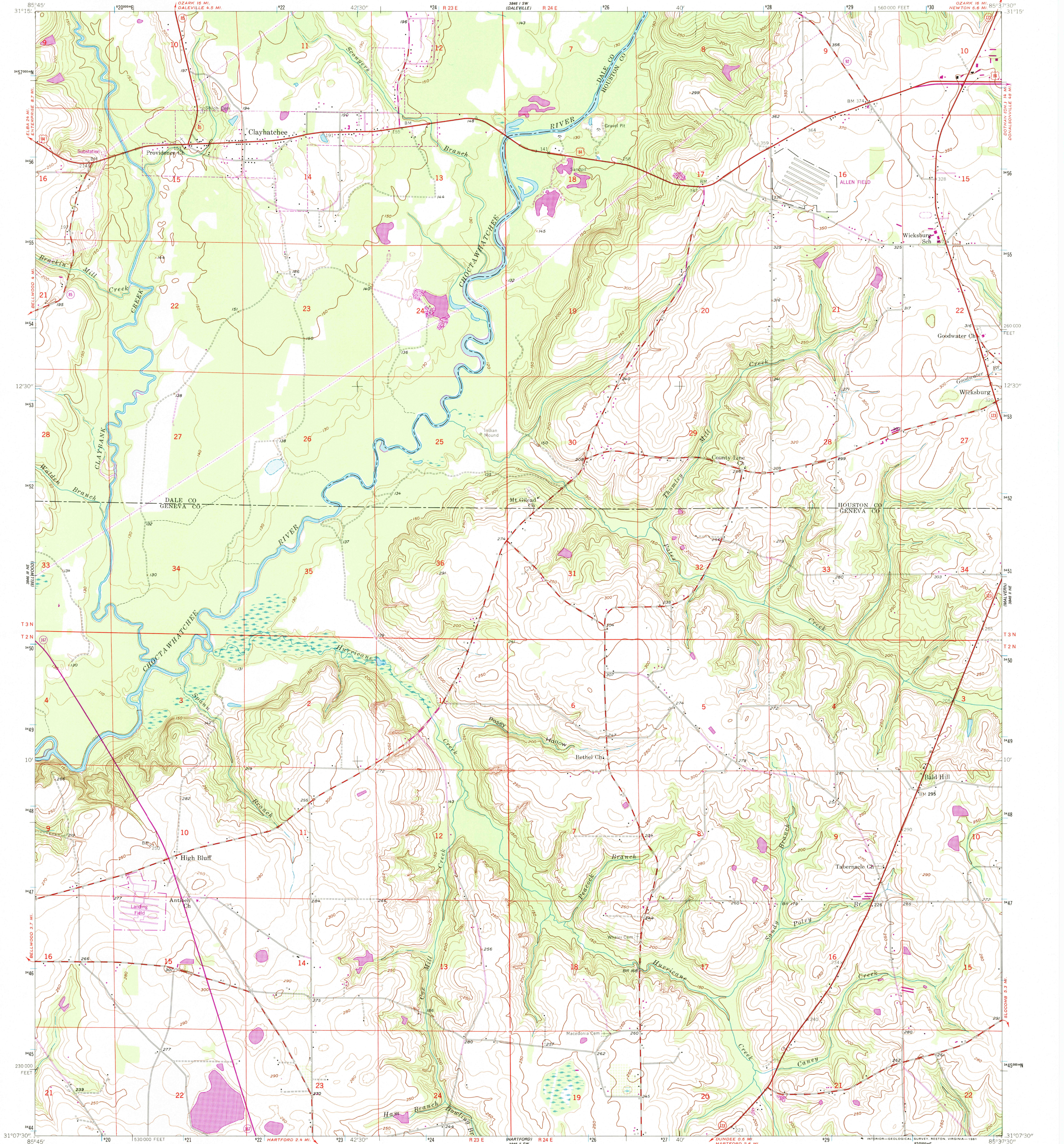
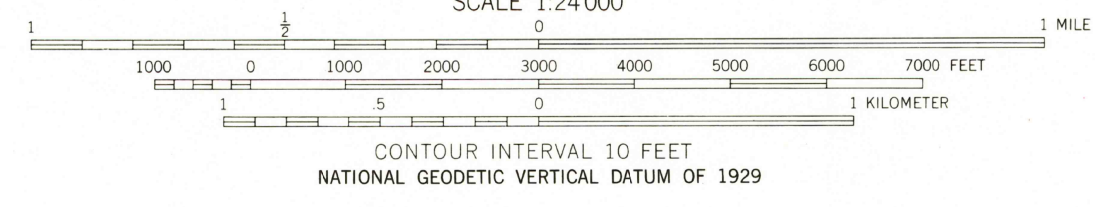
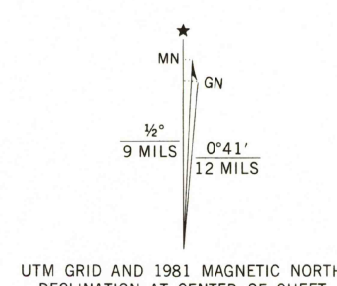


UNITED STATES
DEPARTMENT OF THE INTERIOR
GEOLOGICAL SURVEY

CLAYHATCHEE QUADRANGLE
ALABAMA
7.5 MINUTE SERIES (TOPOGRAPHIC)
NW/4 HARTFORD 15' QUADRANGLE



Mapped, edited, and published by the Geological Survey
Control by USGS and NOS/NOAA
Topography by photogrammetric methods from aerial photographs
taken 1957. Field checked 1957
Polyconic projection. 10,000-foot grid based on Alabama
coordinate system, east zone. 1000-meter Universal Transverse
Mercator grid ticks, zone 16, shown in blue. 1927 North
American Datum. To place on the predicted North American
Datum 1983 move the projection lines 15 meters south and
6 meters west as shown by dashed corner ticks
There may be private inholdings within the boundaries
of the National or State reservations shown on this map
Revisions shown in purple compiled from aerial photographs
taken 1979 and other sources. This information not
field checked Map edited 1981



ROAD CLASSIFICATION			
Heavy-duty	Light-duty	U. S. Route	State Route
Medium-duty	Unimproved dirt		



CLAYHATCHEE, ALA.
NW/4 HARTFORD 15' QUADRANGLE
N 3107.6 - W 8537.5 / 7.5
1957
PHOTOREVISED 1981
DMA 3846 II NW-SERIES V844

THIS MAP COMPLIES WITH NATIONAL MAP ACCURACY STANDARDS
FOR SALE BY U. S. GEOLOGICAL SURVEY, RESTON, VIRGINIA 22092
A FOLDER DESCRIBING TOPOGRAPHIC MAPS AND SYMBOLS IS AVAILABLE ON REQUEST

ISBN 0-607-04587-4
9 780607 045871