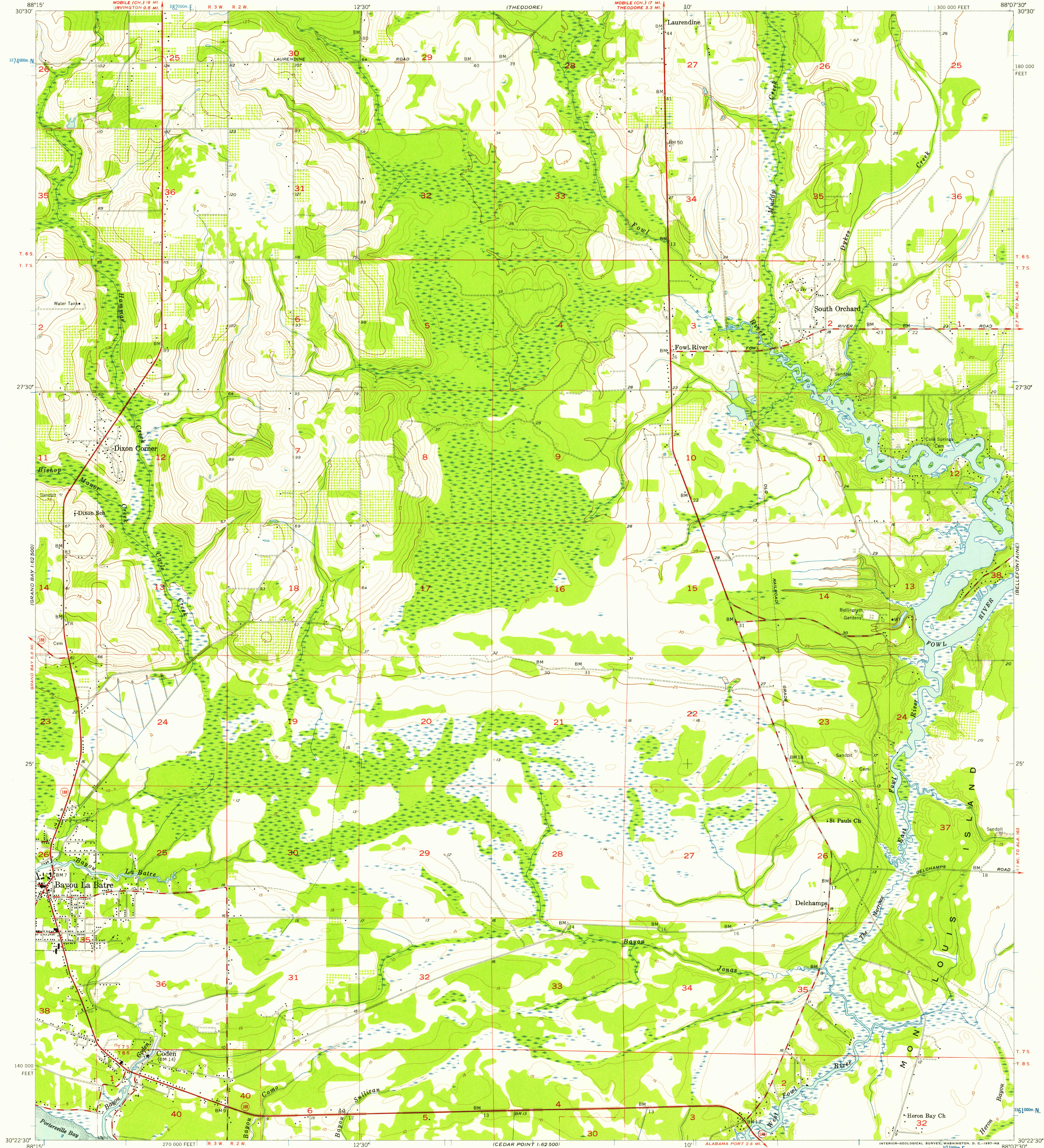


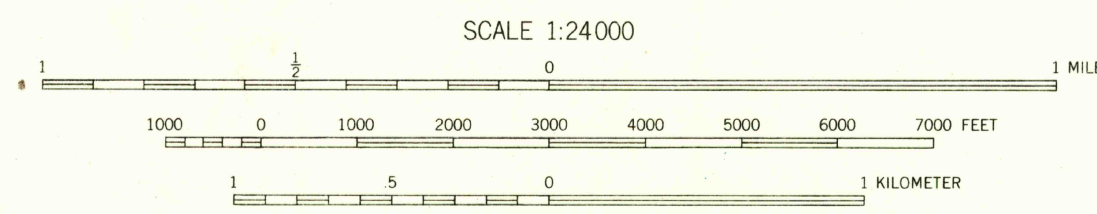
UNITED STATES
DEPARTMENT OF THE INTERIOR
GEOLOGICAL SURVEY

CODEN QUADRANGLE
ALABAMA-MOBILE CO.
7.5 MINUTE SERIES (TOPOGRAPHIC)
NW/4 CEDAR POINT 15' QUADRANGLE



Mapped, edited, and published by the Geological Survey
Control by USGS, USCGS, and Alabama Geodetic Survey
Culture and drainage in part compiled from aerial photographs
taken 1954. Topography by planetable survey 1956
Hydrography compiled from USCGS chart 874 (1952)
Polyconic projection. 1927 North American datum
10,000-foot grid based on Alabama coordinate system, west zone
1000-meter Universal Transverse Mercator grid ticks,
zone 16, shown in blue

TRUE NORTH
MAGNETIC NORTH
APPROXIMATE MEAN
DECLINATION, 1956



CONTOUR INTERVAL 5 FEET
DATUM IS MEAN SEA LEVEL
DEPTH CURVES AND SOUNDINGS IN FEET-DATUM IS MEAN LOW WATER
SHORELINE SHOWN REPRESENTS THE APPROXIMATE LINE OF MEAN HIGH WATER
THE AVERAGE RANGE OF TIDE IS APPROXIMATELY 1 FOOT

THIS MAP COMPLIES WITH NATIONAL MAP ACCURACY STANDARDS
FOR SALE BY U. S. GEOLOGICAL SURVEY, WASHINGTON 25, D. C.
A FOLDER DESCRIBING TOPOGRAPHIC MAPS AND SYMBOLS IS AVAILABLE ON REQUEST



USGS
Historical File
Topographic Division

ROAD CLASSIFICATION
Heavy-duty ——— Light-duty ———
Medium-duty ——— Unimproved dirt ———
State Route

CODEN, ALA.
NW/4 CEDAR POINT 15' QUADRANGLE
N3022.5-W8807.5/7.5

1956
HISTORICAL

JUN 12 1957
2620