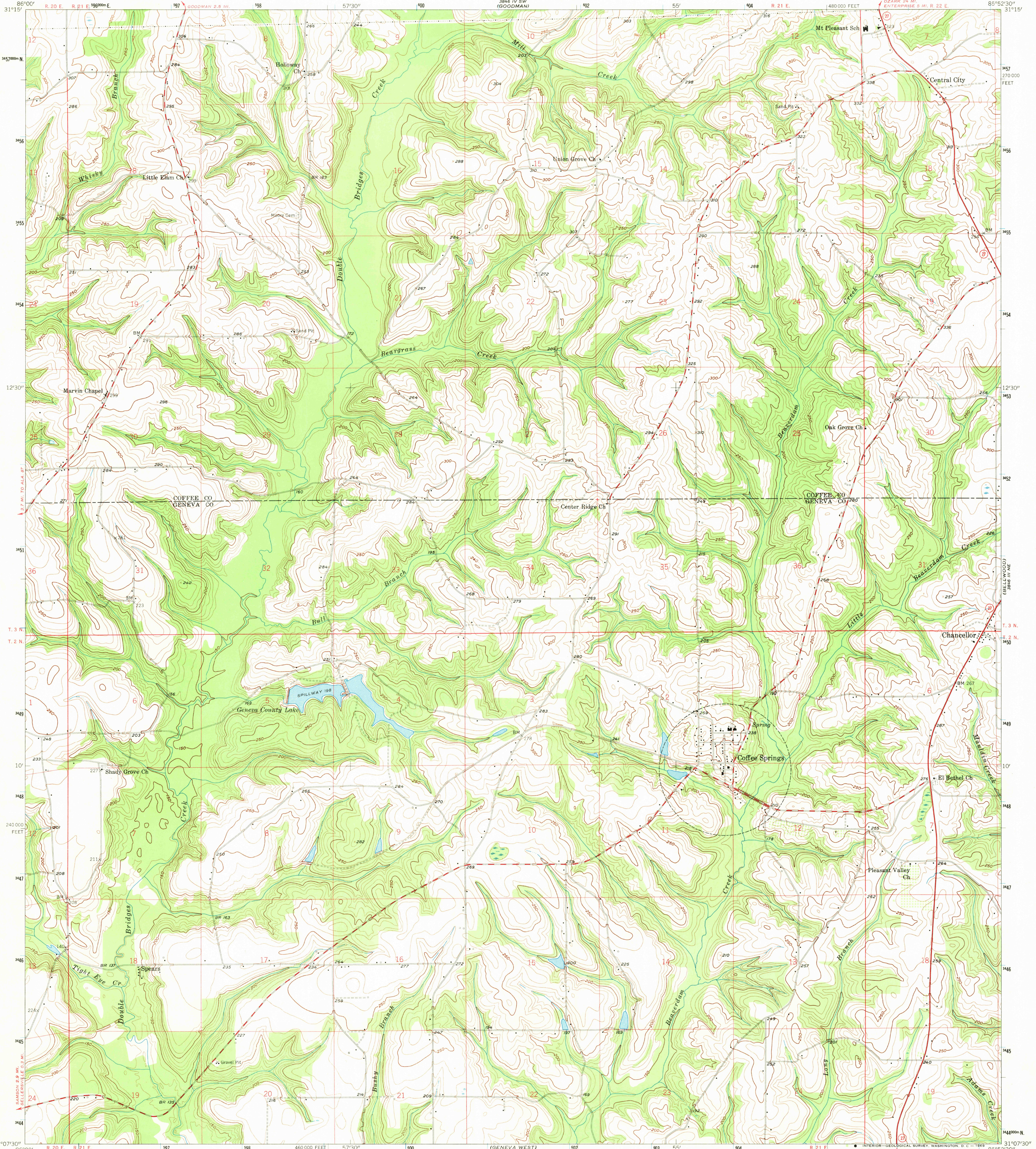
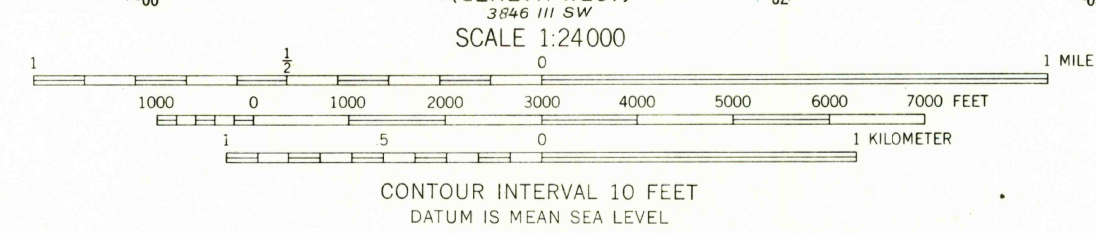


3886 1/2 SE (GENEVA 15')



Mapped, edited, and published by the Geological Survey  
Control by USGS and USC&GS  
Topography from aerial photographs by photogrammetric methods  
Aerial photographs taken 1957. Field check 1957  
Polyconic projection. 1927 North American datum  
10,000-foot grid based on Alabama coordinate system, east zone  
1000-meter Universal Transverse Mercator grid ticks,  
zone 16, shown in blue  
UTM GRID AND 1957 MAGNETIC NORTH DECLINATION AT CENTER OF SHEET



USGS  
Historical File Topographic Division

ROAD CLASSIFICATION  
Heavy-duty Light-duty  
Medium-duty Unimproved dirt  
State Route

U.S.G.S.  
COFFEE SPRINGS, ALA.  
NW/4 GENEVA 15' QUADRANGLE  
N 3107.5 - W 8552.5 / 7.5  
1957  
AMS 3846 III NW - SERIES V844

RETURN TO:  
MND HISTORICAL MAP ARCHIVES  
USGS NATIONAL CENTER, MS-522  
RESTON, VA 22092

2840  
MAY 6 1958

3886 1/2 SE (GENEVA 15')