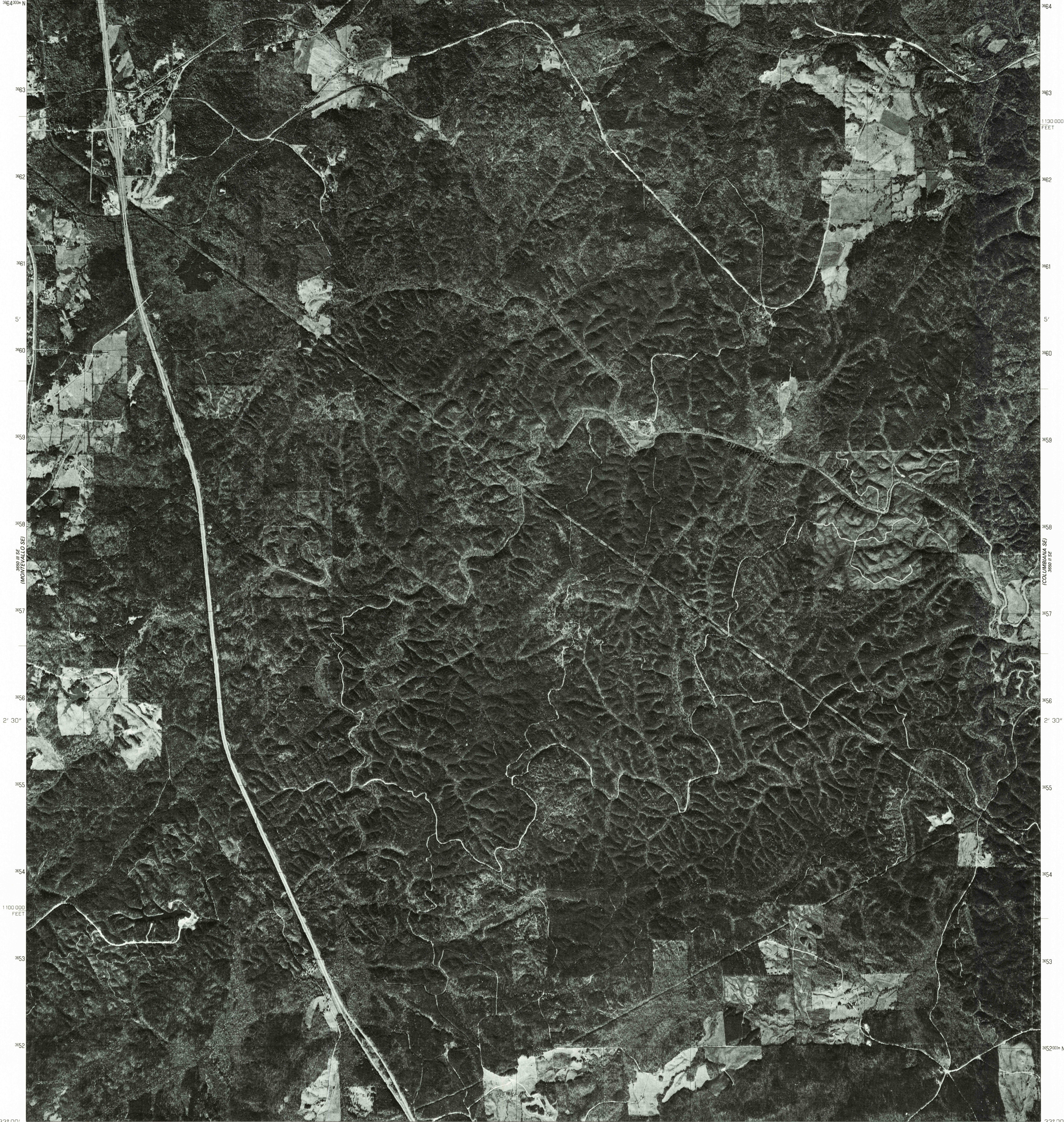
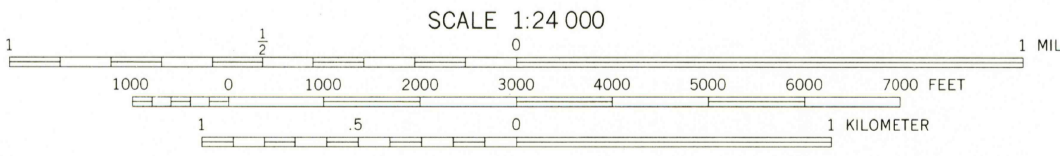
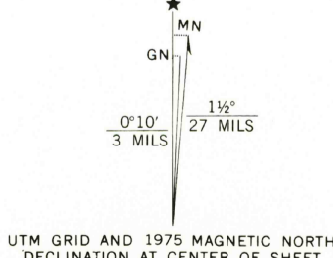


86° 45' 33" 07' 30" 33° 07' 30" 124000m E 125 126 127 42' 30" 128 3650 II NW (COLUMBIANA NW) 130 40' 132 76000 FEET 133 134 86° 37' 30" 33° 07' 30"



Produced by the Geological Survey
in cooperation with the Soil Conservation Service
Orthophotograph prepared from 1:80,000-scale
aerial photograph taken December 1, 1975
Projection and 10,000-foot grid ticks: Alabama coordinate
system, west zone (transverse Mercator)
1000-meter Universal Transverse Mercator grid,
zone 16. 1927 North American datum
Photoimagery rectified by optical scanning



PRINCIPAL NUMBERED HIGHWAYS
○ Interstate Route ○ U. S. Route ○ State Route



This quadrangle area also covered by SW quarter
of Columbian 1:62,500-scale topographic map

THIS MAP COMPLIES WITH NATIONAL MAP ACCURACY STANDARDS
FOR SALE BY U. S. GEOLOGICAL SURVEY, RESTON, VIRGINIA 22092

USGS
Historical File
Topographic Division

COLUMBIANA SW, ALA. #6
N3300-W8637.5/7.5
1975
FEB 08 1978