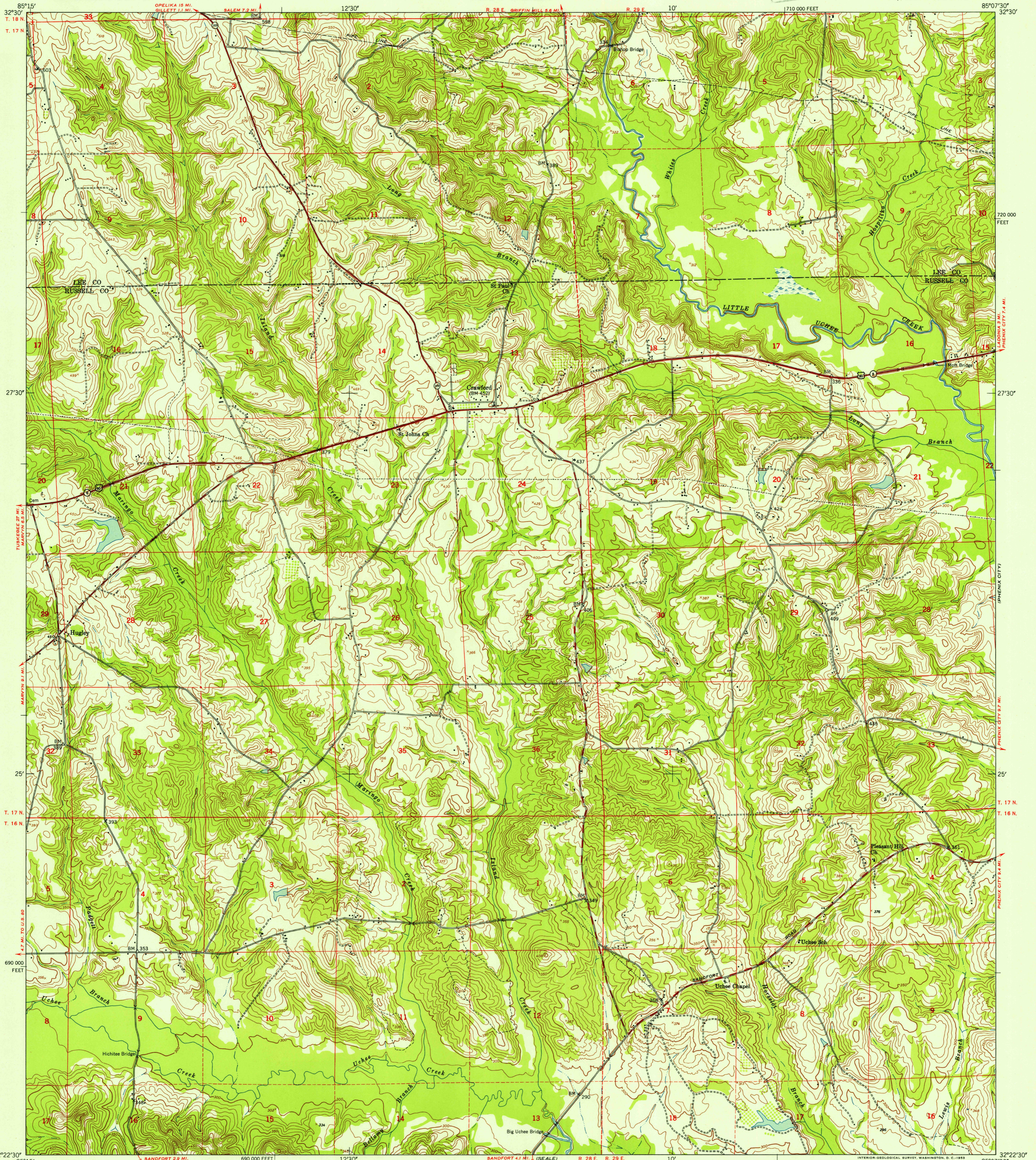
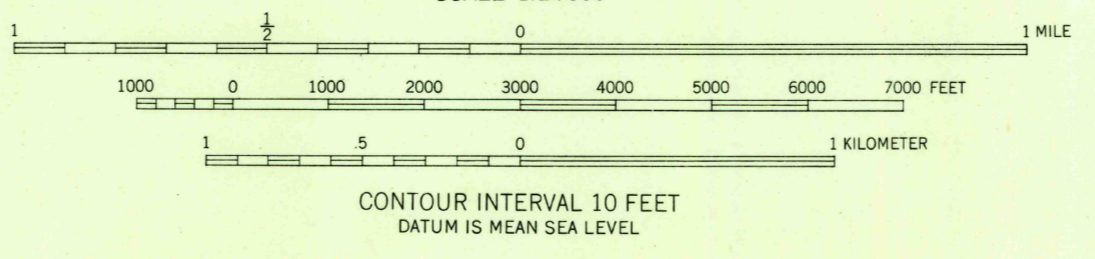


FILE COPY
Inspection and Editing



Mapped by the Army Map Service
Published for civil use by the Geological Survey
Control by USGS, USC&GS, USCE, and Georgia
Geodetic Survey
Topography from aerial photographs by multiplex methods
Aerial photographs taken 1947 and 1950. Field check 1950
Polyconic projection. 1927 North American datum
10,000-foot grid based on Alabama coordinate system,
east zone
Dashed land lines indicate approximate locations
Unchecked elevations are shown in brown

215°
TRUE NORTH
MAGNETIC NORTH
APPROXIMATE MEAN
DECLINATION, 1950



ROAD CLASSIFICATION
Heavy-duty 4 LANE 16 LANE Light-duty
Medium-duty 4 LANE 16 LANE Unimproved dirt
U. S. Route State Route

CRAWFORD, ALA.
NW/4 SCALE 15' QUADRANGLE
N3222.5-W8507.5/7.5
USGS 1950
Historical File
Topographic Division

FILE COPY
Inspection and Editing

THIS MAP COMPLIES WITH NATIONAL MAP ACCURACY STANDARDS
FOR SALE BY U. S. GEOLOGICAL SURVEY, WASHINGTON 25, D. C.
A FOLDER DESCRIBING TOPOGRAPHIC MAPS AND SYMBOLS IS AVAILABLE ON REQUEST

JAN 6 1954

2620