

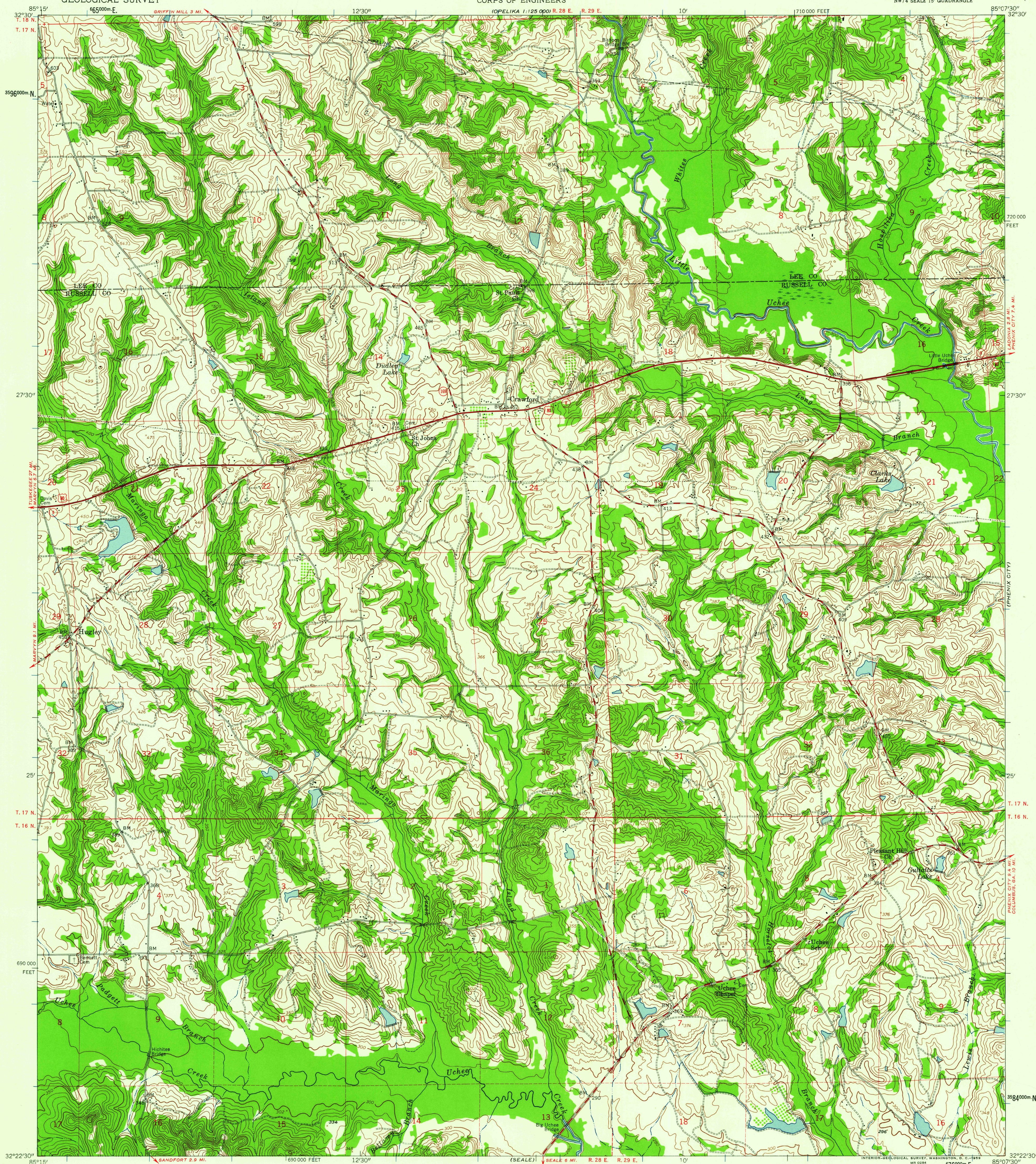
OPELIKA
1:125000

UNITED STATES
DEPARTMENT OF THE INTERIOR
GEOLOGICAL SURVEY

UNITED STATES
DEPARTMENT OF THE ARMY
CORPS OF ENGINEERS

CRAWFORD QUADRANGLE
ALABAMA
7.5 MINUTE SERIES (TOPOGRAPHIC)
NW 1/4 SCALE 15' QUADRANGLE

OPELIKA
1:125000



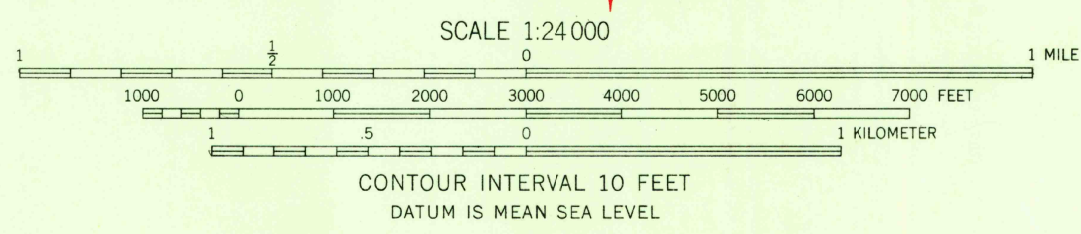
Mapped by the Army Map Service
Published for civil use by the Geological Survey

Control by USGS, USC&GS, USCE, and Georgia
Geodetic Survey

Topography from aerial photographs by photogrammetric methods
Aerial photographs taken 1947 and 1950. Culture and drainage
revised from aerial photographs taken 1953. Field check 1955

Polyconic projection. 1927 North American datum
10,000-foot grid based on Alabama coordinate system,
east zone
1000-meter Universal Transverse Mercator grid ticks,
zone 16, shown in blue
Dashed land lines indicate approximate locations
Unchecked elevations are shown in brown

TRUE NORTH
MAGNETIC NORTH
APPROXIMATE MEAN
DECLINATION, 1955



THIS MAP COMPLIES WITH NATIONAL MAP ACCURACY STANDARDS
FOR SALE BY U. S. GEOLOGICAL SURVEY, WASHINGTON 25, D. C.
A FOLDER DESCRIBING TOPOGRAPHIC MAPS AND SYMBOLS IS AVAILABLE ON REQUEST

ALABAMA
QUADRANGLE LOCATION
USGS
Historical File
Topographic Division

ROAD CLASSIFICATION
Heavy-duty ——— Light-duty ———
Medium-duty ——— Unimproved dirt ———
U. S. Route ——— State Route ———

U.S.G.S.
FILE COPY
TOPOGRAPHIC DIVISION

CRAWFORD, ALA.
NW 1/4 SCALE 15' QUADRANGLE
N 3222.5-W 8507.5/7.5
1955

HISTORICAL

SEP 21 1959

2555