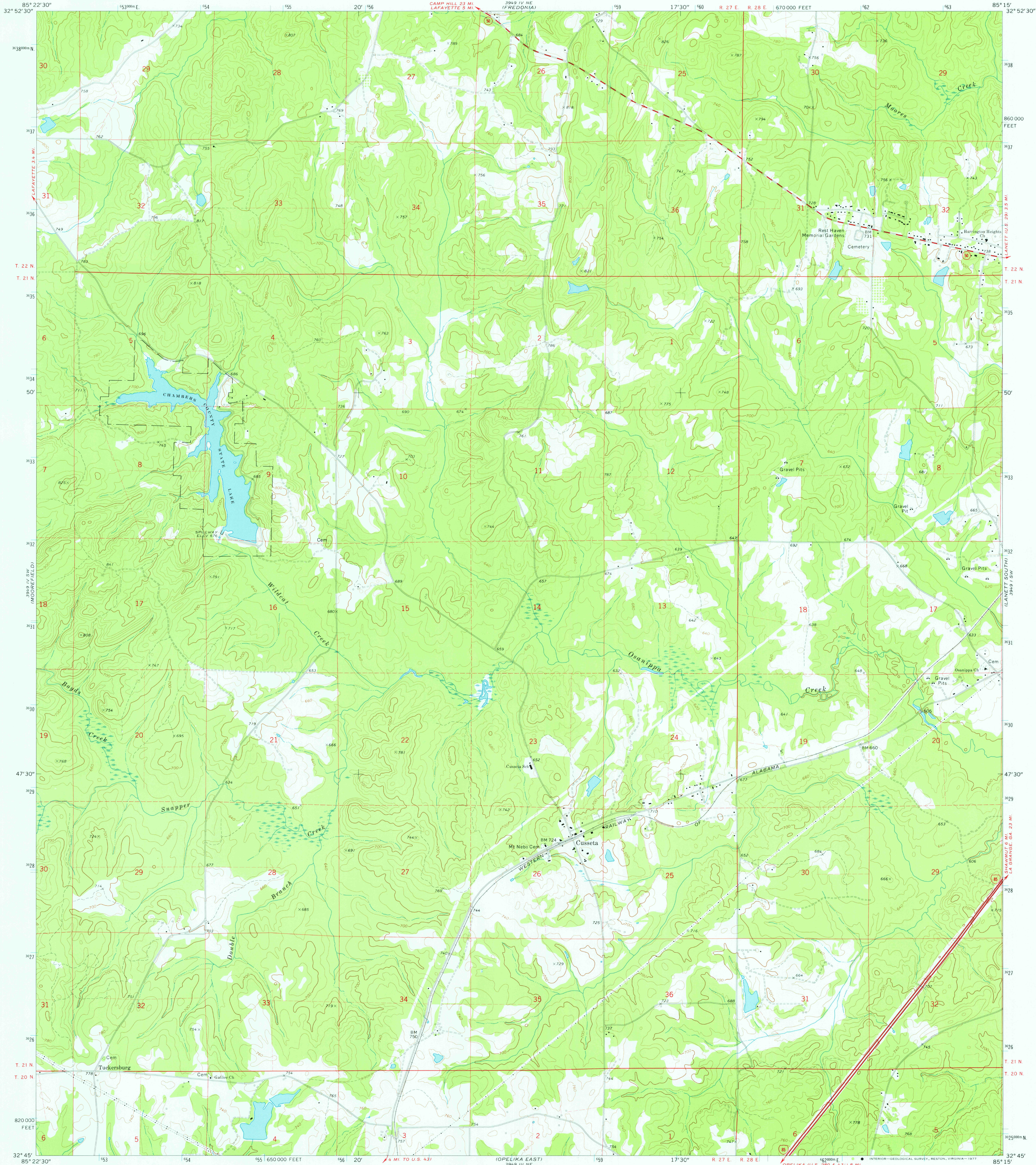
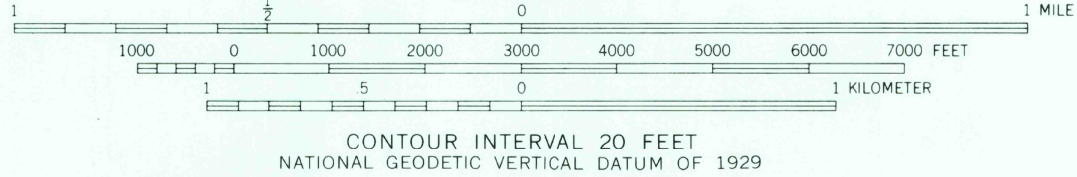
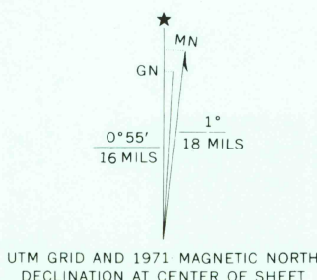


UNITED STATES  
DEPARTMENT OF THE INTERIOR  
GEOLOGICAL SURVEY

CUSSETA QUADRANGLE  
ALABAMA—CHAMBERS CO.  
7.5 MINUTE SERIES (TOPOGRAPHIC)



Mapped, edited, and published by the Geological Survey  
Control by USGS and USCGS  
Topography by photogrammetric methods from aerial  
photographs taken 1969. Field checked 1971  
Polyconic projection. 1927 North American datum  
10,000-foot grid based on Alabama coordinate system, east zone  
1000-meter Universal Transverse Mercator grid ticks,  
zone 16, shown in blue  
Fine red dashed lines indicate selected fence and field lines where  
generally visible on aerial photographs. This information is unchecked



ROAD CLASSIFICATION  
Primary highway, hard surface  
Secondary highway, hard surface  
Light-duty road, hard or improved surface  
Unimproved road  
Interstate Route  
U. S. Route  
State Route

USGS  
Historical File  
Topographic Division

CUSSETA, ALA.  
N3245-W8515/7.5  
1971

AMS 3949 IV SE—SERIES V844

THIS MAP COMPLIES WITH NATIONAL MAP ACCURACY STANDARDS  
FOR SALE BY U. S. GEOLOGICAL SURVEY, RESTON, VIRGINIA 22092  
A FOLDER DESCRIBING TOPOGRAPHIC MAPS AND SYMBOLS IS AVAILABLE ON REQUEST

8200  
MAR 15 1977