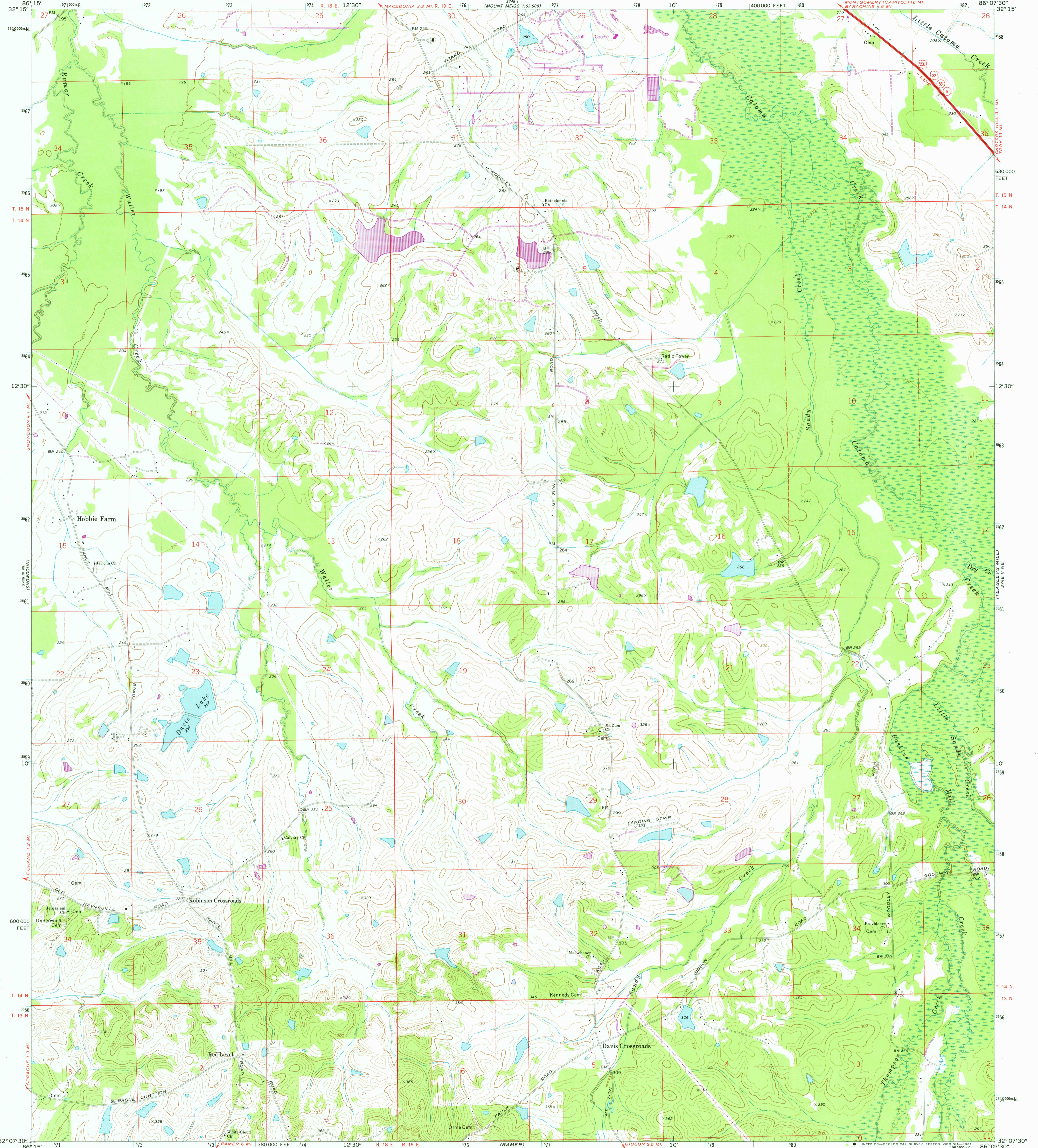


3748 1000 SE
ADDITIONAL
SHEET(S)

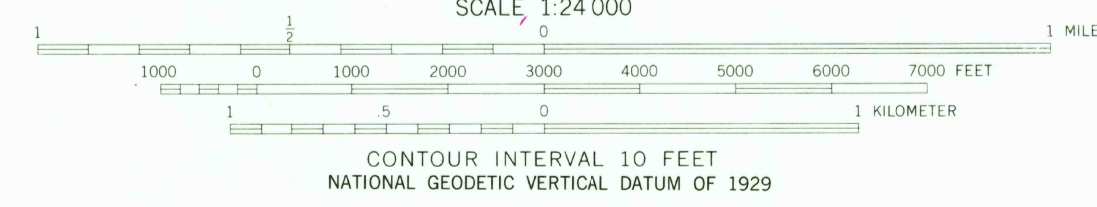
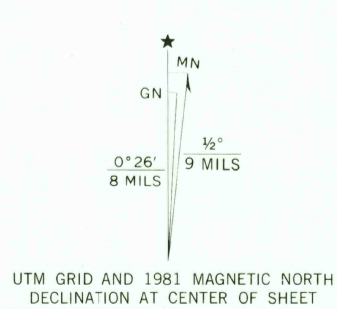
UNITED STATES
DEPARTMENT OF THE INTERIOR
GEOLOGICAL SURVEY

DAVIS CROSSROADS QUADRANGLE
ALABAMA—MONTGOMERY CO.
7.5 MINUTE SERIES (TOPOGRAPHIC)

3748 1000 SE
ADDITIONAL
SHEET(S)



Mapped, edited, and published by the Geological Survey
Control by USGS, NOS/NOAA, and Alabama Geodetic Survey
Topography by photogrammetric methods from aerial
photographs taken 1971. Field checked 1971
Projection and 10,000-foot grid ticks: Alabama coordinate
system, east zone (transverse Mercator)
1000-meter Universal Transverse Mercator grid ticks,
zone 16, shown in blue. 1927 North American Datum
To place on the predicted North American Datum 1983
move the projection lines 13 meters south and 4 meters
west as shown by dashed corner ticks
Fine red dashed lines indicate selected fence and field lines where
generally visible on aerial photographs. This information is unchecked
Revisions shown in purple and woodland compiled from
aerial photographs taken 1979 and other sources
This information not field checked. Map edited 1981



THIS MAP COMPLIES WITH NATIONAL MAP ACCURACY STANDARDS
FOR SALE BY U. S. GEOLOGICAL SURVEY, RESTON, VIRGINIA 22092
A FOLDER DESCRIBING TOPOGRAPHIC MAPS AND SYMBOLS IS AVAILABLE ON REQUEST

ROAD CLASSIFICATION

Primary highway, hard surface	Light-duty road, hard or improved surface
Secondary highway, hard surface	Unimproved road
Interstate Route	U. S. Route
	State Route

DAVIS CROSSROADS, ALA.
N3207.5-W8607.5/7.5

RETURN TO:
USGS HISTORICAL MAP ARCHIVES
NATIONAL CENTER, MS-522
RESTON, VA 22092

1971
PHOTOREVISED 1981
DMA 3748 II NW—SERIES V844

2350