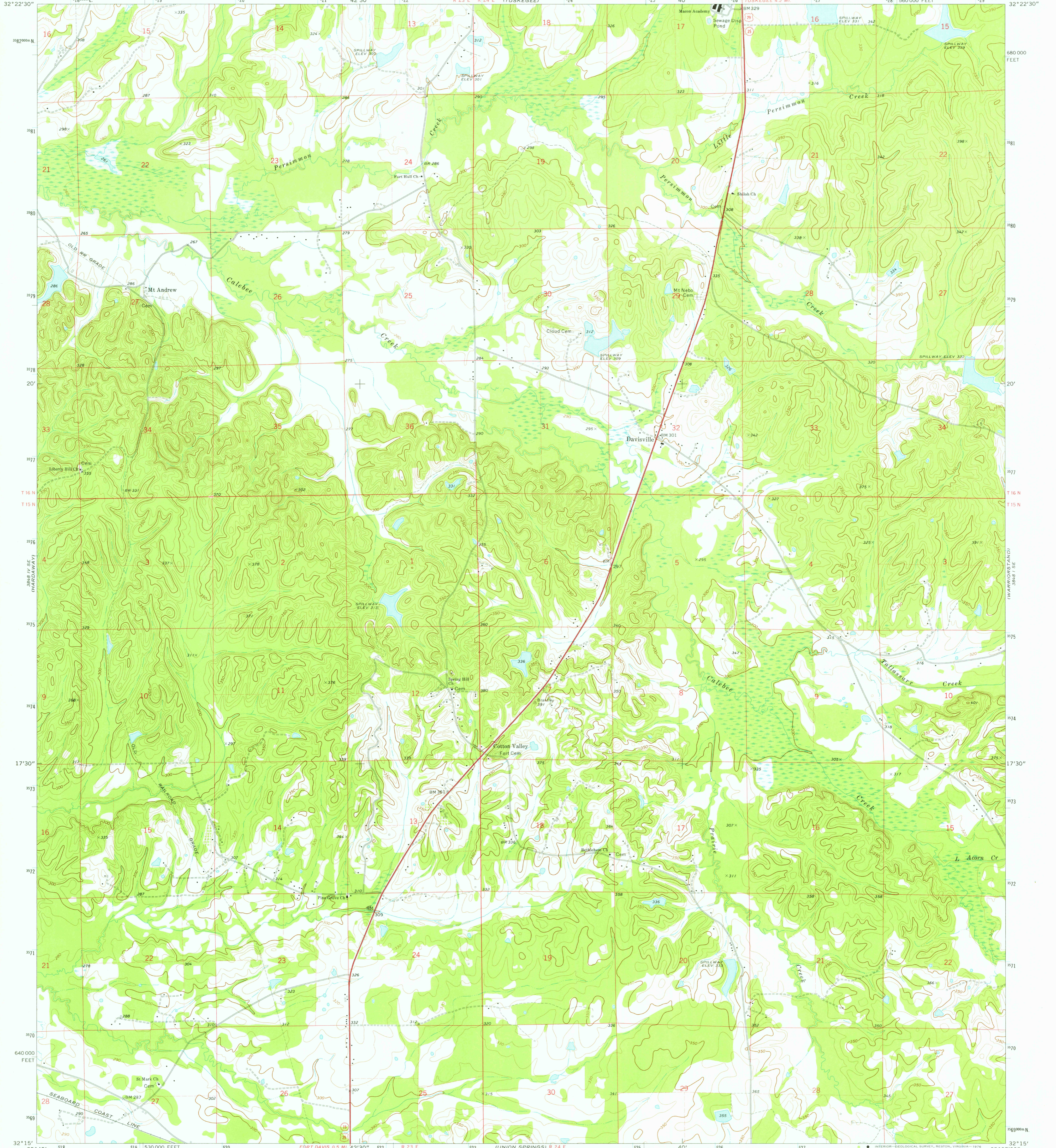


3848 IV NE  
(A PLACE)

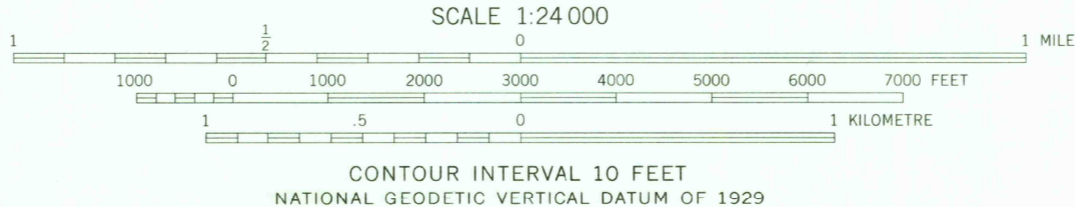
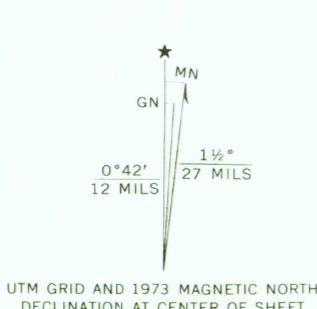
UNITED STATES  
DEPARTMENT OF THE INTERIOR  
GEOLOGICAL SURVEY

DAVISVILLE QUADRANGLE  
ALABAMA—MACON CO.  
7.5 MINUTE SERIES (TOPOGRAPHIC)

3848 I NE  
LITTLE TEXAS



Mapped, edited, and published by the Geological Survey  
Control by USGS, NOS/NOAA, and Alabama Geodetic Survey  
Topography by photogrammetric methods from aerial  
photographs taken 1972. Field checked 1973  
Projection and 10,000-foot grid ticks: Alabama coordinate  
system, east zone (transverse Mercator)  
1000-metre Universal Transverse Mercator grid ticks,  
zone 16, shown in blue. 1927 North American datum  
Fine red dashed lines indicate selected fence and field lines where  
generally visible on aerial photographs. This information is unchecked



ROAD CLASSIFICATION

Primary highway, hard surface	Light-duty road, hard or improved surface
Secondary highway, hard surface	Unimproved road
Interstate Route	U. S. Route
	State Route

MAR 30 1976

THIS MAP COMPLIES WITH NATIONAL MAP ACCURACY STANDARDS  
FOR SALE BY U. S. GEOLOGICAL SURVEY, RESTON, VIRGINIA 22092  
A FOLDER DESCRIBING TOPOGRAPHIC MAPS AND SYMBOLS IS AVAILABLE ON REQUEST

USGS  
Historical File  
Topographic Division

DAVISVILLE, ALA.  
N3215—W8537.5/7.5

1973

AMS 3848 I SW—SERIES V844